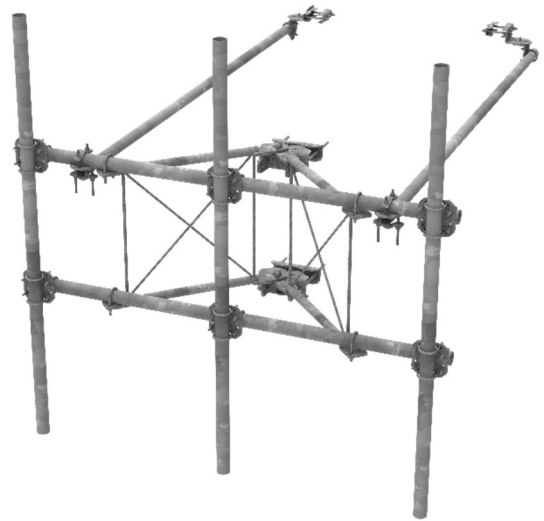


GENERAL SPECIFICATIONS

- Adjustable Taper up to 6 degrees
- Rotating Frame up to 60 degrees of azimuth adjustment
- Includes: Frame | Pipe Mounts | (2) Stiff arm | Tower attachment| Crossover Plate/w double U-bolts
- Tower Taper: Non-tapered | Tapered
- Material Type: Hot Dip Galvanized Steel



MECHANICAL SPECIFICATIONS

Strut Azimuth Adjustment	± 25°
Strut Elevation Adjustment	± 15°
Pipe Diameter - Horizontal	73 mm 2.875 in.
Antenna Pipe Diameter	73 mm 2.875 in
Face Width	8'0"
Stand-Off Distance	35"

Structural Members		
	ASTM Designation	Yield Strength
Square/Rectangle HSS Tube	A500	46 ksi
Channel	A529	50 Ksi
Angle	A529	50 Ksi
Pipe	A500	46 ksi
Steel Plate – 11 to 14 GAUGE	A1011	33 ksi
Steel Plate – 3/16" ≥ T ≥ 1/2"	A1011/A1018	36 ksi
Steel Plate – T ≥ 5/8"	A572	50 ksi

T – Thickness of material

MTC3975HD083 CONFIGURATION

PART NO.	DESCRIPTION	WEIGHT (LBS.)
MTC3975HD083	SINGLE SECTOR FRAME KIT 8'0" FACE W/3 ANT PIPES	460

MOUNT EFFECTIVE PROJECTED AREA (EPA)

Mount Model	Mount EPA w/No Ice (ft. ²)		Mount EPA w/1/2" Ice (ft. ²)	
	Front (EPA) _N	Side (EPA) _T	Front (EPA) _N	Side (EPA) _T
MTC3975HD083	10.6	8.1	16.4	12.6

Notes:

1. Tiebacks are assumed rotated 25 degrees from normal.
2. Mount pipes considered.
3. Mount connection members to tower (ring mounts and other brackets considered).