

- 1.0 GENERAL NOTES
- 1.1 ALL METRIC DIMENSIONS ARE IN BRACKETS
- 1.2 FOR PATENT INFO :<https://www.cs-pat.com>

- 2.0 DESIGN NOTES
- 2.1 ANY HAZARDS OR OBSTRUCTIONS TO THE CLIMBING FACILITY AND SAFETY CLIMB MUST BE IDENTIFIED PRIOR TO INSTALLING THE APPURTENANCE. ADDITIONAL PRODUCTS MAY BE REQUIRED TO MAINTAIN THE INTEGRITY OF THE SAFETY CLIMB. DURING INSTALLATION, TEMPORARY AND/OR PERMANENT PRECAUTIONARY MEASURES SHOULD BE TAKEN TO PRESERVE THE CLIMBING FACILITY AND/OR SAFETY CLIMB.

- 2.2 UP TO 5.7° TAPER AVAILABLE ON MODELS THAT SUPPORT ADJUSTMENT

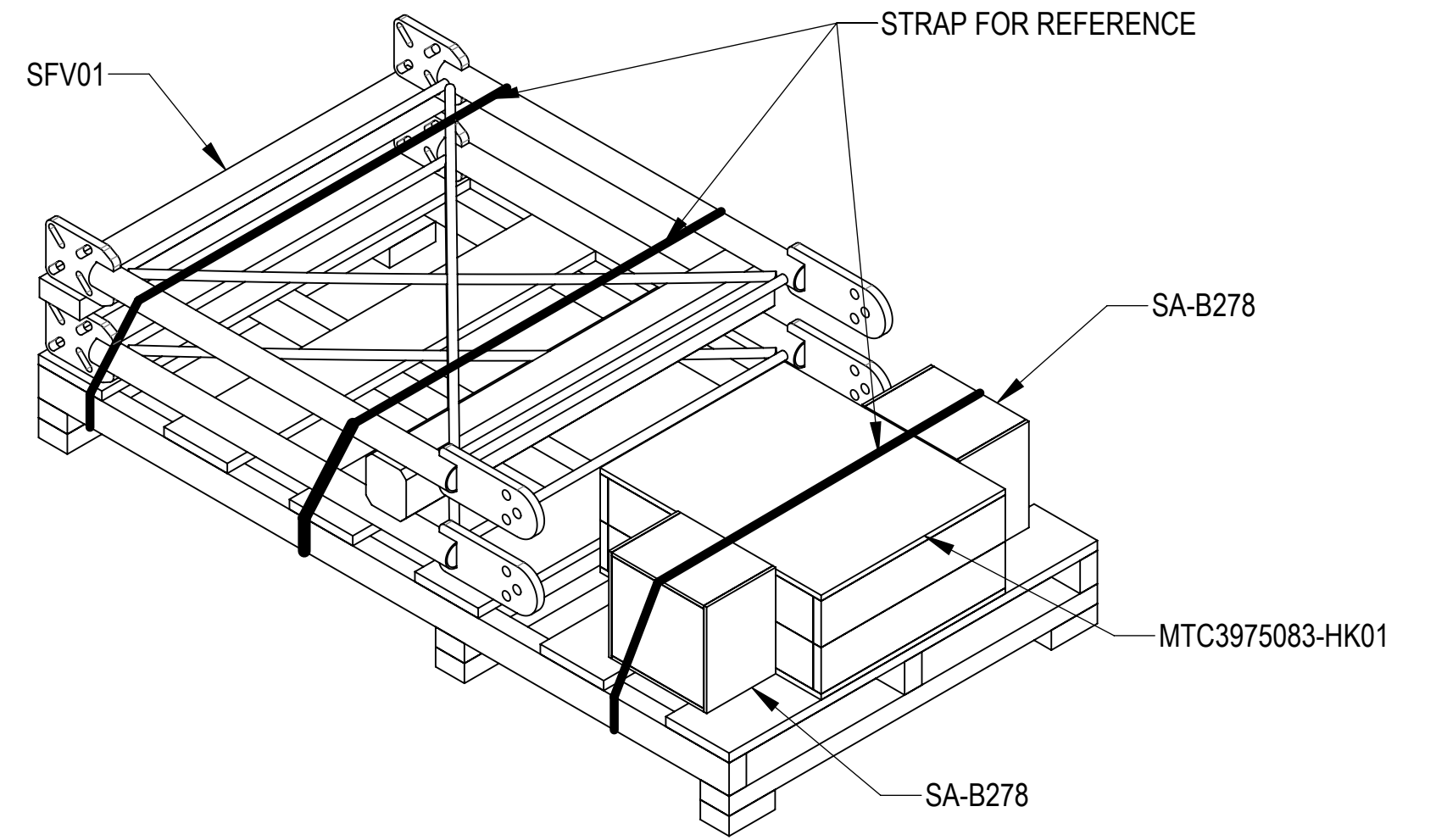
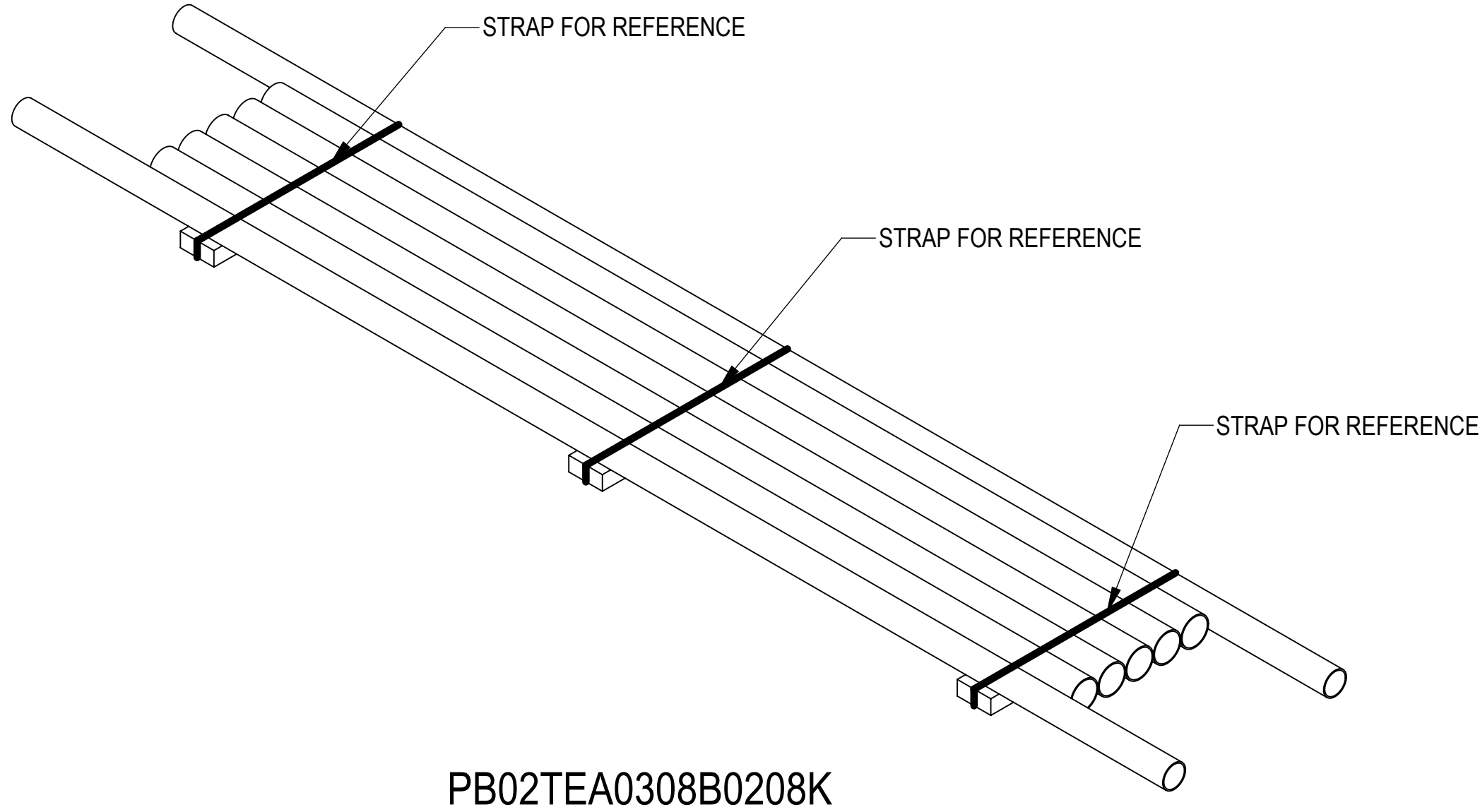
- 3.0 MANUFACTURING/SPECIAL REQUIREMENTS
- 3.1 TIGHTEN ALL BOLTS SECURING FLAT PLATES BY THE TURN-OF-NUT METHOD. TIGHTEN ALL U-BOLTS USING TURN-OF-NUT METHOD WITH ATTENTION TO LEAVE EQUAL DISTANCE AND EQUAL FORCE ON EACH LEG OF THE U-BOLT.

4.0 TEST

5.0 PACKAGING

- 5.1 PACKAGING SHALL MEET COMMScope REQUIREMENTS PER DOCUMENT IS-PL-3005
- 5.2 PRINTED DOCUMENT TO BE PLACED INSIDE POLYBAG AND THEN IN SHIPPING CONTAINER
- 5.3 EXTRA HARDWARE MAY BE SUPPLIED, BAGGED AND SHIPPED.

REVISIONS			
REV.	DESCRIPTION	DATE	APPROVED
B	UPDATED PALLET 60X32 WAS 48X32 AND WOOD CRATE CR171407 WAS CR2080A	MS1288 27AUG21	BCROSS 14462PC
C	DELETED NOTE 2.1; UPDATED NOTE 3.1; UPDATED MODEL; ADDED NOTES FOR TOWER LEG IN SHEET 3	YX1027 10FEB22	BCROSS 40143064CMO
D	UPDATED DRAWING TO MATCH LATEST NOTE	JYANG4 27JUL22	BCROSS 40153133CMO
E	ADDED SHEET 2 AND NOTE 2.1; ADDED ITEM 26 TO THE TOP OF V-ARM	RY1002 29AUG23	YW1045 40177837CMO
F	SHEET2: ADDED SFG2150 TO TABLE 1; SHEET5: ADDED LABEL INSTALLATION NOTICE	JL1183 17NOV23	YW1045 40183325CMO
G	UPDATED EPA TABLE	YMENG 12DEC24	CB1094 40210882CMO



<b>COMMScope, INC. OF NORTH CAROLINA</b>										
TOLERANCES					SAP MATERIAL MASTER					
0 PLACE .X[X] ± 0.2[6.3]		2 PLACE .XX[X] ± 0.06[1.5]			<b>MTC3975HD083</b>					
1 PLACE .X[X] ± 0.12[3.0]		ANGLES ± 2°								
FINISH					MATERIAL					
UNLESS OTHERWISE SPECIFIED DIMENSIONS ARE IN INCHES INTERPRET PER ANSI Y 14.5M-1994	NAME	DATE	TITLE							
	CE XZ1054	03/02/2021	<b>SECTOR FR, HD,TW, SFG21, 8FT, 3 ANT PIPE</b>							
	RW YMENG	12/16/2024								
	AD CB1094	12/17/2024								
	RE YMENG	12/17/2024								
ECN 40210882CMO										
SCALE	DOCUMENT NO.		<b>MTC3975HD083</b>							
1:10										
SIZE	Auth Group	INSL	MODEL			DRAWING				SHEET
<b>C</b>			VERSION	STATUS	REVISION	VERSION	STATUS	REVISION	1 OF 8	
			04	RE	E	06	RE	G		

DENSITY		lbs/in <sup>3</sup>
MASS	471.01	lbs
VOLUME	1662.73	in <sup>3</sup>
SURFACE AREA	18610.49	in <sup>2</sup>
HEIGHT	96"	
LENGTH	118"	
WIDTH	96"	

4

3

2

1

# PART NUMBERS, WEIGHTS, & EPA

### TABLE 1: CONFIGURATIONS

PART NUMBER	DESCRIPTION	WEIGHT (LBS)	MOUNT EPA W/NO ICE (FT²)			MOUNT EPA W/ 1/2" ICE (FT²)			ANTENNA PIPES	INCLUDED PARTS		
			FRONT (EPA)N	SIDE (EPA)T	3-SECTORS (EPA)A	FRONT (EPA)N	SIDE (EPA)T	3-SECTORS (EPA)A		MTC3975HD083-PK01	PB02TEA0308B0208K	SFG2150
MTC3975HD083	SECTOR FRAME,HD,TW,SFG21,8FT,3 ANT PIPE	471.0	5.69	4.55	12.28	8.63	7.86	19.79	3	1	1	1

#### NOTES:

1. NO MOUNT PIPES CONSIDERED. IF DESIRED, ADD ANTENNA PIPE PER TABLE 2
2. MOUNT CONNECTION MEMBERS TO TOWER CONSIDERED.
3. 3-SECTOR EPA INCLUDES KA FACTORS.

### TABLE 2: EPA OF EACH ANTENNA PIPE

ANTENNA PIPE	MOUNT EPA W/NO ICE (FT²)			MOUNT EPA W/ 1/2" ICE (FT²)		
	FRONT (EPA)N	SIDE (EPA)T	3-SECTORS (EPA)A	FRONT (EPA)N	SIDE (EPA)T	3-SECTORS (EPA)A
2-7/8" X 96"	2.07	2.07	1.84	2.79	2.79	2.48

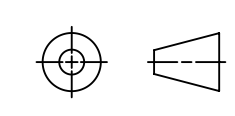
#### NOTE:

1. ANTENNA PIPES ARE CONSIDERED SEPARATELY.
2. KA FACTOR OF 3-SECTOR EPA INCLUDED.
3. COMBINE THE ASSOCIATED EPA VALUES IN THE TABLES ABOVE TO DETERMINE THE EPA OF A MOUNT MODEL WITH A LISTED MOUNT PIPE CONFIGURATION.  
FOR EXAMPLE: MTC3975HD083 HAS A FRONT EPA OF 5.69 FT² WITH NO ICE PLUS 3 ANTENNA PIPES WITH A FRONT EPA OF 3X2.07=6.21 FT² WITH NO ICE. SO, THE TOTAL FRONT EPA SHOULD BE 11.90 FT²; (SIDE EPA SAME METHOD AS FRONT EPA).  
WHEN 3 SECTOR FRAMES ARE MOUNTED AT THE SAME RELATIVE ELEVATION IN AN ARRANGEMENT, IT HAS A 3-SECTOR EPA OF 12.28 FT² WITH NO ICE PLUS 3 ANTENNA PIPES WITH A 3-SECTOR EPA OF (3X1.84)X3=16.56 FT² WITH NO ICE. SO, THE TOTAL 3-SECTOR EPA SHOULD BE 28.84 FT².

COMMSCOPE, INC. OF NORTH CAROLINA

TITLE  
SECTOR FR, HD,TW, SFG21, 8FT, 3 ANT PIPE

SIZE <b>C</b>	SCALE <b>1:30</b>	DOCUMENT NO. MTC3975HD083
------------------	----------------------	------------------------------



DRAWING			SHEET 2 OF 8
VERSION	STATUS	REVISION	
06	RE	G	

4

3

2

1

4

3

2

1

D

D

C

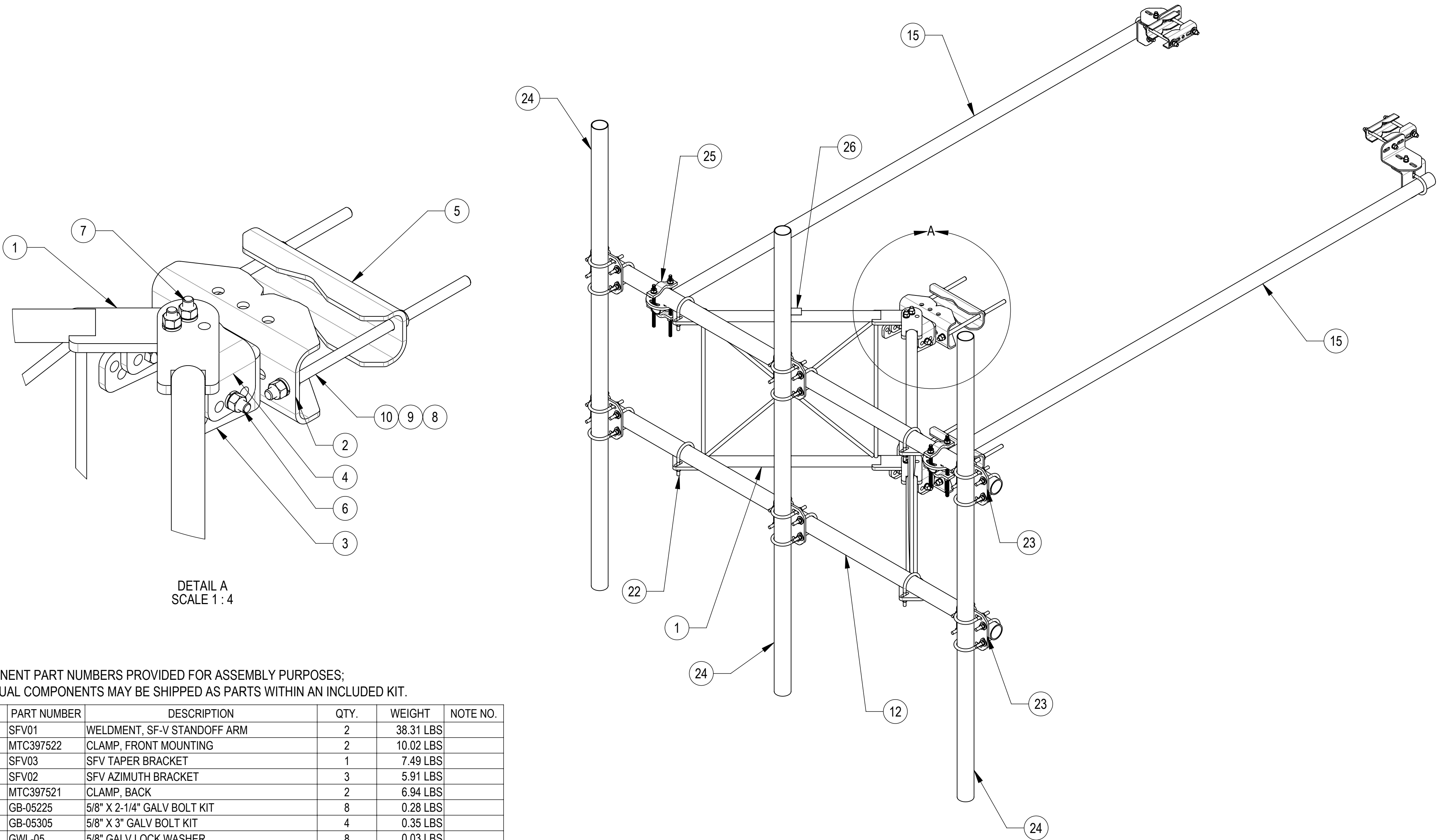
C

B

B

A

A



DETAIL A  
SCALE 1 : 4

COMPONENT PART NUMBERS PROVIDED FOR ASSEMBLY PURPOSES;  
INDIVIDUAL COMPONENTS MAY BE SHIPPED AS PARTS WITHIN AN INCLUDED KIT.

ITEM NO.	PART NUMBER	DESCRIPTION	QTY.	WEIGHT	NOTE NO.
1	SFV01	WELDMENT, SF-V STANDOFF ARM	2	38.31 LBS	
2	MTC397522	CLAMP, FRONT MOUNTING	2	10.02 LBS	
3	SFV03	SFV TAPER BRACKET	1	7.49 LBS	
4	SFV02	SFV AZIMUTH BRACKET	3	5.91 LBS	
5	MTC397521	CLAMP, BACK	2	6.94 LBS	
6	GB-05225	5/8" X 2-1/4" GALV BOLT KIT	8	0.28 LBS	
7	GB-05305	5/8" X 3" GALV BOLT KIT	4	0.35 LBS	
8	GWL-05	5/8" GALV LOCK WASHER	8	0.03 LBS	
9	GN-05	5/8" GALV HEX NUT	12	0.08 LBS	
10	MT-382-16	5/8" X 16" GALV THREADED ROD	4	1.38 LBS	
11	GWF-05	5/8" GALV FLAT WASHER, 1.7OD	6	0.06 LBS	
12	MT54696	PIPE, 2.875"OD X 96"	2	45.96 LBS	
13	GUB-4240	1/2" X 2-1/2" X 4" GALV U-BOLT	2	0.56 LBS	
14	XAU01	ANGLE, CROSSOVER, 1.9-3.5" X 1.9-3.5" OD	4	2.98 LBS	
15	MT-651-120	PIPE, 2.375"OD X 120"	2	29.07 LBS	
16	SAB01	FORMED CLAMP	4	1.35 LBS	
17	MT-379-8	1/2" X 8" GALV THREADED ROD	4	0.45 LBS	
18	GB-04145	1/2" X 1-1/2" GALV BOLT KIT	2	0.13 LBS	
19	GWF-04	1/2" GALV FLAT WASHER	8	0.04 LBS	
20	GWL-04	1/2" GALV LOCK WASHER	10	0.01 LBS	
21	GN-04	1/2" GALV HEX NUT	10	0.04 LBS	
22	GUB-4352	1/2" X 3" X 5-1/4" GALV U-BOLT	28	0.71 LBS	
23	XPU01	PLATE, CROSSOVER, 1.9-3.5" X 1.9-3.5" OD	6	4.76 LBS	
24	MT54696120	Ø 2.88" X 96" WALL GALV PIPE	3	28.35 LBS	
25	XP-R	CROSSOVER PLATE, ROUND, UP TO 3.5" OD	2	6.20 LBS	
26	SFG2150	LABEL, SFG21	1	0.04 LBS	

COMMSCOPE, INC. OF NORTH CAROLINA				
TITLE SECTOR FRAME,HD,TW,SFG21,8FT,3 ANT PIPE				
SIZE <b>C</b>	SCALE <b>1:12</b>	DOCUMENT NO. <b>MTC3975HD083</b>		
DRAWING		VERSION	STATUS	REVISION
		06	RE	G
				SHEET 3 OF 8

© 2023 CommScope, Inc. Confidential

4

3

2

1

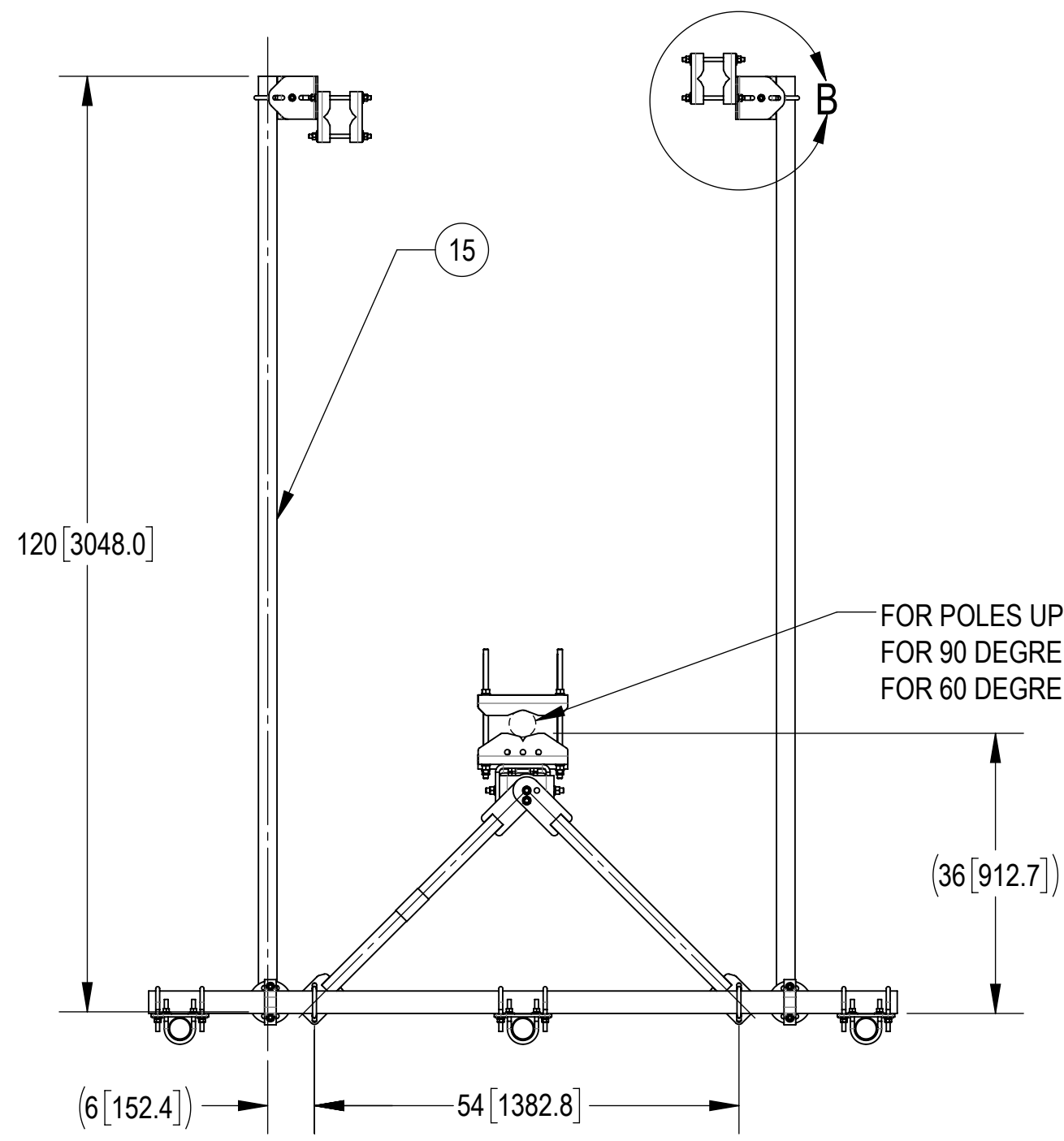
↑

4

3

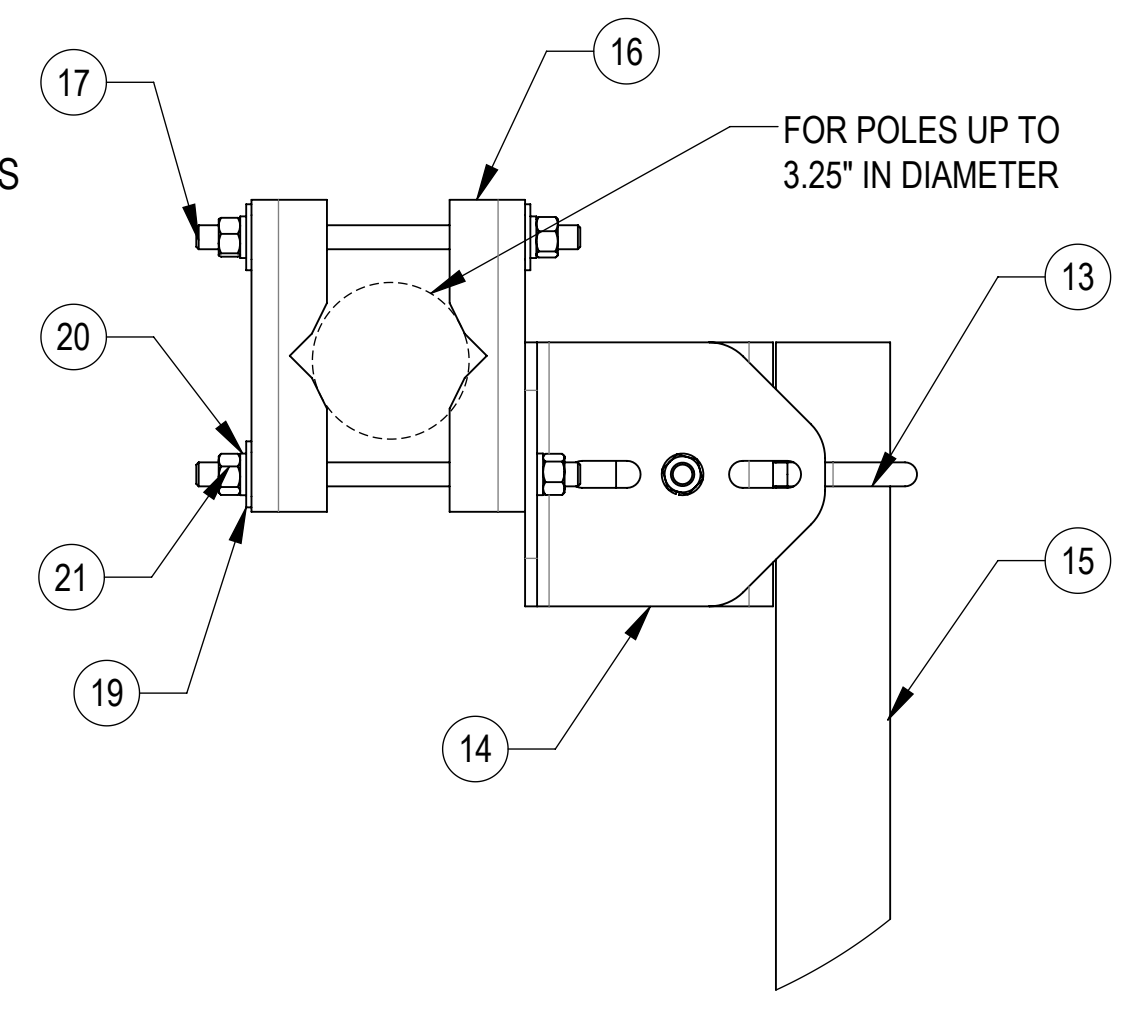
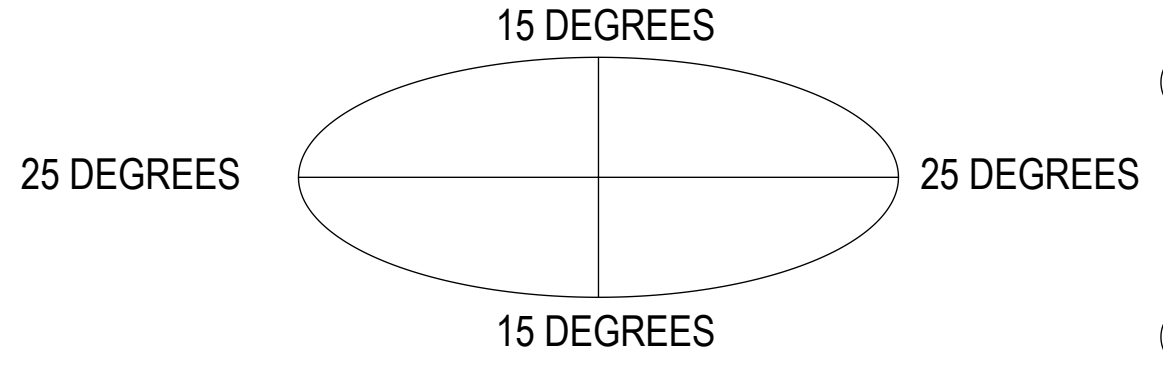
2

1

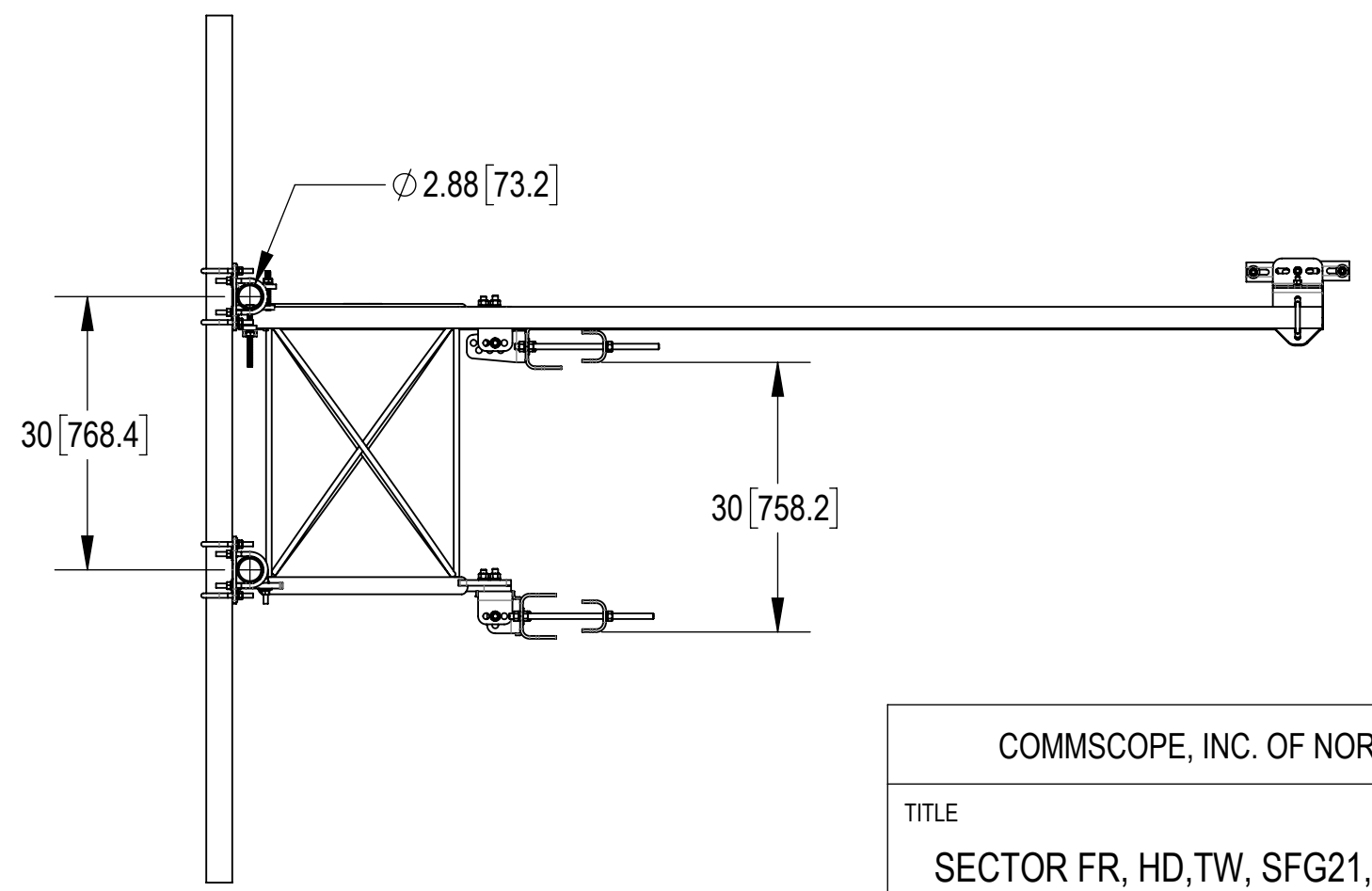
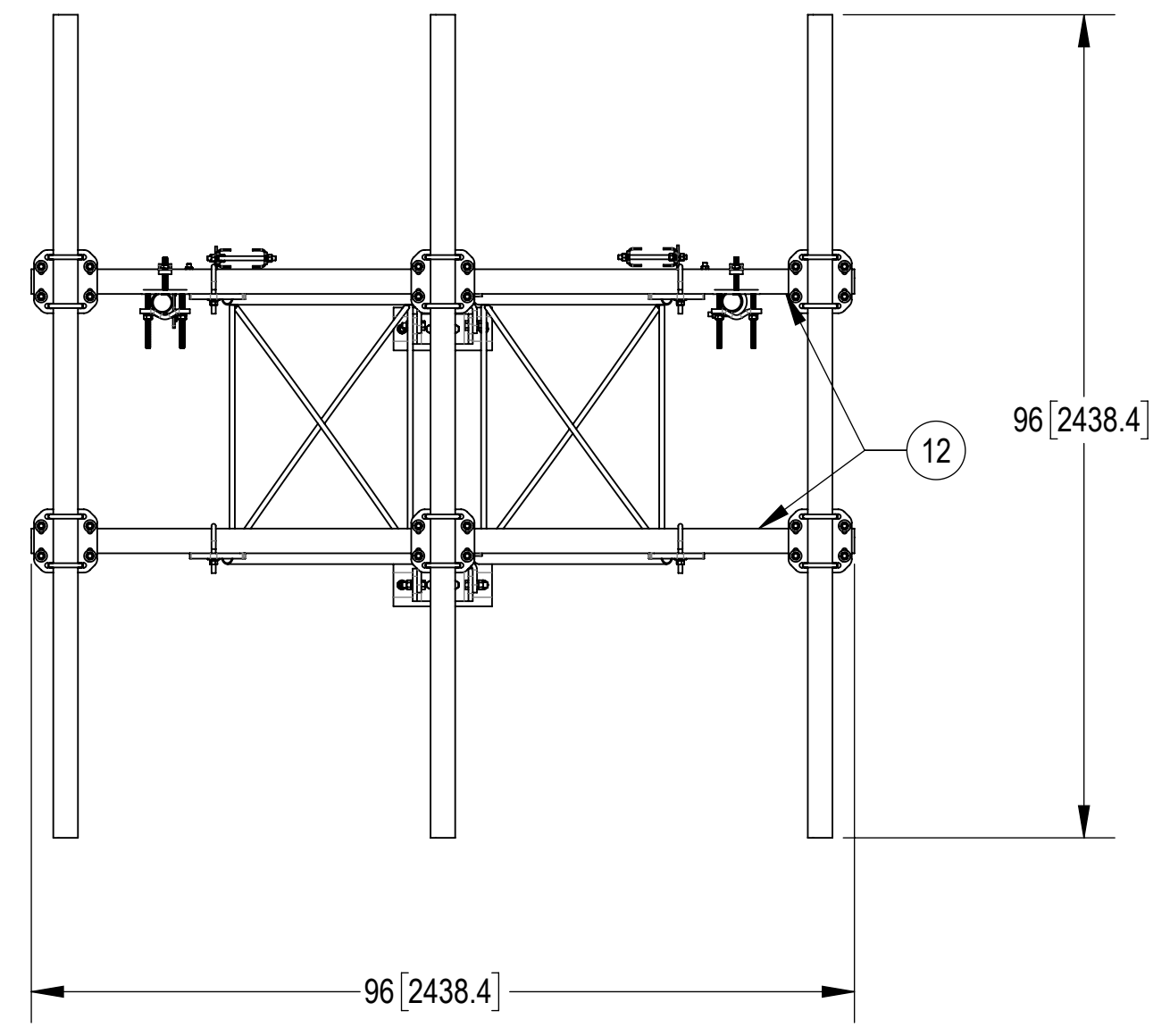


**ALLOWABLE TIEBACK ANGLE**

± 15 DEGREES VERTICAL  
± 25 DEGREES HORIZONTAL



**DETAIL B**  
SCALE 1 : 4



COMMSCOPE, INC. OF NORTH CAROLINA				
TITLE SECTOR FR, HD,TW, SFG21, 8FT, 3 ANT PIPE				
SIZE <b>C</b>	SCALE <b>1:20</b>	DOCUMENT NO. <b>MTC3975HD083</b>		
		DRAWING		SHEET
		VERSION	STATUS	REVISION
		06	RE	G
				4 OF 8

4

3

2

1

4

3

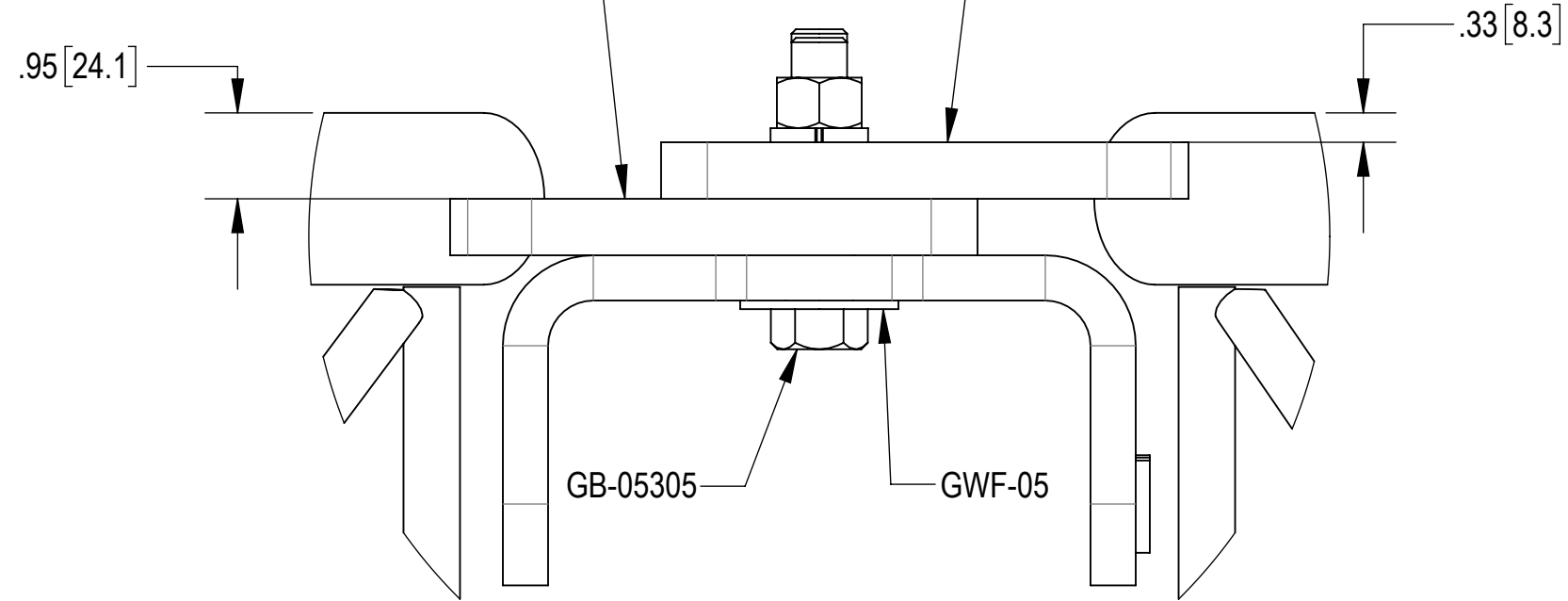
2

1

STEP1: ATTACH STANDOFF ARMS (SFV01) TO AZIMUTH BRACKETS (SFV02) USING BOLT KITS (GB-05305) AND FLAT WASHERS (GWF-05). PLACE LABEL (SFG2150) ON TOP OF STANDOFF ARMS (SFV01). (WIPE GALVANIZED SURFACE WITH ALCOHOL CLEANER BEFORE APPLYING LABEL)

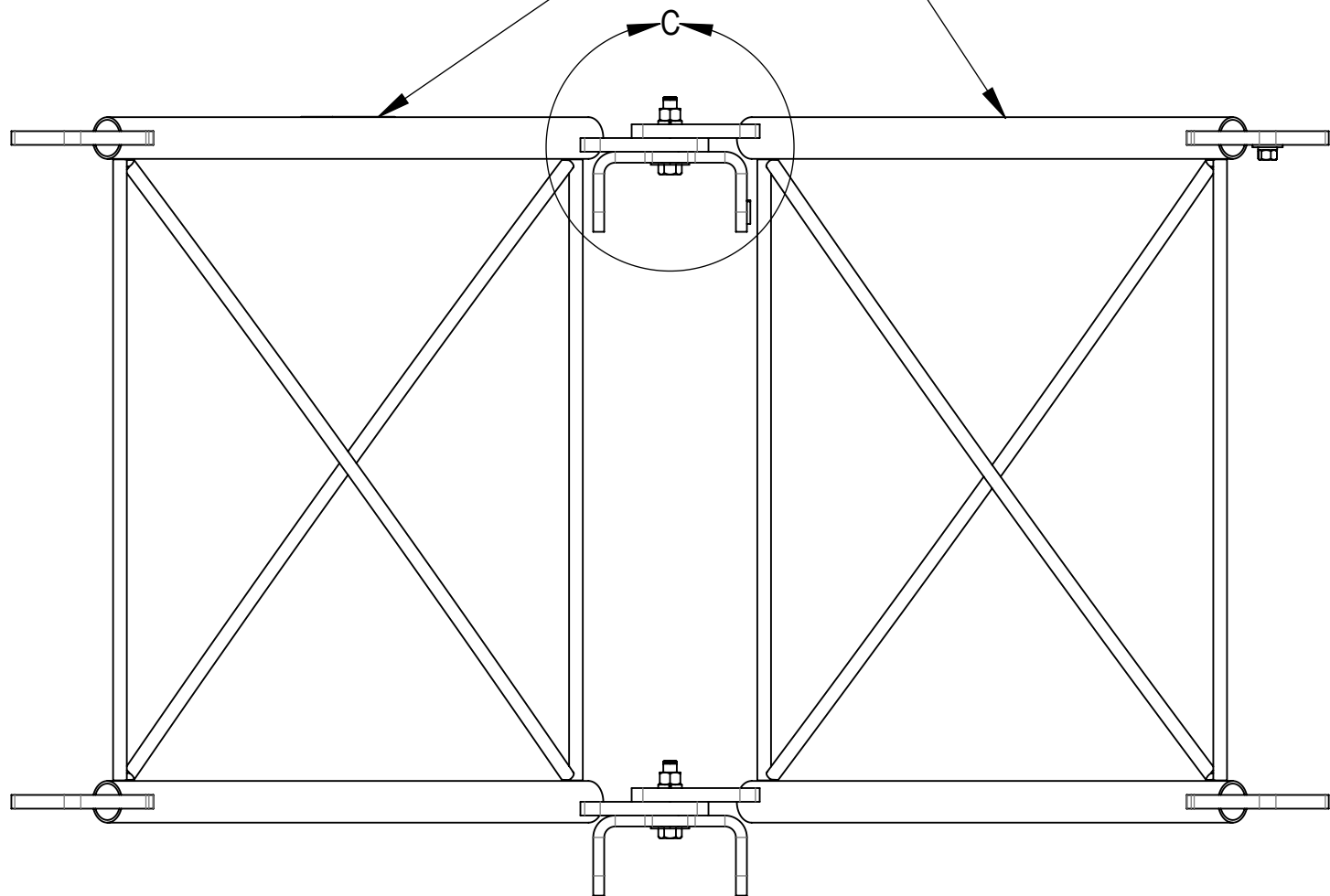
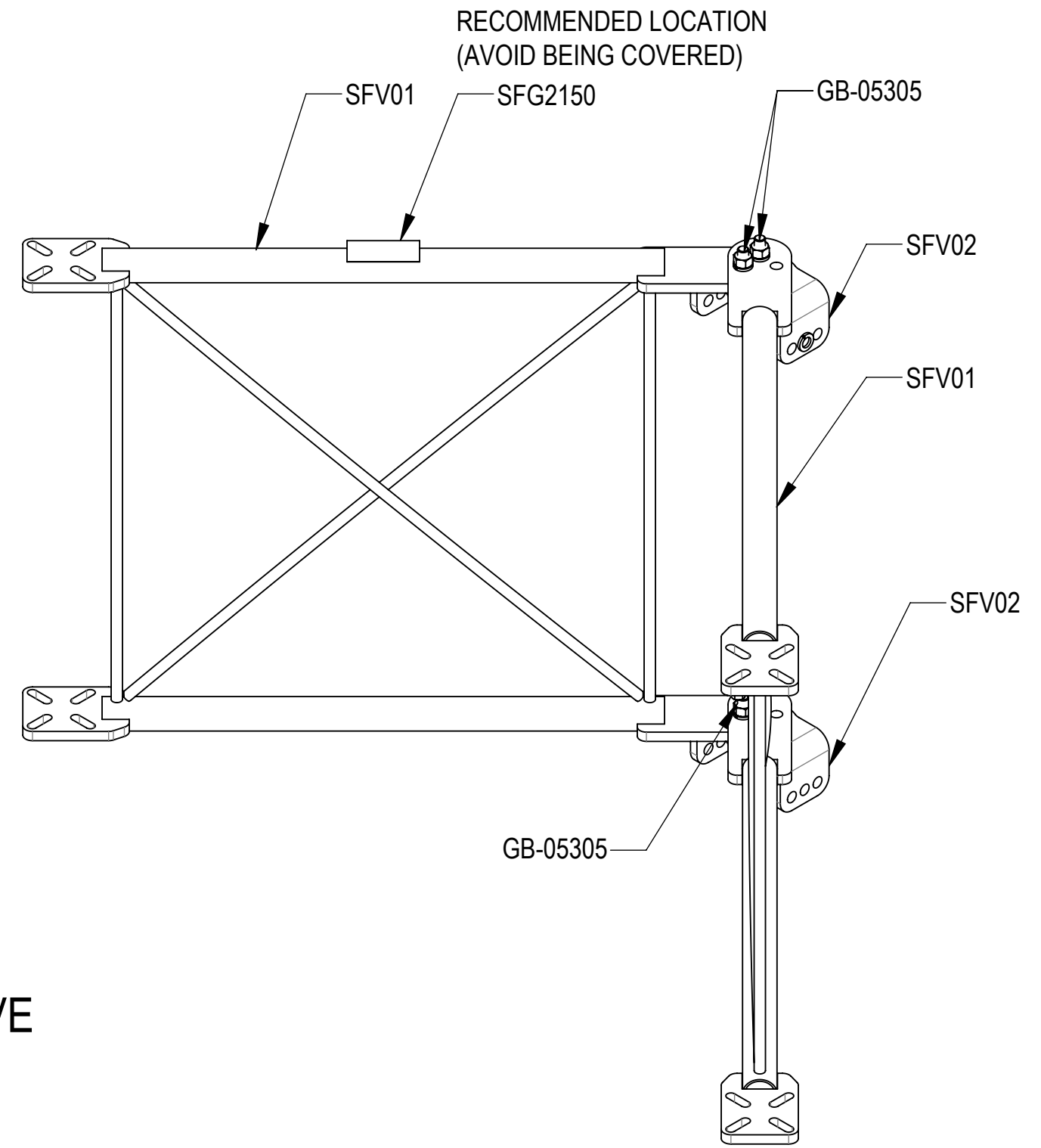
LOWER ARM "UPSIDE DOWN"

UPPER ARM "RIGHT SIDE UP"



DETAIL C  
SCALE 1:2

STANDOFF ARM ORIENTATION IS CRITICAL!  
WHEN ASSEMBLED, ARMS SHOULD BE LEVEL  
WITH EACH OTHER. ALSO SEE DETAIL C ABOVE



COMMSCOPE, INC. OF NORTH CAROLINA				
TITLE SECTOR FR, HD,TW, SFG21, 8FT, 3 ANT PIPE				
SIZE <b>C</b>	SCALE <b>1:8</b>	DOCUMENT NO. <b>MTC3975HD083</b>		
		DRAWING		SHEET
		VERSION	STATUS	REVISION
		06	RE	G
				5 OF 8

4

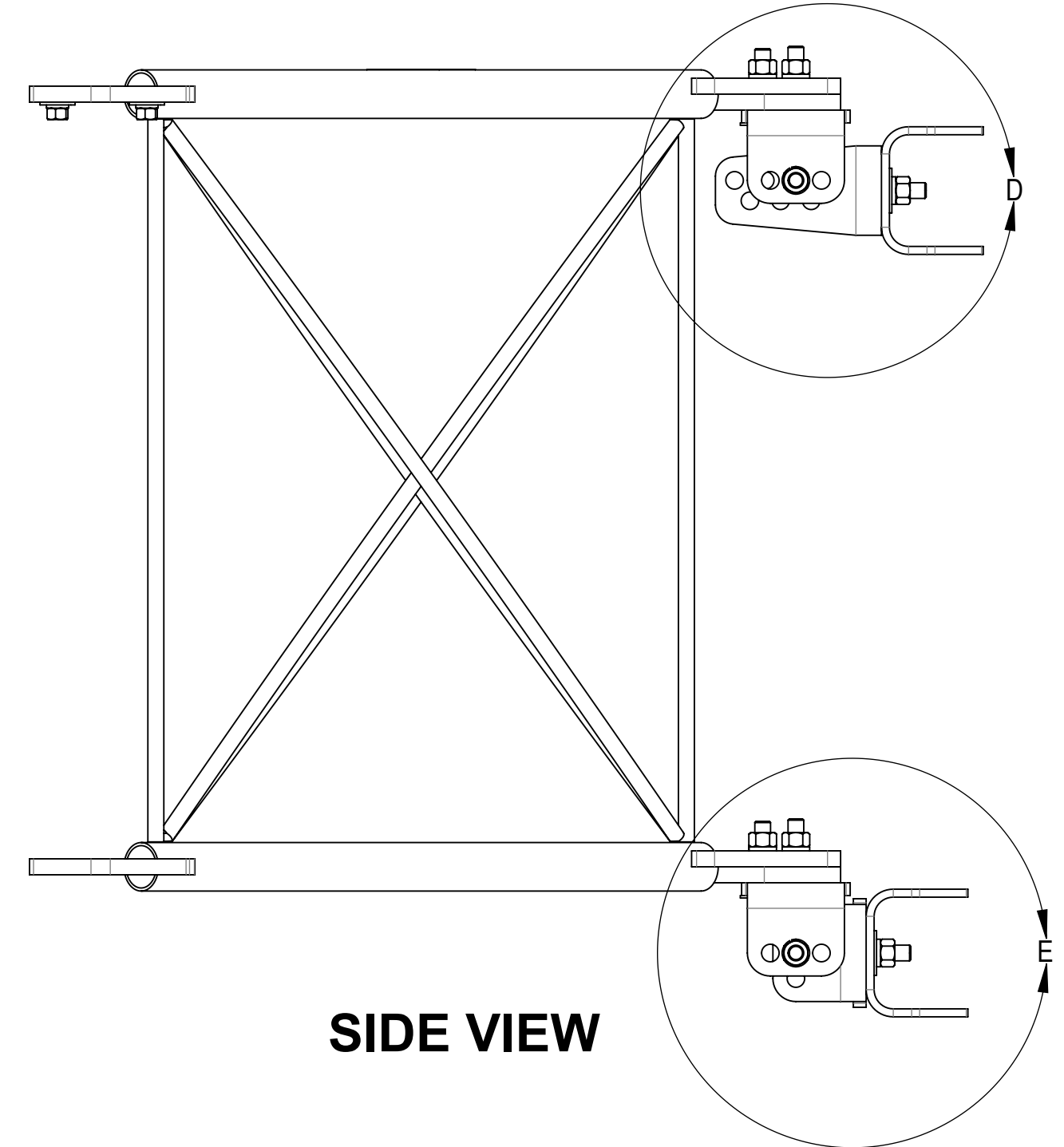
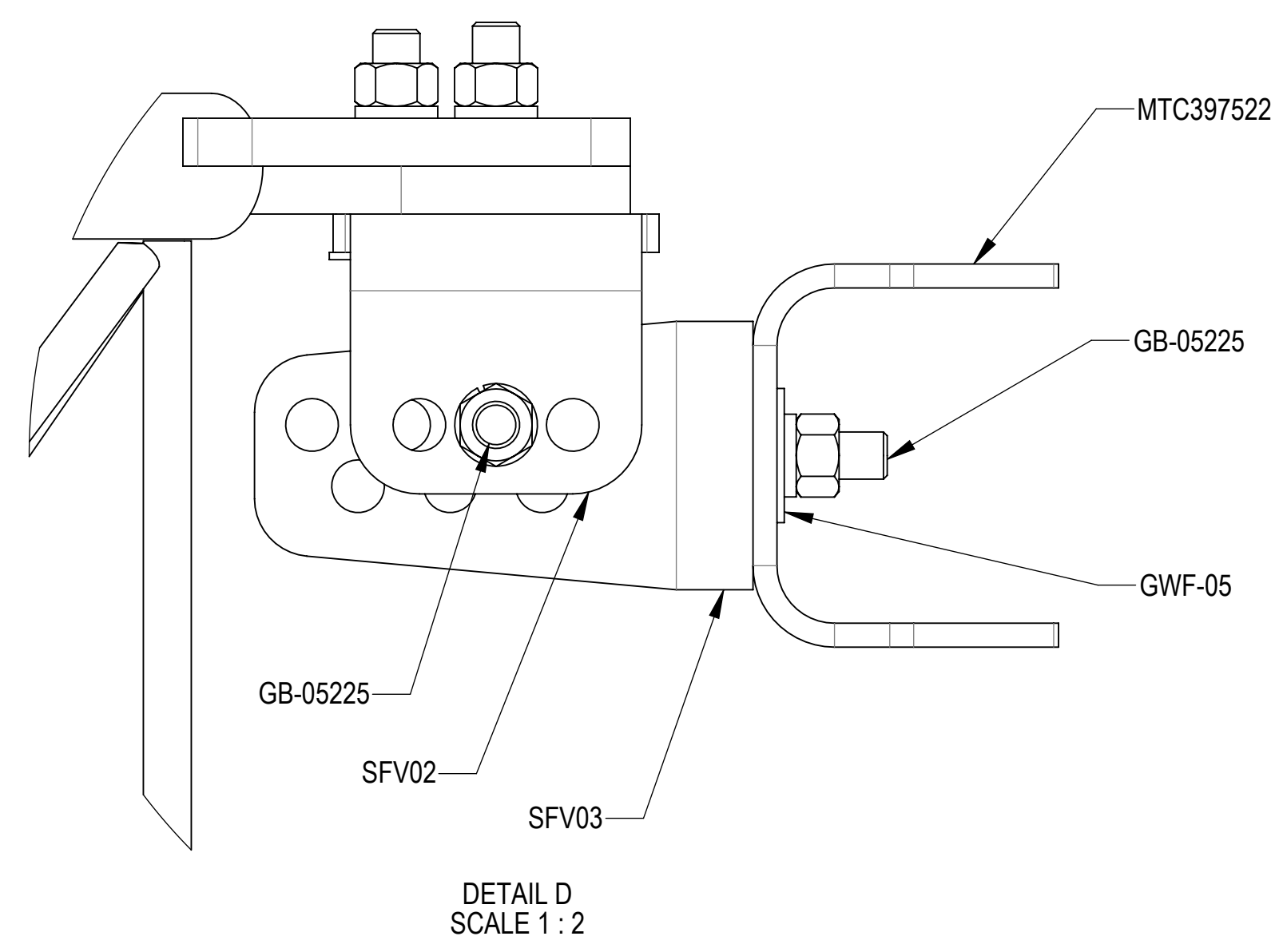
3

2

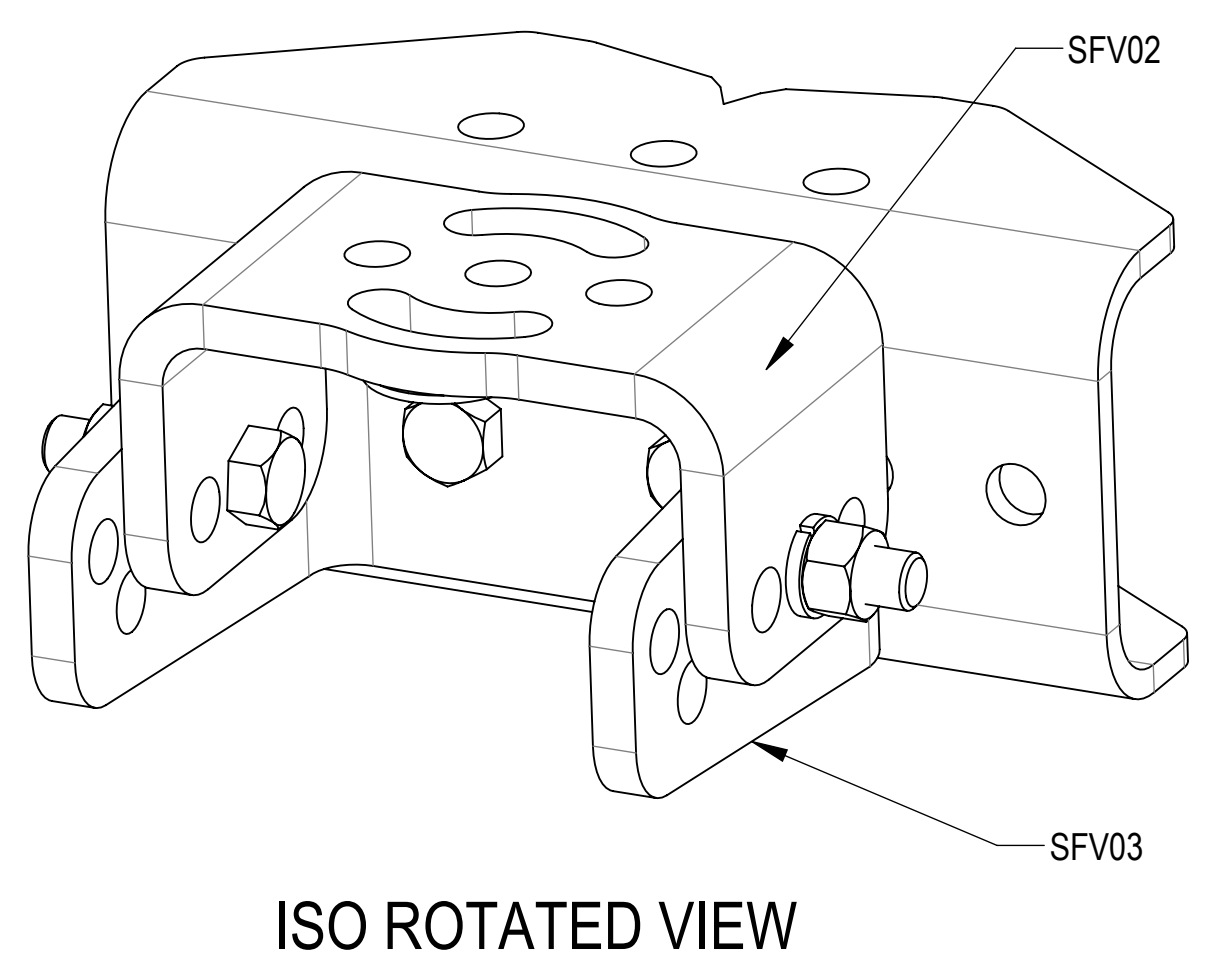
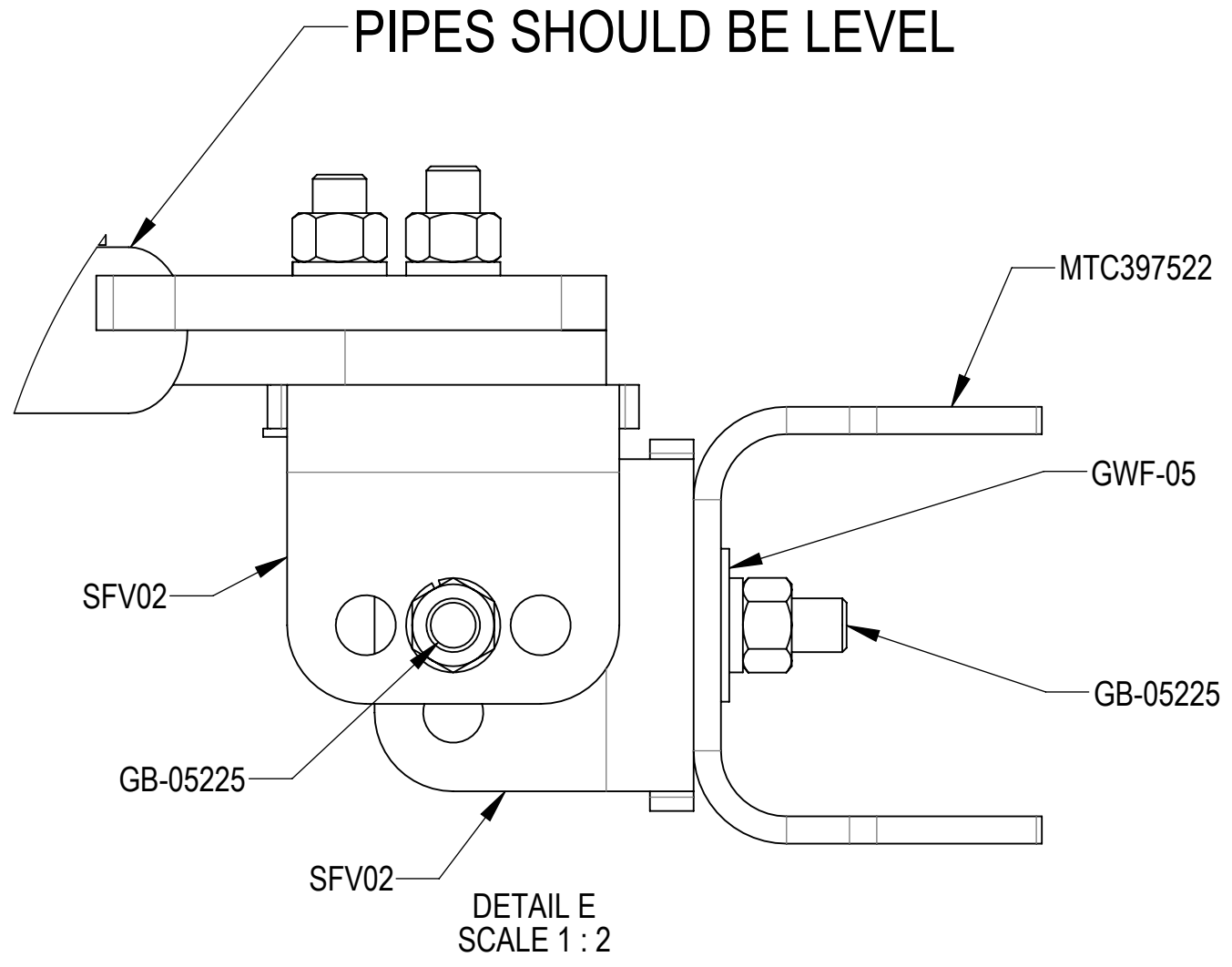
1

STEP 2A: ON TOP, ATTACH TAPER BRACKET (SFV03) TO AZIMUTH BRACKET (SFV02) USING BOLT KITS (GB-05225).  
 SEE ISO ROTATED VIEW. ATTACH TAPER BRACKET (SFV03) TO CLAMP, FRONT MTG (MTC397522) USING  
 BOLT KITS (GB-05225) AND FLAT WASHERS (GWF-05).

STEP 2B: ON BOTTOM, ATTACH AZIMUTH BRACKET (SFV02) TO AZIMUTH BRACKET (SFV02) USING BOLT KITS (GB-05225).  
 ATTACH AZIMUTH BRACKET (SFV02) TO CLAMP, FRONT MTG (MTC397522) USING BOLT KITS(GB-05225)  
 AND FLAT WASHERS (GWF-05).

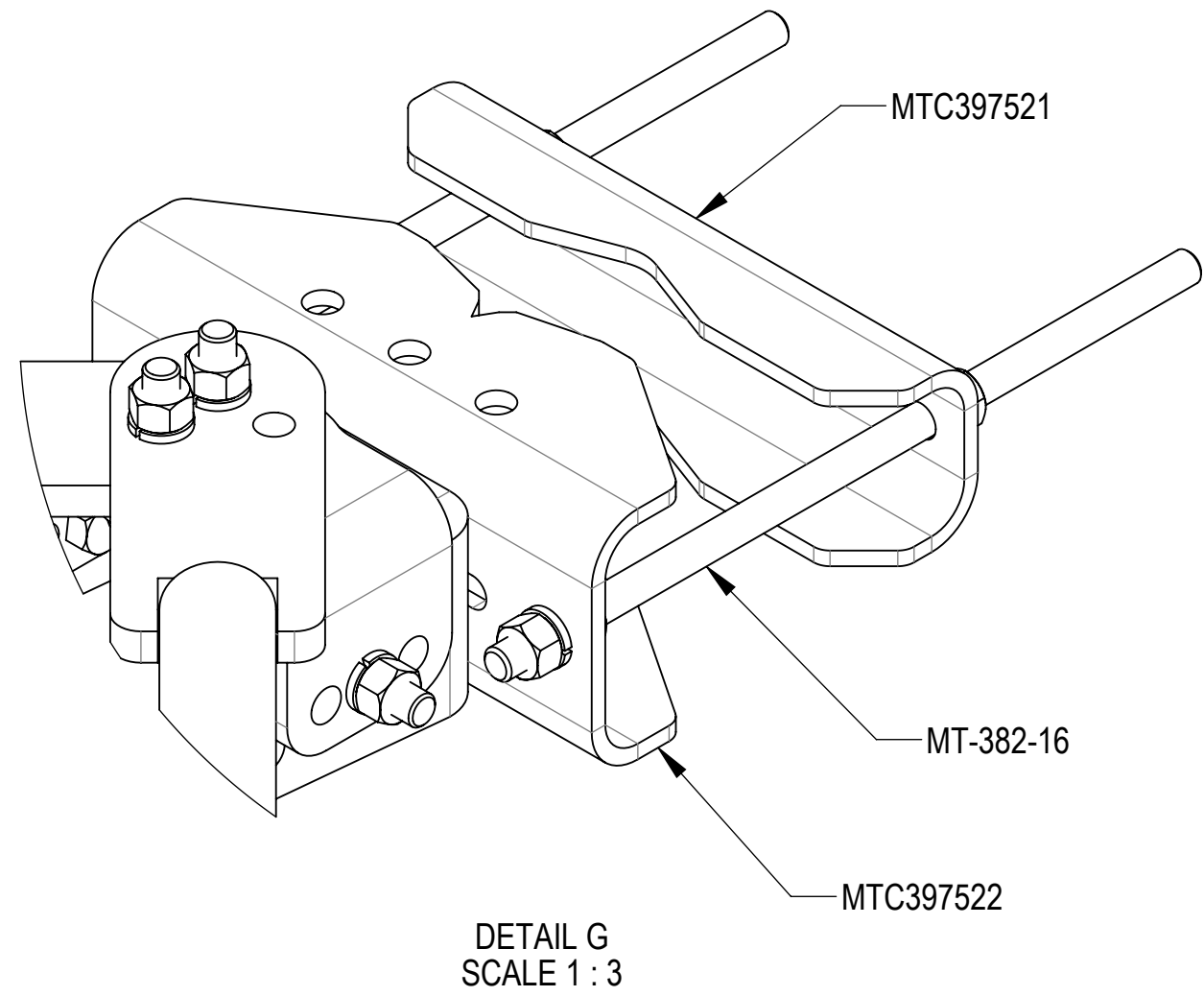


STANDOFF ARM ORIENTATION  
 IS CRITICAL! WHEN ASSEMBLED,  
 PIPES SHOULD BE LEVEL

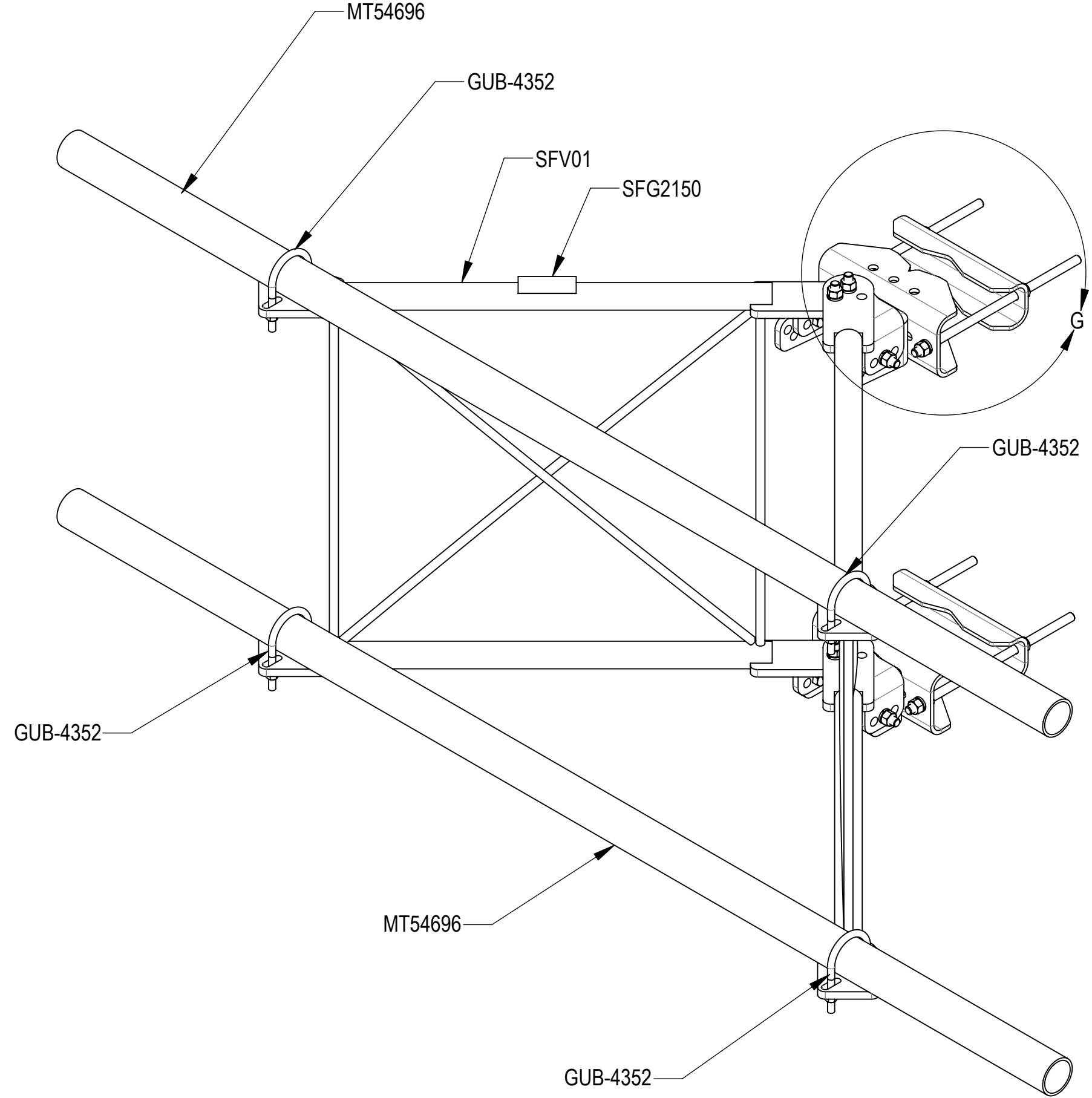


COMMSCOPE, INC. OF NORTH CAROLINA				
TITLE SECTOR FR, HD,TW, SFG21, 8FT, 3 ANT PIPE				
SIZE <b>C</b>	SCALE <b>1:4</b>	DOCUMENT NO. MTC3975HD083		
		DRAWING		SHEET
		VERSION	STATUS	REVISION
		06	RE	G
				6 OF 8

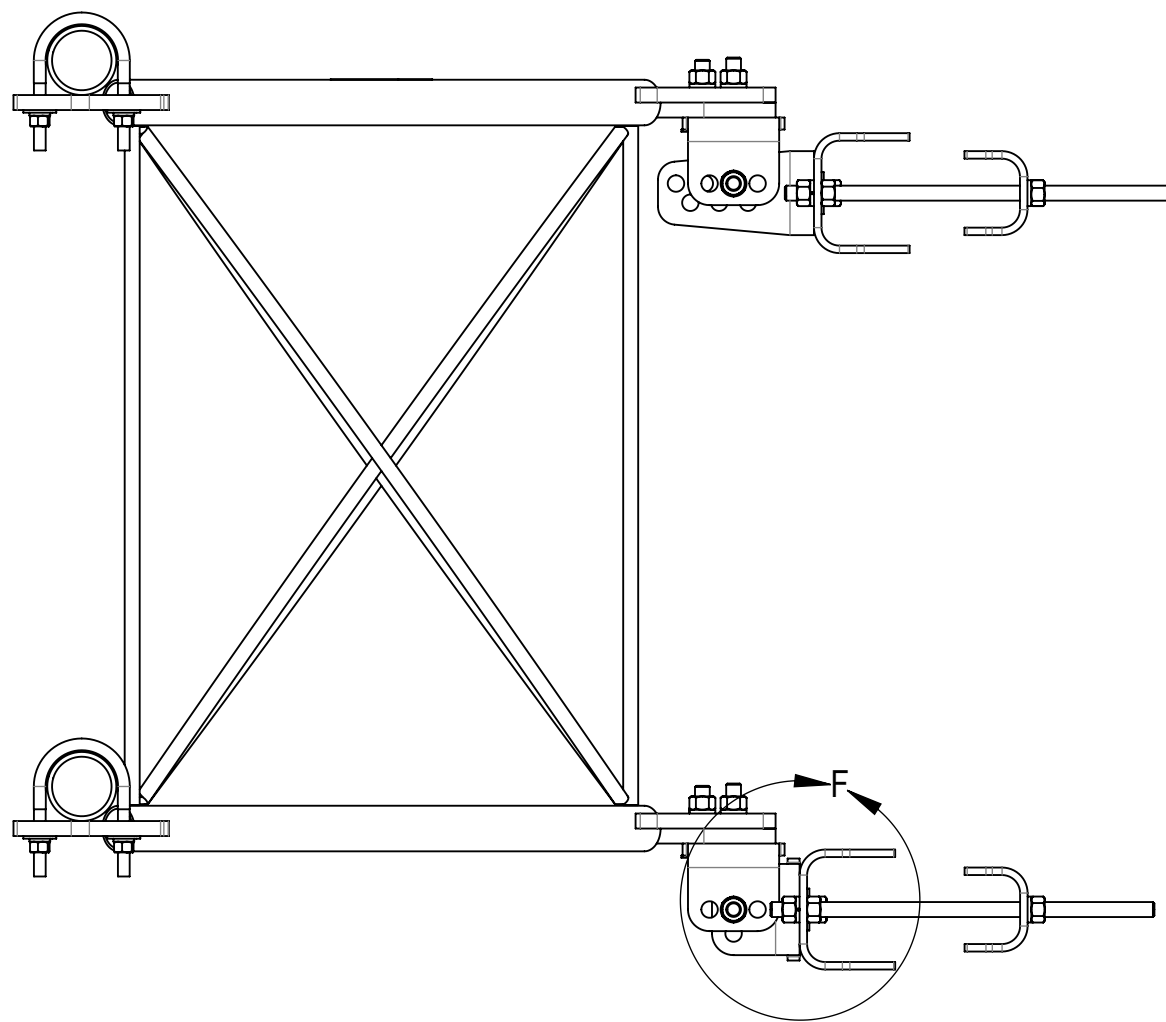
STEP 3: ATTACH FACE PIPES (MT54696) TO STANDOFF ARMS (SFV01) USING U-BOLTS (GUB-4352).



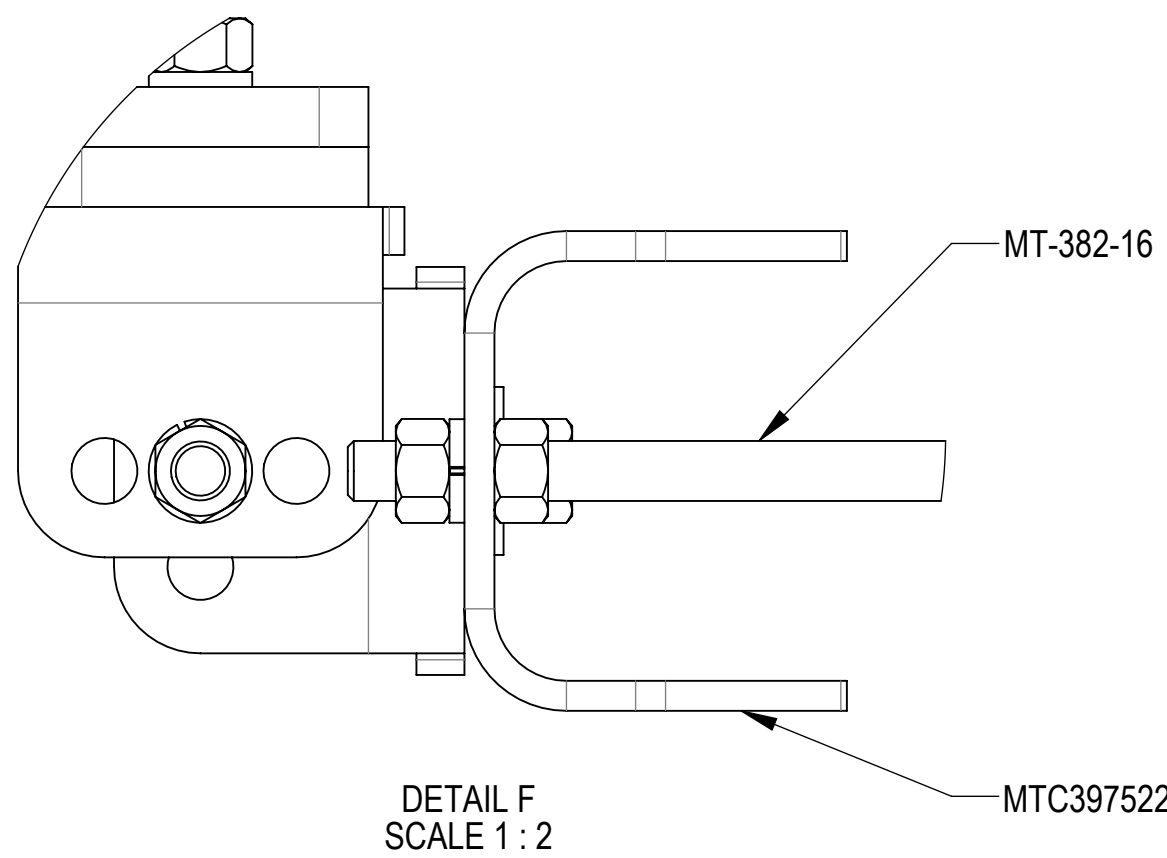
DETAIL G  
SCALE 1 : 3



ISO VIEW



SIDE VIEW

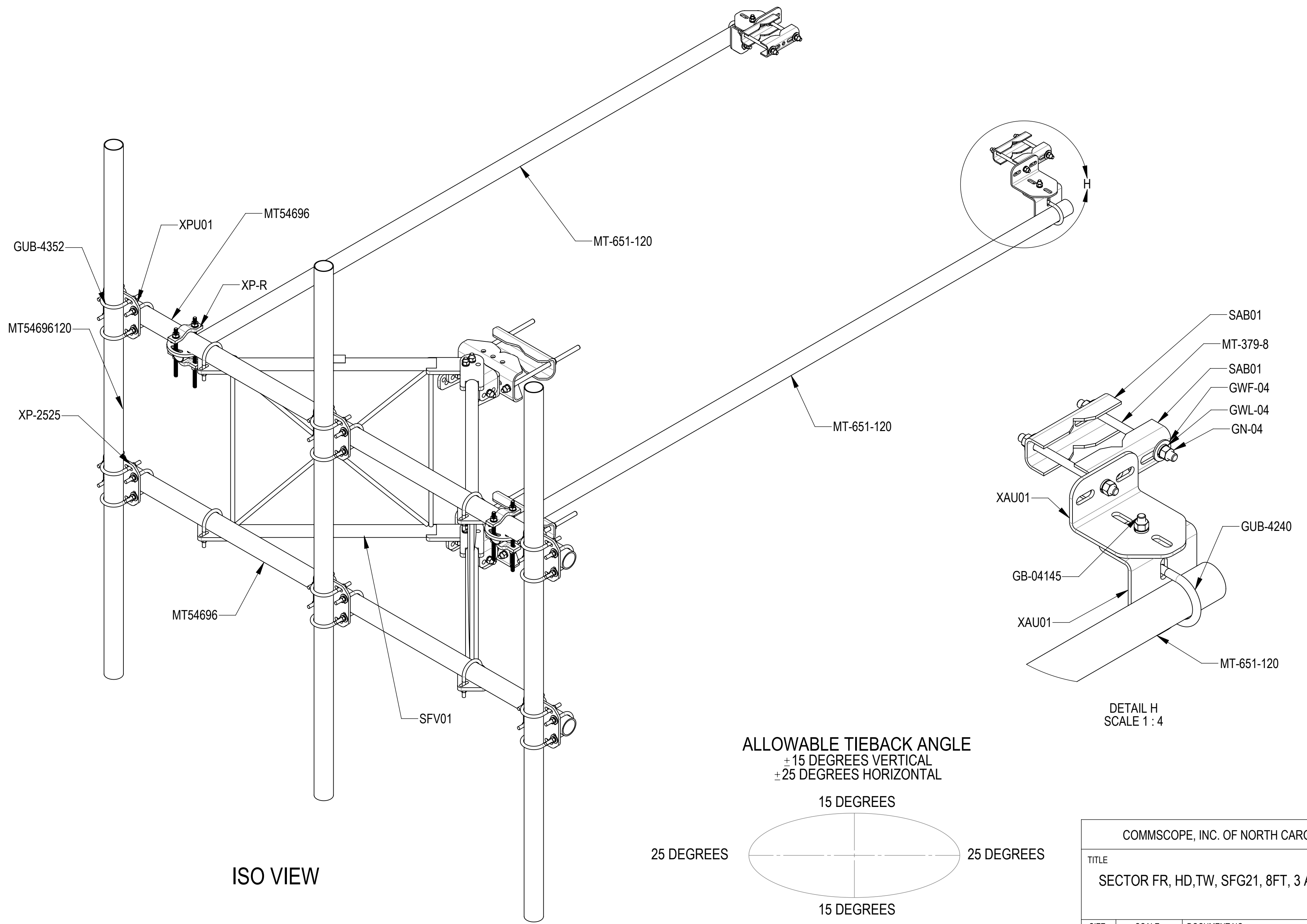


DETAIL F  
SCALE 1 : 2

COMMSCOPE, INC. OF NORTH CAROLINA				
TITLE SECTOR FR, HD,TW, SFG21, 8FT, 3 ANT PIPE				
SIZE C	SCALE 1:8	DOCUMENT NO. MTC3975HD083		
		DRAWING		SHEET 7 OF 8
		VERSION 06	STATUS RE	

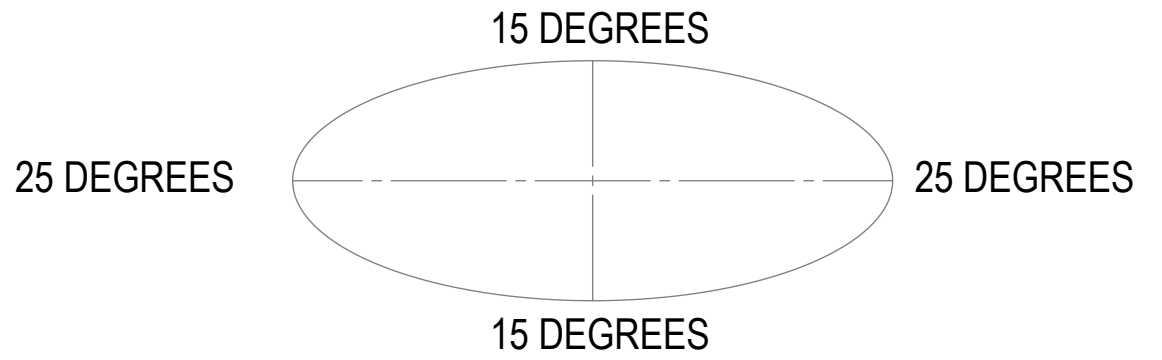


STEP 4: ATTACH ANTENNA PIPES(MT54696120) TO FACE PIPES(MT54696) USING CROSSOVER PLATES (XPU01) AND U-BOLTS (GUB-4352).  
 ATTACH TIE BACK PIPES (MT-651-120) TO FACE PIPE (MT54696) USING ROUND CROSSOVER PLATE KITS(XP-R).



ISO VIEW

ALLOWABLE TIEBACK ANGLE  
 ±15 DEGREES VERTICAL  
 ±25 DEGREES HORIZONTAL



DETAIL H  
 SCALE 1 : 4

COMMSCOPE, INC. OF NORTH CAROLINA				
TITLE SECTOR FR, HD,TW, SFG21, 8FT, 3 ANT PIPE				
SIZE <b>C</b>	SCALE <b>1:10</b>	DOCUMENT NO. <b>MTC3975HD083</b>		
		DRAWING		SHEET
		VERSION	STATUS	REVISION
		06	RE	G
				8 OF 8