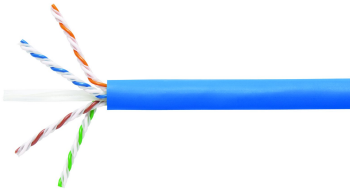


2171014-1 | TE640Z1-BLM2



640 Series Copper Cable, category 6A, 4 pair, UTP, LSZH, 23 AWG, 1000 ft reel, blue

OBSOLETE

This product was discontinued on: November 1, 2017

Replaced By:

884028704/10 CS44Z3 BLU C6A 4/23 U/UTP RL 305M	CS44Z3 ETL Verified Category 6A U/UTP LSZH Cable, blue jacket, 4 pair count, 1000 ft (305 m) length, reel
884028714/10 CS44Z3 BLU C6A 4/23 U/UTP CPK 305M	CS44Z3 ETL Verified Category 6A U/UTP LSZH Cable, blue jacket, 4 pair count, 1000 ft (305 m) length, CommPak

Product Classification

Regional Availability	Australia/New Zealand EMEA
Portfolio	NETCONNECT®
Product Type	Twisted pair cable
Product Series	640 Series

General Specifications

Product Number	640Z
ANSI/TIA Category	6A
Cable Component Type	Horizontal
Cable Type	U/UTP (unshielded)
Conductor Type, singles	Solid
Conductors, quantity	8
Jacket Color	Blue
Pairs, quantity	4
Transmission Standards	ANSI/TIA-568.2-D CENELEC EN 50288-6-1 ISO/IEC 11801 Class E

Dimensions

Cable Length	304.8 m 1000 ft
Diameter Over Jacket, nominal	7.62 mm 0.3 in

2171014-1 | TE640Z1-BLM2

Conductor Gauge, singles 23 AWG

Electrical Specifications

Operating Voltage, maximum 80 V

Remote Powering Fully complies with the recommendations set forth by IEEE 802.3bt (Type 4) for the safe delivery of power over LAN cable when installed according to ISO/IEC 14763-2, CENELEC EN 50174-1, CENELEC EN 50174-2 or TIA TSB-184-A

Safety Voltage Rating 300 V

Material Specifications

Conductor Material Bare copper

Insulation Material Polyolefin

Jacket Material Low Smoke Zero Halogen (LSZH)

Environmental Specifications

Operating Temperature -20 °C to +60 °C (-4 °F to +140 °F)

EN50575 CPR Cable EuroClass Fire Performance Dca

EN50575 CPR Cable EuroClass Smoke Rating s2

EN50575 CPR Cable EuroClass Droplets Rating d2

Packaging and Weights

Cable weight 58.038 kg/km | 39 lb/kft

Packaging Type Reel

Regulatory Compliance/Certifications

Agency	Classification
CENELEC	EN 50575 compliant, Declaration of Performance (DoP) available

