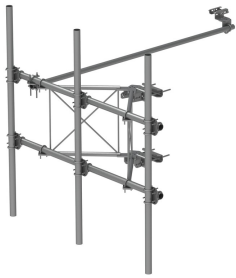


SFG21HD-8-3-96



G21HD Series High Capacity Sector Frame, 8 ft x 2.88 in OD face pipes, includes three 96 in x 2.38 OD antenna pipes

Product Classification

Product Type	High capacity Tower sector frame
Product Series	G2

General Specifications

Mounting	Angle 90°, 152.4 mm (6 in) Straight or tapered legs up to 203.2 mm (8 in) OD
Patent Number	Patent pending
Pipe, quantity	3
Sectors, quantity	1
Tower Taper	Non-tapered Tapered

Dimensions

Height	2,438.4 mm 96 in
Face Width	2.438 m 8 ft
Pipe Length	2,438.4 mm 96 in
Face Support Pipe Diameter	73.152 mm 2.88 in
Mounting Diameter, maximum	222.25 mm 8.75 in
Mounting Diameter, minimum	38.1 mm 1.5 in
Pipe Outer Diameter	60.452 mm 2.38 in
Stand-off Distance	889 mm 35 in

Material Specifications

Material Type	Hot dip galvanized steel
----------------------	--------------------------

Mechanical Specifications

Wind Rating	For Specifications, please contact steelproducts@commscope.com or call 800-255-1479
--------------------	--

SFG21HD-8-3-96

Wind Rating Test Method TIA/EIA-222-G

Packaging and Weights

Included Frame | Pipe mounts | Plain end pipes (3) | Stiff arm | Tower attachment
Packaging quantity 1
Weight, net 159.665 kg | 352 lb

* Footnotes

Wind Rating BWS—Base Wind Speed; FBC—Florida Building Code