

4

3

2

1

1.0 GENERAL NOTES

- 1.1 ALL METRIC DIMENSIONS ARE IN BRACKETS [X. X]
- 1.2 FOR PATENT INFO: <https://www.cs-pat.com>

2.0 DESIGN NOTES

- 2.1 ANY HAZARDS OR OBSTRUCTIONS TO THE CLIMBING FACILITY AND SAFETY CLIMB MUST BE IDENTIFIED PRIOR TO INSTALLING THE APPURTENANCE. ADDITIONAL PRODUCTS MAY BE REQUIRED TO MAINTAIN THE INTEGRITY OF THE SAFETY CLIMB. DURING INSTALLATION, TEMPORARY AND/OR PERMANENT PRECAUTIONARY MEASURES SHOULD BE TAKEN TO PRESERVE THE CLIMBING FACILITY AND/OR SAFETY CLIMB.
- 2.2 UP TO 5.7° TAPER AVAILABLE ON MODELS THAT SUPPORT ADJUSTMENT.

3.0 MANUFACTURING/SPECIAL REQUIREMENTS

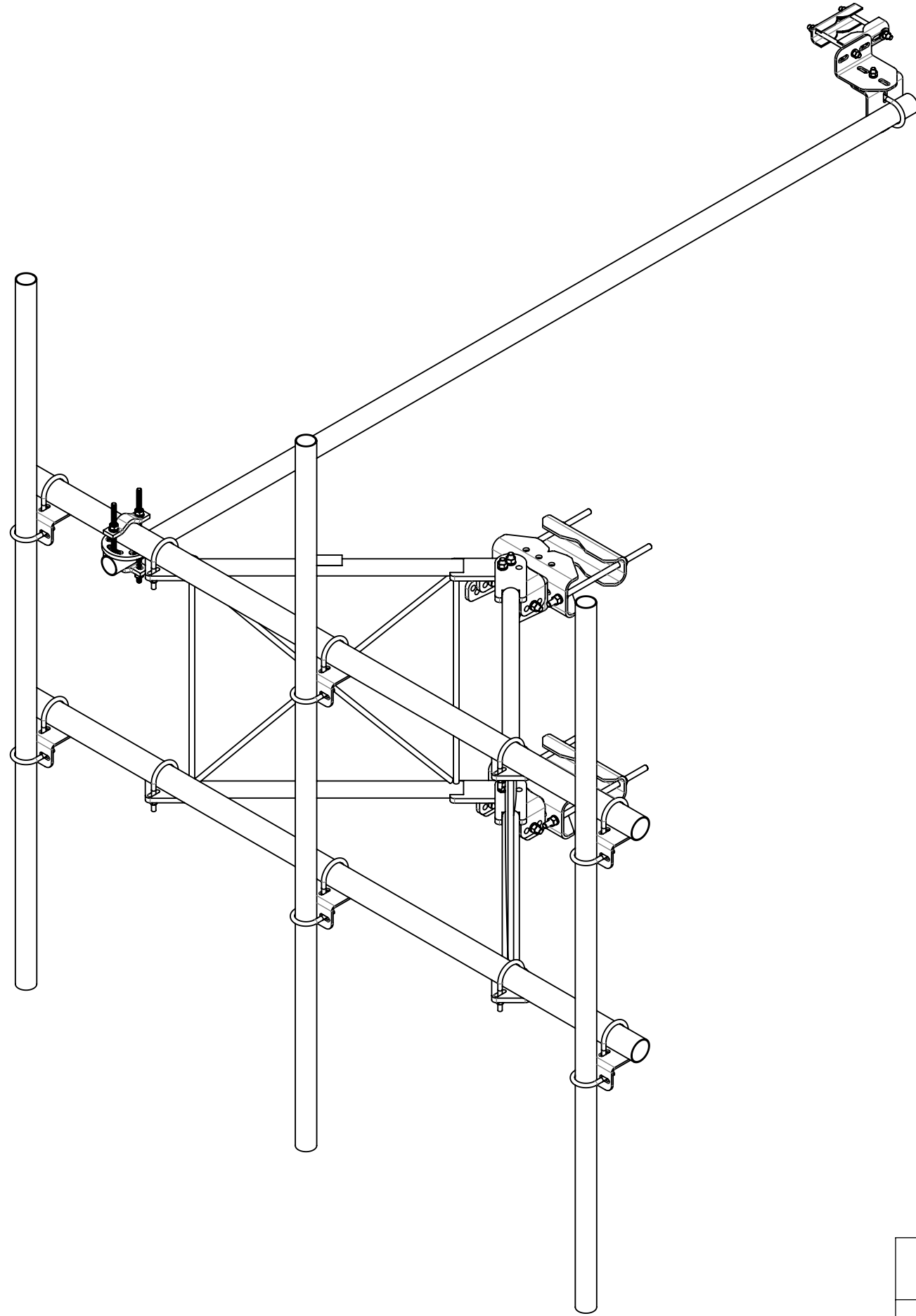
- 3.1 TIGHTEN ALL BOLTS SECURING FLAT PLATES BY THE TURN-OF-NUT METHOD. TIGHTEN ALL U-BOLTS USING TURN-OF-NUT METHOD WITH ATTENTION TO LEAVE EQUAL DISTANCE AND EQUAL FORCE ON EACH LEG OF THE U-BOLT.

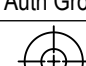
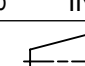
4.0 TEST

5.0 PACKAGING

- 5.1 PACKAGING SHALL MEET COMMSCOPE REQUIREMENTS PER DOCUMENT IS-PL-3005.
- 5.2 PRINTED DOCUMENT TO BE PLACED INSIDE POLYBAG AND THEN IN SHIPPING CONTAINER.
- 5.3 EXTRA HARDWARE MAY BE SUPPLIED, BAGGED AND SHIPPED.

REVISIONS			
REV.	DESCRIPTION	DATE	APPROVED
A	INITIAL RELEASE	LS1146 24MAY23	WQ1001 40172254CMO
B	ADDED LABEL TO THE TOP OF V-ARM; UPDATED BOM PER NEW SA-B	RY1002 29AUG23	YW1045 40177837CMO
C	SHEET2: ADDED SFG2152 TO TABLE 1; SHEET5: ADDED LABEL INSTALLATION NOTICE	JL1183 17NOV23	YW1045 40183325CMO
D	BOM STANDARDIZATION: CROSSOVER PLATE KIT WAS XP-2525, MT54696120 WAS MT54696, MT-537 WAS MT-651-120	YMENG 26NOV24	YZ1080 40209683CMO



COMMSCOPE, INC. OF NORTH CAROLINA										
TOLERANCES					SAP MATERIAL MASTER					
1 PLACE .X[X] ± 0.25[6.3]			3 PLACE .XXX[X] ± 0.060[1.5]		SFG21HD-8-3-96					
2 PLACE .XX[X] ± 0.12[3.0]			ANGLES ± 2°							
FINISH					MATERIAL					
UNLESS OTHERWISE SPECIFIED DIMENSIONS ARE IN INCHES INTERPRET PER ANSI Y 14.5M-1994	NAME		DATE		TITLE					
	CE LS1146		24MAY23		SF,8FT-FACE,(3) 2-3/8"X96"ANT-PIPES					
	RW YMENG		12/05/2024							
	AD YZ1080		12/05/2024							
	RE YMENG		12/05/2024							
ECN 40209683CMO					SCALE		DOCUMENT NO.			
					1:8		SFG21HD-8-3-96			
SIZE		Auth Group		INSL		MODEL			DRAWING	
C		 				VERSION			STATUS	
						02			RE	
						D			03	
						RE			D	
									SHEET	
									1 OF 3	

DENSITY		lbs/in ³
MASS	352.136	lbs
VOLUME	1246.91	in ³
SURFACE AREA	19715.555	in ²
HEIGHT	96"	
LENGTH	126"	
WIDTH	96"	

4

3

2

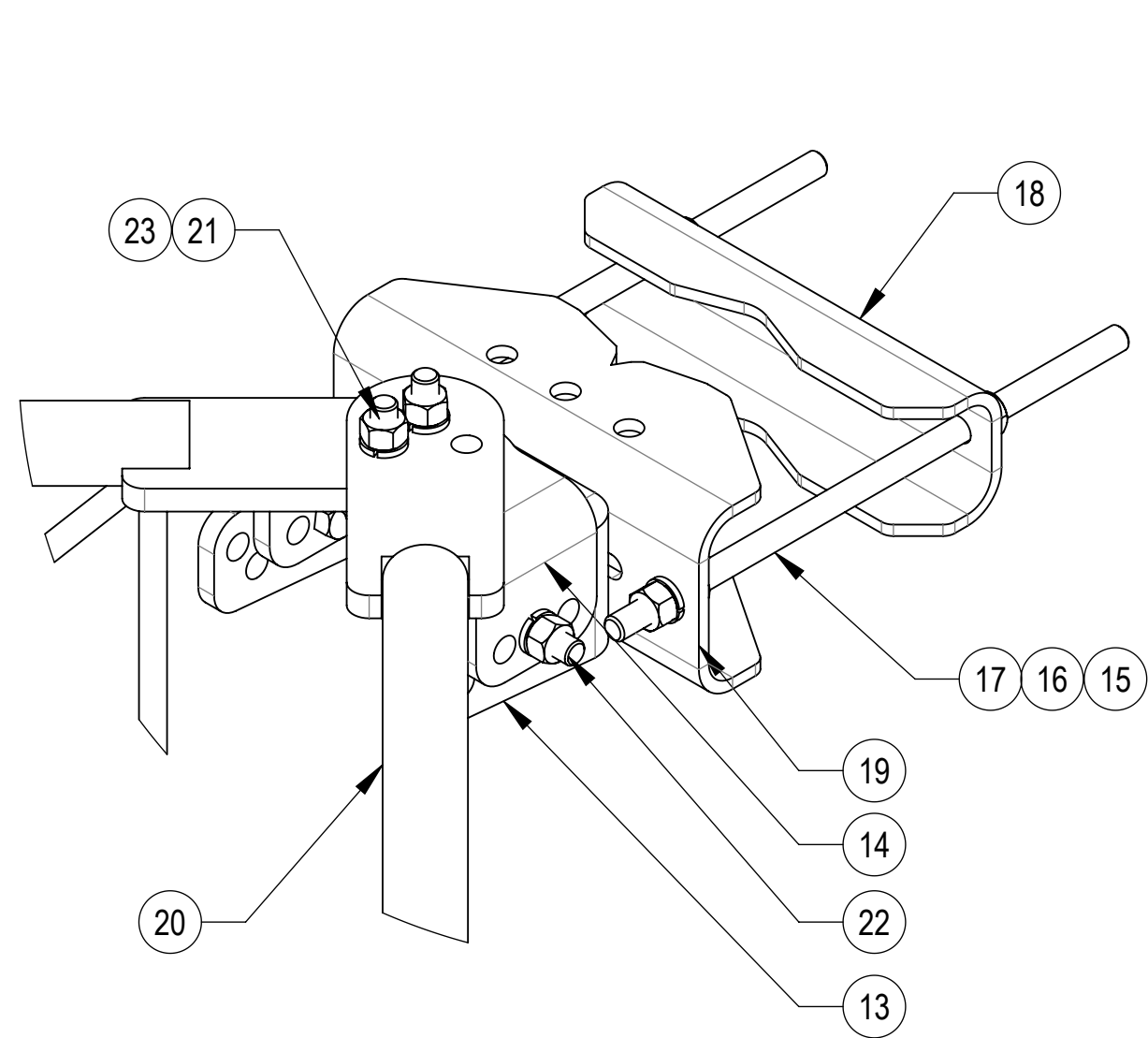
1

4

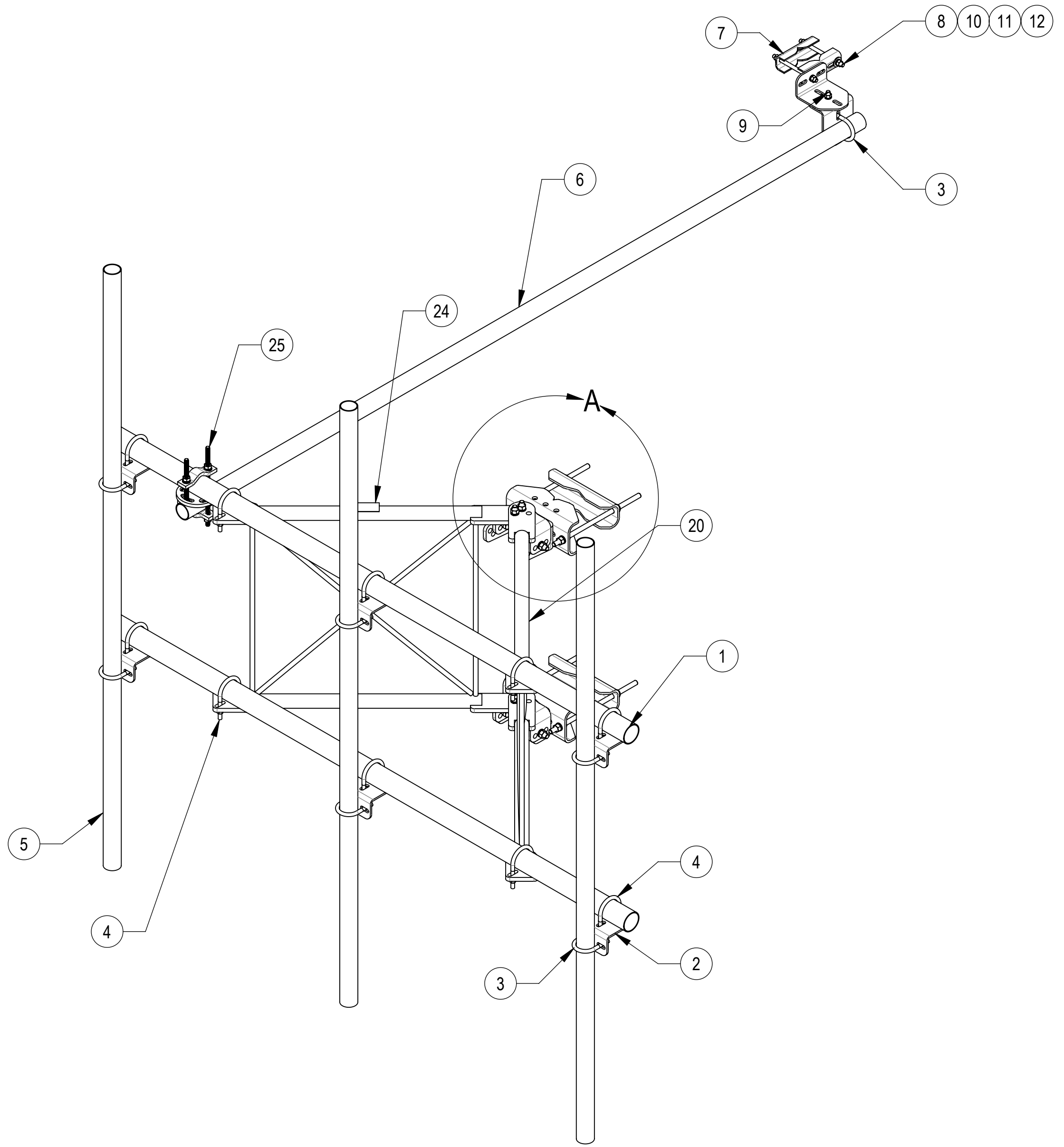
3

2

1



DETAIL A
SCALE 1 : 4



COMPONENT PART NUMBERS PROVIDED FOR ASSEMBLY PURPOSES;
INDIVIDUAL COMPONENTS MAY BE SHIPPED AS PARTS WITHIN AN INCLUDED KIT.

ITEM	PART NO.	DESCRIPTION	QTY.	WEIGHT	NOTE NO.
1	MT54696120	PIPE, 2.875"OD X 96"	2	28.35 LBS	
2	XAU01	ANGLE, CROSSOVER, 1.9-3.5" X 1.9-3.5" OD	8	2.98 LBS	
3	GUB-4240	1/2" X 2-1/2" X 4" GALV U-BOLT	7	0.56 LBS	
4	GUB-4352	1/2" X 3" X 5-1/4" GALV U-BOLT	10	0.71 LBS	
5	MT-651-96	2.375" OD X 96" PIPE	3	23.05 LBS	
6	MT-537	2.375" OD x 126" PIPE	1	30.45 LBS	
7	SAB01	FORMED CLAMP	2	1.35 LBS	
8	MT-379-8	1/2" X 8" GALV THREADED ROD	2	0.45 LBS	
9	GB-04145	1/2" X 1-1/2" GALV BOLT KIT	1	0.13 LBS	
10	GWF-04	1/2" GALV FLAT WASHER	4	0.04 LBS	
11	GWL-04	1/2" GALV LOCK WASHER	5	0.01 LBS	
12	GN-04	1/2" GALV HEX NUT	5	0.04 LBS	
13	SFV03	SFV TAPER BRACKET	1	7.49 LBS	
14	SFV02	SFV AZIMUTH BRACKET	3	5.91 LBS	
15	GN-05	5/8" GALV HEX NUT	12	0.08 LBS	
16	GWL-05	5/8" GALV LOCK WASHER	8	0.03 LBS	
17	MT-382-16	5/8" X 16" GALV THREADED ROD	4	1.38 LBS	
18	MTC397521	CLAMP, BACK	2	6.94 LBS	
19	MTC397522	CLAMP, FRONT MOUNTING	2	10.02 LBS	
20	SFV01	WELDMENT, SF-V STANDOFF ARM	2	38.31 LBS	
21	GB-05305	5/8" X 3" GALV BOLT KIT	4	0.35 LBS	
22	GB-05225	5/8" X 2-1/4" GALV BOLT KIT	8	0.28 LBS	
23	GWF-05	5/8" GALV FLAT WASHER, 1.7OD	6	0.06 LBS	
24	SFG2152	LABEL, SFG21HD	1	0.04 LBS	
25	XP-R	CROSSOVER PLATE, ROUND, UP TO 3.5" OD	1	6.20 LBS	

COMMSCOPE, INC. OF NORTH CAROLINA				
TITLE SF,8FT-FACE,(3) 2-3/8"X96"ANT-PIPES				
SIZE C	SCALE 1:12	DOCUMENT NO. SFG21HD-8-3-96		
DRAWING		VERSION	STATUS	REVISION
		03	RE	D
				SHEET 2 OF 3

© 2024 CommScope, Inc. Confidential

4

3

2

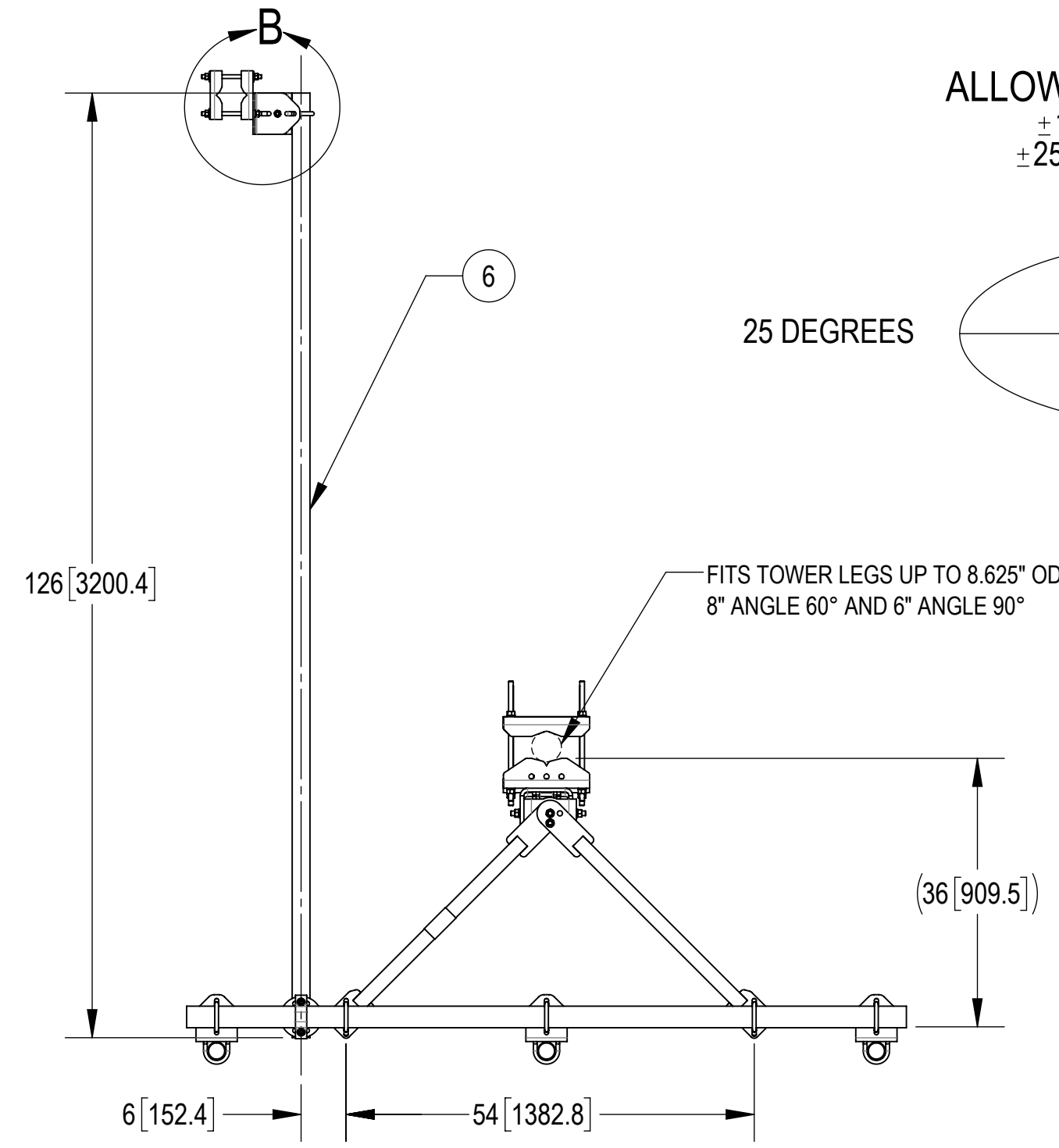
1

4

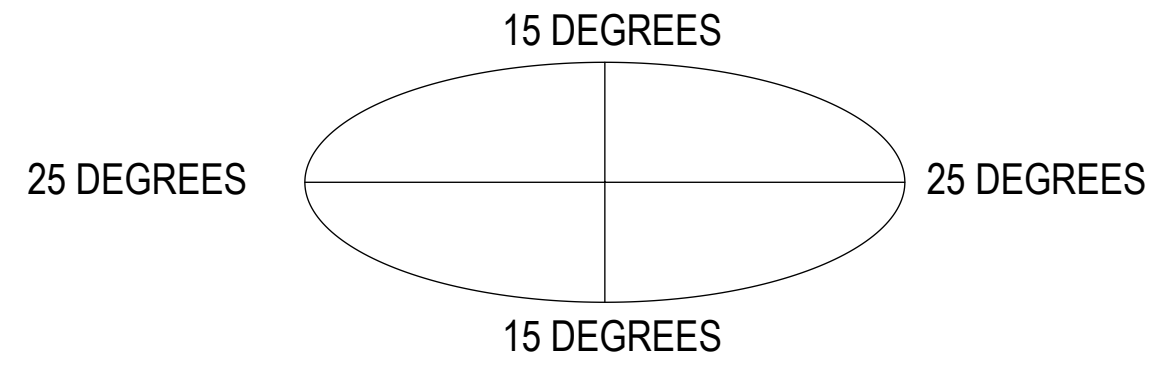
3

2

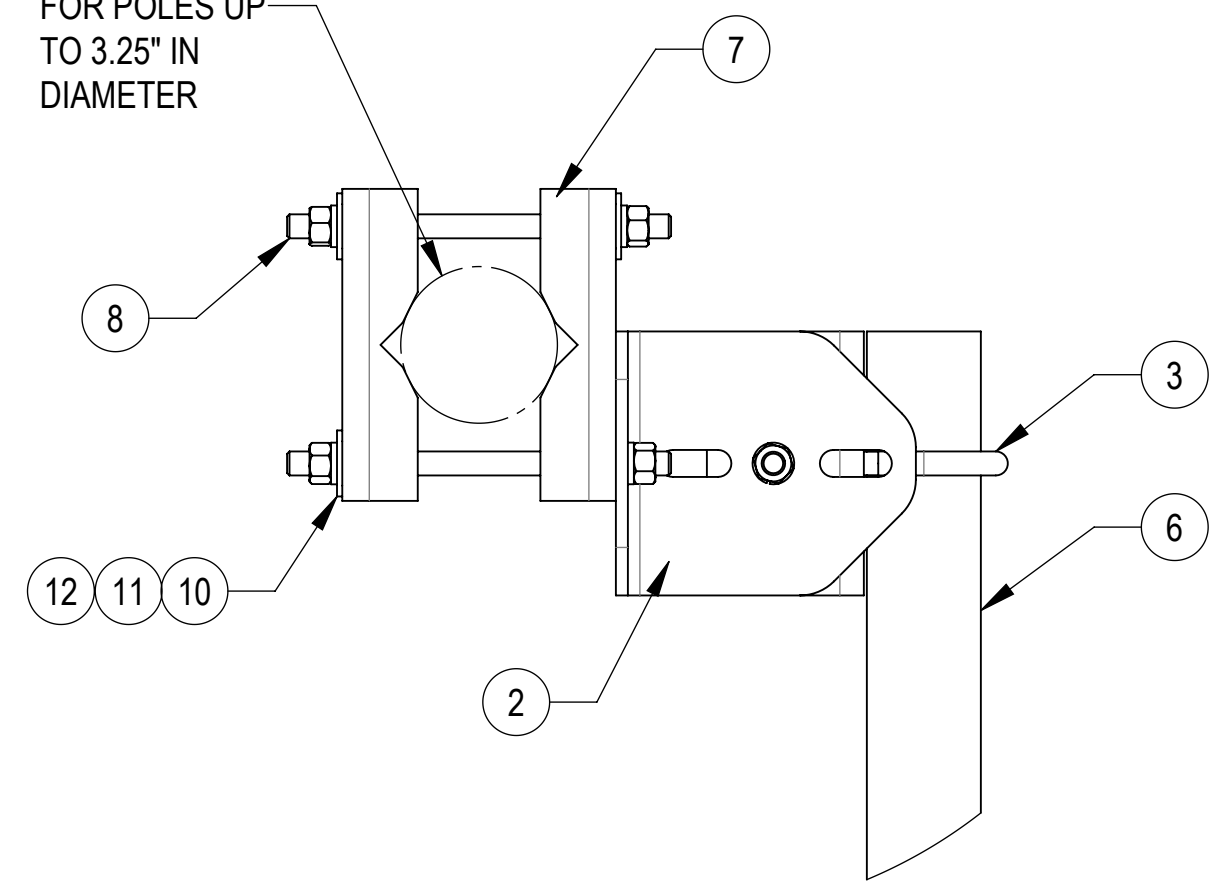
1



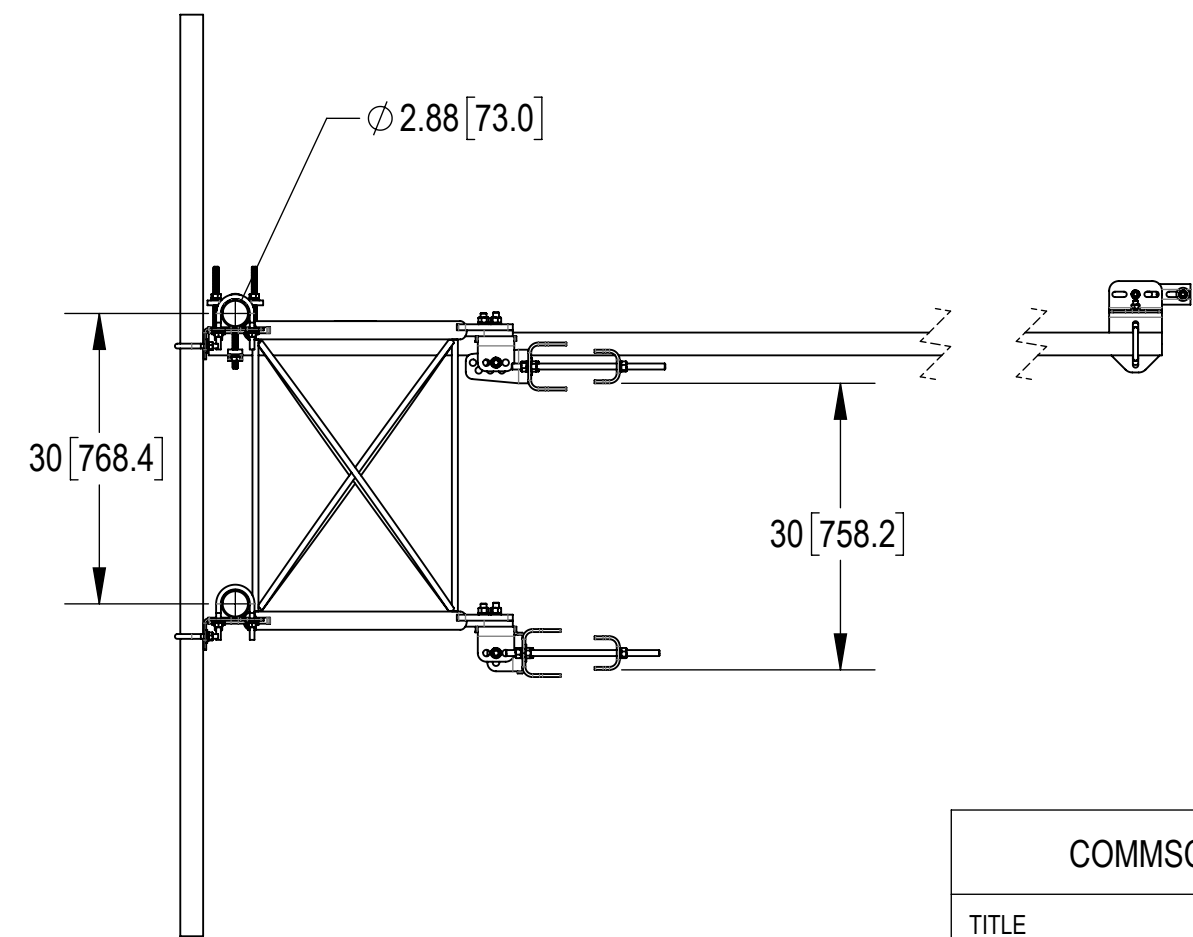
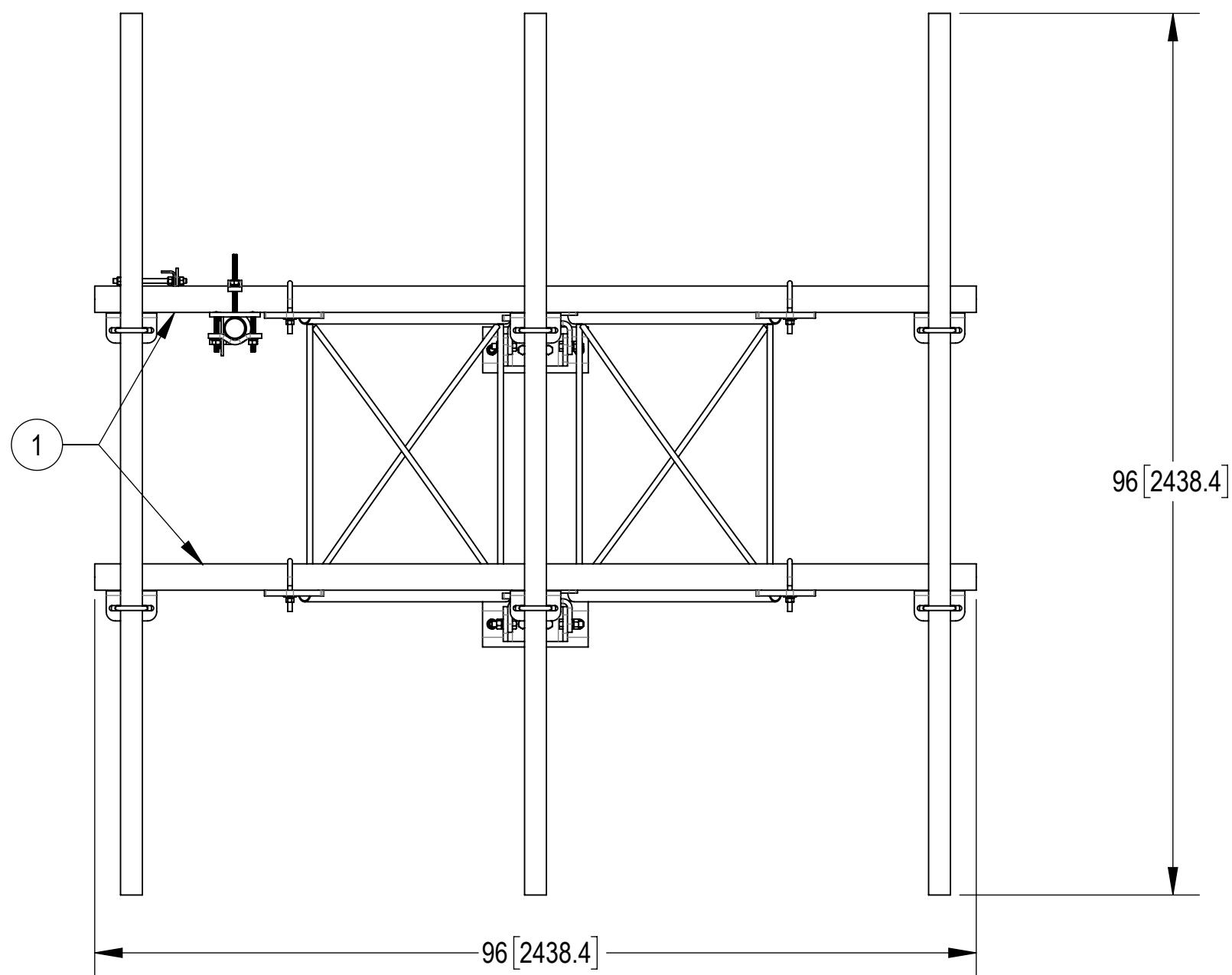
ALLOWABLE TIEBACK ANGLE
 ± 15 DEGREES VERTICAL
 ± 25 DEGREES HORIZONTAL



FOR POLES UP
 TO 3.25" IN
 DIAMETER



DETAIL B
 SCALE 1 : 4



COMMSCOPE, INC. OF NORTH CAROLINA				
TITLE SF,8FT-FACE,(3) 2-3/8"X96"ANT-PIPES				
SIZE C	SCALE 1:20	DOCUMENT NO. SFG21HD-8-3-96		
DRAWING		VERSION	STATUS	REVISION
SHEET		03	RE	D
3 OF 3				

4

3

2

1