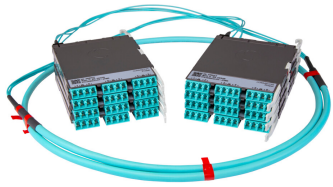


# PPLU3GDLCLCH



Propel ULL Singlemode Cabled Module, 4x12 duplex LC Propel module on End A to 4x12 on End B, 48 fiber B2ca Trunk, Method B Enhanced

- This component requires 3 of the 12 lanes on the Propel Panel blade
- Ultra-low loss (ULL) with Method B Enhanced polarity
- End A module can be installed from rear of panel
- Serialized QR code provides easy access to factory optical test results

## Product Classification

<b>Regional Availability</b>	Asia   Australia/New Zealand   EMEA   Latin America   North America
<b>Portfolio</b>	SYSTIMAX®
<b>Product Type</b>	Fiber cabled module
<b>Product Brand</b>	Propel
<b>Product Series</b>	PPL
<b>Ordering Note</b>	End B module is the same module as End A   For lengths greater than 999 ft (304 m), orders must be in meters   Maximum length is 400 meters

## General Specifications

<b>Configuration Type</b>	PROPEL Module to PROPEL Module
<b>Cable Color</b>	Yellow
<b>Cable Type</b>	Trunk Cable - LSZH Class B2ca
<b>Interface, front</b>	LC/UPC
<b>Interface Feature, front</b>	Duplex   Shuttered
<b>Interface Color, front</b>	Blue
<b>Interface, rear</b>	LC/UPC
<b>Interface Feature, rear</b>	Duplex   Shuttered
<b>Interface Color, rear</b>	Blue
<b>Module Size, end A</b>	12 fiber
<b>Module Size, end B</b>	12 fiber
<b>Module Quantity, end A</b>	4
<b>Module Quantity, end B</b>	4
<b>Polarity</b>	Method B Enhanced (ULL)
<b>Total Fibers, quantity</b>	48

# PPLU3GDLCLCH

**Total Ports, quantity, front** 24

**Total Ports, quantity, rear** 24

## Dimensions

**Height** 11 mm | 0.433 in

**Width** 98 mm | 3.858 in

**Depth** 170 mm | 6.693 in

**Breakout Length, end B** 23 in

**Cable Assembly Length Range (m)** 1 – 400

**Cable Assembly Length Range (ft)** 2 – 999

## Ordering Tree



## Optical Specifications

**Fiber Mode** Singlemode

**Fiber Type** OS2

**Insertion Loss, maximum** 0.6 dB

## Environmental Specifications

**Qualification Standards** IEC 61753-1 | TIA-568.3-D

**Safety Standard** c-UL-us

## Packaging and Weights

**Packaging quantity** 1

## Regulatory Compliance/Certifications

**Agency** **Classification**

# PPLU3GDLCLCH

---

CHINA-ROHS	Above maximum concentration value
ROHS	Compliant/Exempted
UK-ROHS	Compliant/Exempted



## Included Products

760249608 N-048-MP-8G1-F12YL/20T/B2	-	Fiber indoor cable, Low Smoke Zero Halogen Riser MPO Trunk, 48 fiber with 2.0 mm Subunits, Singlemode G.657.A2/B2, Feet jacket marking, Yellow jacket color, B2ca flame rating
--	---	--