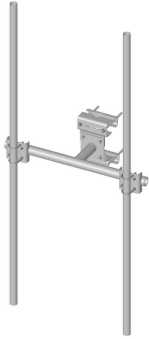


SF-DPM3-126



Co-location Dual Pipe Mount Kit; includes (2) 2-7/8 in OD x 126 in pipes

Product Classification

Product Type Co-location dual pipe mount kit

General Specifications

Mounting Angle 60°, 203.2 mm (8 in) | Angle 90°, 152.4 mm (6 in) | Straight or tapered legs up to 203.2 mm (8 in) OD

Note Two 72 in x 8 in panel antenna per sector

Pipe, quantity 2

Tower Taper Non-tapered | Tapered

Dimensions

Height 126 in | 3,200.4 mm

Face Width 4.8 ft | 1.463 m

Width 57 in | 1,447.8 mm

Length 1.3 ft | 0.396 m

Pipe Length 126 in | 3,200.4 mm

Face Support Pipe Diameter 3.5 in | 88.9 mm

Mounting Diameter, maximum 8 in | 203.2 mm

Mounting Diameter, minimum 0 in | 0 mm

Pipe Outer Diameter 2.9 in | 73.66 mm

Stand-off Distance 15.4 in | 391.16 mm

Material Specifications

Material Type Hot dip galvanized steel

Mechanical Specifications

SF-DPM3-126

Wind Rating	120 mph (BWS) at 150 ft AGL 140 mph (3-second gust) at 150 ft AGL using Exposure D per FBC
Wind Rating Test Method	TIA/EIA-222

Packaging and Weights

Included	Clamps Frame Pipe mounts Pipes Saddle mounts
Packaging quantity	1
Weight, net	152.2 kg 335.543 lb

Regulatory Compliance/Certifications

Agency	Classification
ISO 9001:2015	Designed, manufactured and/or distributed under this quality management system



* Footnotes

Wind Rating	BWS—Base Wind Speed; FBC—Florida Building Code
--------------------	--