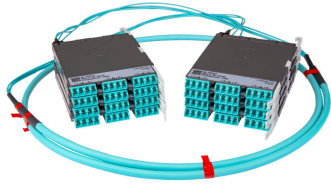


PPLUGG8LCLCR



Propel ULL Singlemode Cabled Module, 2x8 duplex LC Propel module on End A to 2x8 on End B, 16 fiber Plenum Trunk, Method B Enhanced

- This component requires 2 of the 12 lanes on the Propel Panel blade
- Ultra-low loss (ULL) with Method B Enhanced polarity
- End A module can be installed from rear of panel
- Serialized QR code provides easy access to factory optical test results

Product Classification

| | |
|------------------------------|---|
| Regional Availability | Asia Australia/New Zealand EMEA Latin America North America |
| Portfolio | SYSTIMAX® |
| Product Type | Fiber cabled module |
| Product Brand | Propel |
| Product Series | PPL |
| Ordering Note | End B module is the same module as End A For lengths greater than 999 ft (304 m), orders must be in meters Maximum length is 400 meters |

General Specifications

| | |
|---------------------------------|--------------------------------|
| Configuration Type | PROPEL Module to PROPEL Module |
| Cable Color | Yellow |
| Cable Type | Trunk Cable - Plenum |
| Interface, front | LC/UPC |
| Interface Feature, front | Duplex Shuttered |
| Interface Color, front | Blue |
| Interface, rear | LC/UPC |
| Interface Feature, rear | Duplex Shuttered |
| Interface Color, rear | Blue |
| Module Size, end A | 8 fiber |
| Module Size, end B | 8 fiber |
| Module Quantity, end A | 2 |
| Module Quantity, end B | 2 |
| Polarity | Method B Enhanced (ULL) |
| Total Fibers, quantity | 16 |

PPLUGG8LCLCR

| | |
|-------------------------------------|---|
| Total Ports, quantity, front | 8 |
| Total Ports, quantity, rear | 8 |

Dimensions

| | |
|---|-------------------|
| Height | 11 mm 0.433 in |
| Width | 65 mm 2.559 in |
| Depth | 170 mm 6.693 in |
| Breakout Length, end B | 23 in |
| Cable Assembly Length Range (m) | 1 – 400 |
| Cable Assembly Length Range (ft) | 2 – 999 |

Ordering Tree



Optical Specifications

| | |
|--------------------------------|------------|
| Fiber Mode | Singlemode |
| Fiber Type | OS2 |
| Insertion Loss, maximum | 0.6 dB |

Environmental Specifications

| | |
|--------------------------------|---------------------------|
| Qualification Standards | IEC 61753-1 TIA-568.3-D |
| Safety Standard | c-UL-us |

Packaging and Weights

| | |
|---------------------------|---|
| Packaging quantity | 1 |
|---------------------------|---|

Regulatory Compliance/Certifications

| | |
|---------------|-----------------------|
| Agency | Classification |
|---------------|-----------------------|

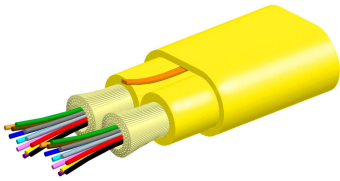
PPLUGG8LCLCR

| | |
|------------|-----------------------------------|
| CHINA-ROHS | Above maximum concentration value |
| ROHS | Compliant/Exempted |
| UK-ROHS | Compliant/Exempted |



Included Products

| | | |
|-------------------------------------|---|--|
| 760245563 P-016-MP-8G1-F08YL/20T | - | Fiber indoor cable, Plenum MPO Trunk, 16 fiber with 8 fiber subunits, Singlemode G.657.A2/B2, Feet jacket marking, Yellow jacket color |
|-------------------------------------|---|--|



Fiber indoor cable, Plenum MPO Trunk, 16 fiber with 8 fiber subunits, Singlemode G.657.A2/B2, Feet jacket marking, Yellow jacket color

Product Classification

| | |
|------------------------------|--|
| Regional Availability | Asia Australia/New Zealand Latin America Middle East /Africa North America |
| Portfolio | CommScope® |
| Product Type | Fiber indoor cable |
| Product Series | P-MP |

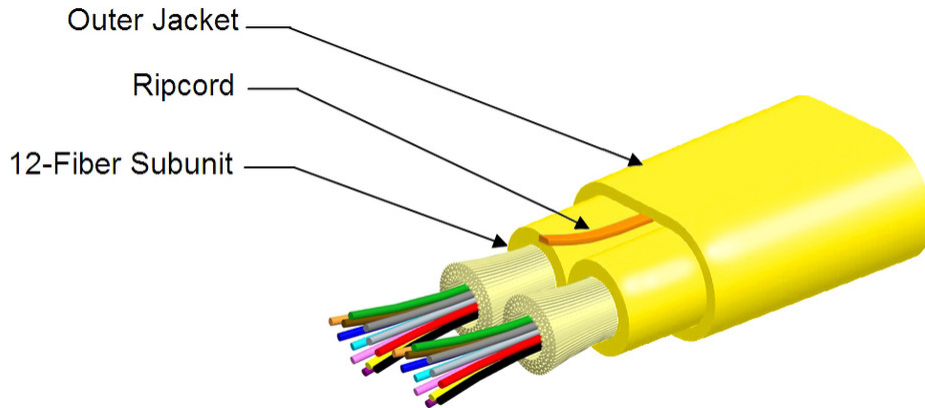
General Specifications

| | |
|-------------------------------------|-----------------|
| Cable Type | MPO trunk cable |
| Construction Type | Non-armored |
| Subunit Type | Gel-free |
| Jacket Color | Yellow |
| Jacket Marking | Feet |
| Subunit, quantity | 2 |
| Fibers per Subunit, quantity | 8 |
| Total Fiber Count | 16 |

Dimensions

| | |
|-------------------------------------|--------------------|
| Height Over Jacket | 5.4 mm 0.213 in |
| Width Over Jacket | 7.15 mm 0.281 in |
| Buffer Tube/Subunit Diameter | 2 mm 0.079 in |

Representative Image



Mechanical Specifications

| | |
|--|---------------------------------------|
| Minimum Bend Radius, loaded | 81 mm 3.189 in |
| Minimum Bend Radius, unloaded | 54 mm 2.126 in |
| Tensile Load, long term, maximum | 200 N 44.962 lbf |
| Tensile Load, short term, maximum | 667 N 149.948 lbf |
| Compression | 10 N/mm 57.101 lb/in |
| Compression Test Method | FOTP-41 IEC 60794-1 E3 |
| Flex | 300 cycles |
| Flex Test Method | FOTP-104 IEC 60794-1 E6 |
| Impact | 0.74 N-m 6.55 in lb |
| Impact Test Method | FOTP-25 IEC 60794-1 E4 |
| Strain | See long and short term tensile loads |
| Strain Test Method | FOTP-33 IEC 60794-1 E1 |
| Twist | 10 cycles |
| Twist Test Method | FOTP-85 IEC 60794-1 E7 |
| Vertical Rise, maximum | 440 m 1,443.57 ft |

Optical Specifications

| | |
|-------------------|---------------------------|
| Fiber Type | G.657.A2/B2 G.657.A2/B2 |
|-------------------|---------------------------|

Environmental Specifications

| | |
|---------------------------------|------------------------------------|
| Installation temperature | 0 °C to +70 °C (+32 °F to +158 °F) |
|---------------------------------|------------------------------------|

| | |
|--------------------------------------|---------------------------------------|
| Operating Temperature | 0 °C to +70 °C (+32 °F to +158 °F) |
| Storage Temperature | -40 °C to +70 °C (-40 °F to +158 °F) |
| Cable Qualification Standards | ANSI/ICEA S-83-596 Telcordia GR-409 |
| Environmental Space | Plenum |
| Flame Test Listing | NEC OFNP (ETL) and c(ETL) |
| Flame Test Method | NFPA 130 NFPA 262 |

Environmental Test Specifications

| | |
|--------------------------------------|------------------------------------|
| Heat Age | 0 °C to +85 °C (+32 °F to +185 °F) |
| Heat Age Test Method | IEC 60794-1 F9 |
| Low High Bend | 0 °C to +70 °C (+32 °F to +158 °F) |
| Low High Bend Test Method | FOTP-37 IEC 60794-1 E11 |
| Temperature Cycle | 0 °C to +70 °C (+32 °F to +158 °F) |
| Temperature Cycle Test Method | FOTP-3 IEC 60794-1 F1 |

Packaging and Weights

| | |
|---------------------|----------------------------|
| Cable weight | 46.4 kg/km 31.179 lb/kft |
|---------------------|----------------------------|

Regulatory Compliance/Certifications

| Agency | Classification |
|---------------|--|
| ISO 9001:2015 | Designed, manufactured and/or distributed under this quality management system |

* Footnotes

Operating Temperature Specification applicable to non-terminated bulk fiber cable