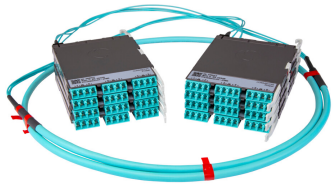


# PPLUGGFLCLCH



Propel ULL Singlemode Cabled Module, 2x2f duplex LC Propel module on End A to 2x24 on End B, 48 fiber Plenum Trunk, Method B Enhanced

- This component requires 6 of the 12 lanes on the Propel Panel blade
- Ultra-low loss (ULL) with Method B Enhanced polarity
- End A module can be installed from rear of panel
- Serialized QR code provides easy access to factory optical test results

## Product Classification

<b>Regional Availability</b>	Asia   Australia/New Zealand   EMEA   Latin America   North America
<b>Portfolio</b>	SYSTIMAX®
<b>Product Type</b>	Fiber cabled module
<b>Product Brand</b>	Propel
<b>Product Series</b>	PPL
<b>Ordering Note</b>	End B module is the same module as End A   For lengths greater than 999 ft (304 m), orders must be in meters   Maximum length is 400 meters

## General Specifications

<b>Configuration Type</b>	PROPEL Module to PROPEL Module
<b>Cable Color</b>	Yellow
<b>Cable Type</b>	Trunk Cable - Plenum
<b>Interface, front</b>	LC/UPC
<b>Interface Feature, front</b>	Duplex   Shuttered
<b>Interface Color, front</b>	Blue
<b>Interface, rear</b>	LC/UPC
<b>Interface Feature, rear</b>	Duplex   Shuttered
<b>Interface Color, rear</b>	Blue
<b>Module Size, end A</b>	24 fiber
<b>Module Size, end B</b>	24 fiber
<b>Module Quantity, end A</b>	2
<b>Module Quantity, end B</b>	2
<b>Polarity</b>	Method B Enhanced (ULL)
<b>Total Fibers, quantity</b>	48

# PPLUGGFLCLCH

**Total Ports, quantity, front** 24

**Total Ports, quantity, rear** 24

## Dimensions

**Height** 11 mm | 0.433 in

**Width** 196 mm | 7.717 in

**Depth** 170 mm | 6.693 in

**Breakout Length, end B** 23 in

**Cable Assembly Length Range (m)** 1 – 400

**Cable Assembly Length Range (ft)** 2 – 999

## Ordering Tree



## Optical Specifications

**Fiber Mode** Singlemode

**Fiber Type** OS2

**Insertion Loss, maximum** 0.6 dB

## Environmental Specifications

**Qualification Standards** IEC 61753-1 | TIA-568.3-D

**Safety Standard** c-UL-us

## Packaging and Weights

**Packaging quantity** 1

## Regulatory Compliance/Certifications

**Agency** **Classification**

# PPLUGGFLCLCH

---

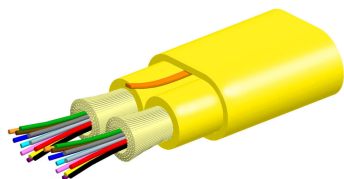
CHINA-ROHS	Above maximum concentration value
ROHS	Compliant/Exempted
UK-ROHS	Compliant/Exempted



## Included Products

760240267 - Plenum MPO Trunk Cable, 48 fiber with 24 fiber subunits  
P-048-MP-8G-F24YL

Plenum MPO Trunk Cable, 48 fiber with 24 fiber subunits



## Product Classification

<b>Regional Availability</b>	Asia   Australia/New Zealand   Latin America   Middle East /Africa   North America
<b>Portfolio</b>	CommScope®
<b>Product Type</b>	Fiber indoor cable
<b>Product Series</b>	P-MP

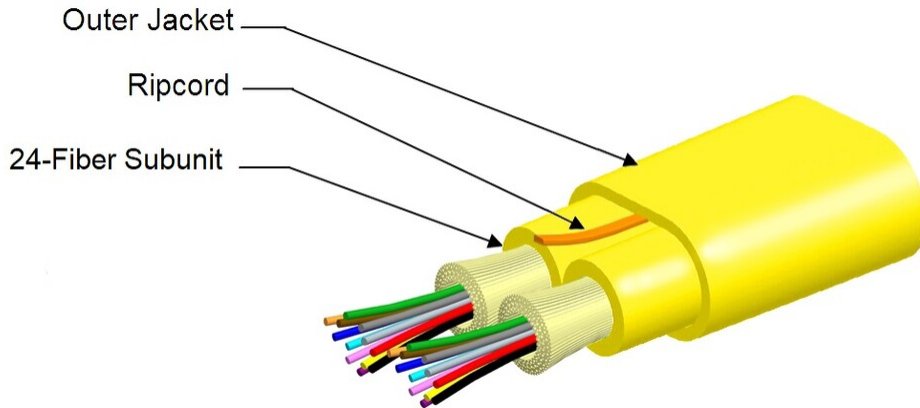
## General Specifications

<b>Cable Type</b>	MPO trunk cable
<b>Construction Type</b>	Non-armored
<b>Subunit Type</b>	Gel-free
<b>Jacket Color</b>	Yellow
<b>Jacket Marking</b>	Feet
<b>Subunit, quantity</b>	2
<b>Fibers per Subunit, quantity</b>	24
<b>Total Fiber Count</b>	48

## Dimensions

<b>Height Over Jacket</b>	4.47 mm   0.176 in
<b>Width Over Jacket</b>	8.08 mm   0.318 in
<b>Buffer Tube/Subunit Diameter</b>	3.6 mm   0.142 in

## Representative Image



## Mechanical Specifications

<b>Minimum Bend Radius, loaded</b>	67 mm   2.638 in
<b>Minimum Bend Radius, unloaded</b>	45 mm   1.772 in
<b>Tensile Load, long term, maximum</b>	240 N   53.954 lbf
<b>Tensile Load, short term, maximum</b>	801 N   180.072 lbf
<b>Compression</b>	10 N/mm   57.101 lb/in
<b>Compression Test Method</b>	FOTP-41   IEC 60794-1 E3
<b>Flex</b>	300 cycles
<b>Flex Test Method</b>	FOTP-104   IEC 60794-1 E6
<b>Impact</b>	0.74 N-m   6.55 in lb
<b>Impact Test Method</b>	FOTP-25   IEC 60794-1 E4
<b>Strain</b>	See long and short term tensile loads
<b>Strain Test Method</b>	FOTP-33   IEC 60794-1 E1
<b>Twist</b>	10 cycles
<b>Twist Test Method</b>	FOTP-85   IEC 60794-1 E7
<b>Vertical Rise, maximum</b>	500 m   1,640.42 ft

## Optical Specifications

<b>Fiber Type</b>	G.657.A2/B2   G.657.A2/B2
-------------------	---------------------------

## Environmental Specifications

<b>Installation temperature</b>	0 °C to +70 °C (+32 °F to +158 °F)
---------------------------------	------------------------------------

<b>Operating Temperature</b>	0 °C to +70 °C (+32 °F to +158 °F)
<b>Storage Temperature</b>	-40 °C to +70 °C (-40 °F to +158 °F)
<b>Cable Qualification Standards</b>	ANSI/ICEA S-83-596   Telcordia GR-409
<b>Environmental Space</b>	Plenum
<b>Flame Test Listing</b>	NEC OFNP (ETL) and c(ETL)
<b>Flame Test Method</b>	NFPA 130   NFPA 262

## Environmental Test Specifications

<b>Heat Age</b>	0 °C to +85 °C (+32 °F to +185 °F)
<b>Heat Age Test Method</b>	IEC 60794-1 F9
<b>Low High Bend</b>	0 °C to +70 °C (+32 °F to +158 °F)
<b>Low High Bend Test Method</b>	FOTP-37   IEC 60794-1 E11
<b>Temperature Cycle</b>	0 °C to +70 °C (+32 °F to +158 °F)
<b>Temperature Cycle Test Method</b>	FOTP-3   IEC 60794-1 F1

## Packaging and Weights

<b>Cable weight</b>	38 kg/km   25.535 lb/kft
---------------------	--------------------------

## Regulatory Compliance/Certifications

<b>Agency</b>	<b>Classification</b>
CHINA-ROHS	Below maximum concentration value
ISO 9001:2015	Designed, manufactured and/or distributed under this quality management system
REACH-SVHC	Compliant as per SVHC revision on <a href="http://www.commscope.com/ProductCompliance">www.commscope.com/ProductCompliance</a>
ROHS	Compliant
UK-ROHS	Compliant



## \* Footnotes

**Operating Temperature** Specification applicable to non-terminated bulk fiber cable