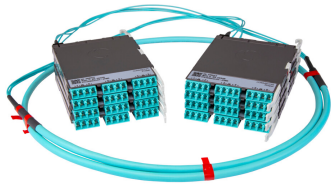


# PPLUGVFLCLCL



Propel ULL Multimode OM5 Cabled Module, 4x2f duplex LC Propel module on End A to 4x24 on End B, 96 fiber Plenum Trunk, Method B Enhanced

- This component requires 6 of the 12 lanes on the Propel Panel blade
- Ultra-low loss (ULL) with Method B Enhanced polarity
- End A module can be installed from rear of panel
- Serialized QR code provides easy access to factory optical test results

## Product Classification

<b>Regional Availability</b>	Asia   Australia/New Zealand   EMEA   Latin America   North America
<b>Portfolio</b>	SYSTIMAX®
<b>Product Type</b>	Fiber cabled module
<b>Product Brand</b>	Propel
<b>Product Series</b>	PPL
<b>Ordering Note</b>	End B module is the same module as End A   For lengths greater than 999 ft (304 m), orders must be in meters   Maximum length is 400 meters

## General Specifications

<b>Configuration Type</b>	PROPEL Module to PROPEL Module
<b>Cable Color</b>	Lime green
<b>Cable Type</b>	Trunk Cable - Plenum
<b>Interface, front</b>	LC/UPC
<b>Interface Feature, front</b>	Duplex   Shuttered
<b>Interface Color, front</b>	Lime green
<b>Interface, rear</b>	LC/UPC
<b>Interface Feature, rear</b>	Duplex   Shuttered
<b>Interface Color, rear</b>	Lime green
<b>Module Size, end A</b>	24 fiber
<b>Module Size, end B</b>	24 fiber
<b>Module Quantity, end A</b>	4
<b>Module Quantity, end B</b>	4
<b>Polarity</b>	Method B Enhanced (ULL)

# PPLUGVFLCLCL

<b>Total Fibers, quantity</b>	96
<b>Total Ports, quantity, front</b>	48
<b>Total Ports, quantity, rear</b>	48

## Dimensions

<b>Height</b>	11 mm   0.433 in
<b>Width</b>	131 mm   5.157 in
<b>Depth</b>	170 mm   6.693 in
<b>Breakout Length, end B</b>	23 in
<b>Cable Assembly Length Range (m)</b>	1 – 400
<b>Cable Assembly Length Range (ft)</b>	2 – 999

## Ordering Tree



## Optical Specifications

<b>Fiber Mode</b>	Multimode
<b>Fiber Type</b>	OM5
<b>Insertion Loss, maximum</b>	0.35 dB

## Environmental Specifications

<b>Qualification Standards</b>	IEC 61753-1   TIA-568.3-D
<b>Safety Standard</b>	c-UL-us

## Packaging and Weights

<b>Packaging quantity</b>	1
---------------------------	---

## Regulatory Compliance/Certifications

# PPLUGVFLCLCL

---

Agency	Classification
CHINA-ROHS	Above maximum concentration value
ROHS	Compliant/Exempted
UK-ROHS	Compliant/Exempted



## Included Products

- 760235979  
P-096-MP-5G-F24LM - Fiber indoor cable, LazrSPEED® Plenum MPO Trunk, 96 fiber multi-unit with 24 fiber subunits, Multimode OM5, Gel-free, Feet jacket marking, Lime green jacket color

# 760235979 | P-096-MP-5G-F24LM

---



Fiber indoor cable, LazrSPEED® Plenum MPO Trunk, 96 fiber multi-unit with 24 fiber subunits, Multimode OM5, Gel-free, Feet jacket marking, Lime green jacket color

## Product Classification

<b>Regional Availability</b>	Asia   Australia/New Zealand   Latin America   Middle East /Africa   North America
<b>Portfolio</b>	CommScope®
<b>Product Type</b>	Fiber indoor cable
<b>Product Series</b>	P-MP

## General Specifications

<b>Cable Type</b>	MPO trunk cable
<b>Construction Type</b>	Non-armored
<b>Subunit Type</b>	Gel-free
<b>Jacket Color</b>	Lime green
<b>Jacket Marking</b>	Feet
<b>Subunit, quantity</b>	4
<b>Fibers per Subunit, quantity</b>	24
<b>Total Fiber Count</b>	96

## Dimensions

<b>Buffer Tube/Subunit Diameter</b>	3.6 mm   0.142 in
<b>Diameter Over Jacket</b>	9.1 mm   0.358 in

## Representative Image



## Mechanical Specifications

<b>Minimum Bend Radius, loaded</b>	154 mm   6.063 in
<b>Minimum Bend Radius, unloaded</b>	102 mm   4.016 in
<b>Tensile Load, long term, maximum</b>	400 N   89.924 lbf
<b>Tensile Load, short term, maximum</b>	1335 N   300.12 lbf
<b>Compression</b>	10 N/mm   57.101 lb/in
<b>Compression Test Method</b>	FOTP-41   IEC 60794-1 E3
<b>Flex</b>	300 cycles
<b>Flex Test Method</b>	FOTP-104   IEC 60794-1 E6
<b>Impact</b>	0.74 N-m   6.55 in lb
<b>Impact Test Method</b>	FOTP-25   IEC 60794-1 E4
<b>Strain</b>	See long and short term tensile loads
<b>Strain Test Method</b>	FOTP-33   IEC 60794-1 E1
<b>Twist</b>	10 cycles
<b>Twist Test Method</b>	FOTP-85   IEC 60794-1 E7
<b>Vertical Rise, maximum</b>	429 m   1,407.48 ft

## Optical Specifications

<b>Fiber Type</b>	OM5, LazrSPEED® wideband   OM5, LazrSPEED® wideband
-------------------	---

## Environmental Specifications

<b>Installation temperature</b>	0 °C to +70 °C (+32 °F to +158 °F)
<b>Operating Temperature</b>	0 °C to +70 °C (+32 °F to +158 °F)

# 760235979 | P-096-MP-5G-F24LM

<b>Storage Temperature</b>	-40 °C to +70 °C (-40 °F to +158 °F)
<b>Cable Qualification Standards</b>	ANSI/ICEA S-83-596   Telcordia GR-409
<b>Environmental Space</b>	Plenum
<b>Flame Test Listing</b>	NEC OFNP (ETL) and c(ETL)
<b>Flame Test Method</b>	NFPA 130   NFPA 262

## Environmental Test Specifications

<b>Heat Age</b>	0 °C to +85 °C (+32 °F to +185 °F)
<b>Heat Age Test Method</b>	IEC 60794-1 F9
<b>Low High Bend</b>	0 °C to +70 °C (+32 °F to +158 °F)
<b>Low High Bend Test Method</b>	FOTP-37   IEC 60794-1 E11
<b>Temperature Cycle</b>	0 °C to +70 °C (+32 °F to +158 °F)
<b>Temperature Cycle Test Method</b>	FOTP-3   IEC 60794-1 F1

## Packaging and Weights

<b>Cable weight</b>	95 kg/km   63.837 lb/kft
---------------------	--------------------------

## Regulatory Compliance/Certifications

<b>Agency</b>	<b>Classification</b>
CHINA-ROHS	Below maximum concentration value
ISO 9001:2015	Designed, manufactured and/or distributed under this quality management system
REACH-SVHC	Compliant as per SVHC revision on <a href="http://www.commscope.com/ProductCompliance">www.commscope.com/ProductCompliance</a>
ROHS	Compliant
UK-ROHS	Compliant



## \* Footnotes

**Operating Temperature** Specification applicable to non-terminated bulk fiber cable