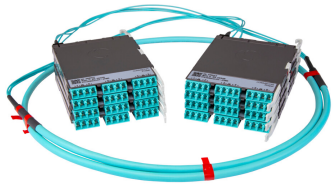


PPLUJG8LCLC8



Propel ULL Singlemode Cabled Module, 1x8 duplex LC Propel module on End A to 1x8 on End B, 8 fiber LSZH Trunk, Method B Enhanced

- This component requires 2 of the 12 lanes on the Propel Panel blade
- Ultra-low loss (ULL) with Method B Enhanced polarity
- End A module can be installed from rear of panel
- Serialized QR code provides easy access to factory optical test results

Product Classification

Regional Availability	Asia Australia/New Zealand EMEA Latin America North America
Portfolio	SYSTIMAX®
Product Type	Fiber cabled module
Product Brand	Propel
Product Series	PPL
Ordering Note	End B module is the same module as End A For lengths greater than 999 ft (304 m), orders must be in meters Maximum length is 400 meters

General Specifications

Configuration Type	PROPEL Module to PROPEL Module
Cable Color	Yellow
Cable Type	Trunk Cable - LSZH
Interface, front	LC/UPC
Interface Feature, front	Duplex Shuttered
Interface Color, front	Blue
Interface, rear	LC/UPC
Interface Feature, rear	Duplex Shuttered
Interface Color, rear	Blue
Module Size, end A	8 fiber
Module Size, end B	8 fiber
Module Quantity, end A	1
Module Quantity, end B	1
Polarity	Method B Enhanced (ULL)
Total Fibers, quantity	8

PPLUJG8LCLC8

Total Ports, quantity, front 4

Total Ports, quantity, rear 4

Dimensions

Height 11 mm | 0.433 in

Width 65 mm | 2.559 in

Depth 170 mm | 6.693 in

Breakout Length, end B 23 in

Cable Assembly Length Range (m) 1 – 400

Cable Assembly Length Range (ft) 2 – 999

Ordering Tree



Optical Specifications

Fiber Mode Singlemode

Fiber Type OS2

Insertion Loss, maximum 0.6 dB

Environmental Specifications

Qualification Standards IEC 61753-1 | TIA-568.3-D

Safety Standard c-UL-us

Packaging and Weights

Packaging quantity 1

Regulatory Compliance/Certifications

Agency **Classification**

PPLUJG8LCLC8

CHINA-ROHS Above maximum concentration value

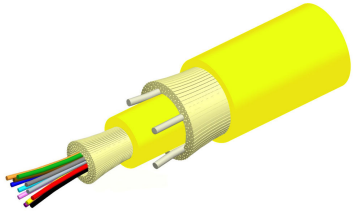
ROHS Compliant/Exempted

UK-ROHS Compliant



Included Products

760245569 N-008-MP-8G1-F08YL/20T/D – Fiber indoor cable, Low Smoke Zero Halogen Riser MPO Trunk with 2.0mm Subunits, 8 fiber, Singlemode G.657.A2/B2, Feet jacket marking, Yellow jacket color, Dca flame rating



Fiber indoor cable, Low Smoke Zero Halogen Riser MPO Trunk with 2.0 mm Subunits, 8 fiber, Singlemode G.657.A2/B2, Feet jacket marking, Yellow jacket color, Dca flame rating

Product Classification

Regional Availability	Asia Australia/New Zealand EMEA Latin America North America
Portfolio	CommScope®
Product Type	Fiber indoor cable
Product Series	N-MP

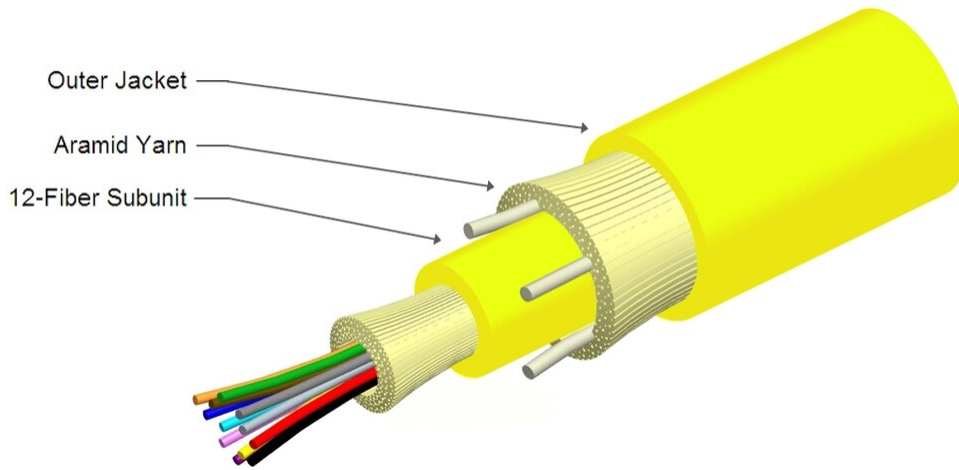
General Specifications

Cable Type	MPO trunk cable
Construction Type	Non-armored
Subunit Type	Gel-free
Jacket Color	Yellow
Jacket Marking	Feet
Total Fiber Count	8

Dimensions

Buffer Tube/Subunit Diameter	2 mm 0.079 in
Diameter Over Jacket	4.7 mm 0.185 in

Representative Image



Mechanical Specifications

Minimum Bend Radius, loaded	71 mm 2.795 in
Minimum Bend Radius, unloaded	47 mm 1.85 in
Tensile Load, long term, maximum	133 N 29.9 lbf
Tensile Load, short term, maximum	445 N 100.04 lbf
Compression	10 N/mm 57.101 lb/in
Compression Test Method	FOTP-41 IEC 60794-1 E3
Flex	300 cycles
Flex Test Method	FOTP-104 IEC 60794-1 E6
Impact	2.94 N-m 26.021 in lb
Impact Test Method	FOTP-25 IEC 60794-1 E4
Strain	See long and short term tensile loads
Strain Test Method	FOTP-33 IEC 60794-1 E1
Twist	10 cycles
Twist Test Method	FOTP-85 IEC 60794-1 E7
Vertical Rise, maximum	500 m 1,640.42 ft

Optical Specifications

Fiber Type	G.657.A2/B2 G.657.A2/B2
-------------------	---------------------------

Environmental Specifications

760245569 | N-008-MP-8G1-F08YL/20T/D

Installation temperature	0 °C to +60 °C (+32 °F to +140 °F)
Operating Temperature	0 °C to +70 °C (+32 °F to +158 °F)
Storage Temperature	-40 °C to +70 °C (-40 °F to +158 °F)
Cable Qualification Standards	ANSI/ICEA S-83-596 Telcordia GR-409
EN50575 CPR Cable EuroClass Fire Performance	Dca
EN50575 CPR Cable EuroClass Smoke Rating	s1a
EN50575 CPR Cable EuroClass Droplets Rating	d1
EN50575 CPR Cable EuroClass Acidity Rating	a1
Environmental Space	Low Smoke Zero Halogen (LSZH) Riser
Flame Test Listing	NEC OFNR-ST1 (ETL) and c(ETL)
Flame Test Method	IEC 60332-3 IEC 60754-2 IEC 61034-2 UL 1666 UL 1685

Environmental Test Specifications

Heat Age	0 °C to +85 °C (+32 °F to +185 °F)
Heat Age Test Method	IEC 60794-1 F9
Low High Bend	0 °C to +60 °C (+32 °F to +140 °F)
Low High Bend Test Method	FOTP-37 IEC 60794-1 E11
Temperature Cycle	0 °C to +70 °C (+32 °F to +158 °F)
Temperature Cycle Test Method	FOTP-3 IEC 60794-1 F1

Packaging and Weights

Cable weight	22.8 kg/km 15.321 lb/kft
---------------------	----------------------------

Regulatory Compliance/Certifications

Agency	Classification
CENELEC	EN 50575 compliant, Declaration of Performance (DoP) available
CHINA-ROHS	Below maximum concentration value
ISO 9001:2015	Designed, manufactured and/or distributed under this quality management system
REACH-SVHC	Compliant as per SVHC revision on www.commscope.com/ProductCompliance
ROHS	Compliant
UK-ROHS	Compliant



* Footnotes

Operating Temperature Specification applicable to non-terminated bulk fiber cable