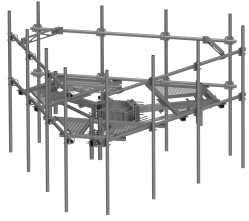


# MP-PP15M-12C-96

---



PIM Optimized Adjustable Monopole Platform with 15ft Face - 2-7/8in OD Face Pipes & Top Rail - Includes (12) 2-7/8in OD x 96in Antenna Pipes

## Product Classification

**Product Type** Co-location platform

## General Specifications

**Mounting** Monopole, 304.8–1143 mm (12–45 in) OD

**Pipe, quantity** 12

**Sectors, quantity** 3

## Dimensions

**Height** 2,438.4 mm | 96 in

**Face Width** 4,572 mm | 15 ft

**Width** 4,572 mm | 180 in

**Pipe Length** 2,438.4 mm | 96 in

**Face Support Pipe Diameter** 73.152 mm | 2.88 in

**Mounting Diameter, maximum** 1,143 mm | 45 in

**Mounting Diameter, minimum** 304.8 mm | 12 in

**Pipe Outer Diameter** 73.152 mm | 2.88 in

## Material Specifications

**Material Type** Hot dip galvanized steel

## Mechanical Specifications

**Wind Rating Test Method** TIA/EIA-222

## Packaging and Weights

# MP-PP15M-12C-96

---

<b>Included</b>	Plain end pipes (12)   Platform   Rail   Ring mount
<b>Packaging quantity</b>	1
<b>Weight, net</b>	1,276.046 kg   2,813.2 lb