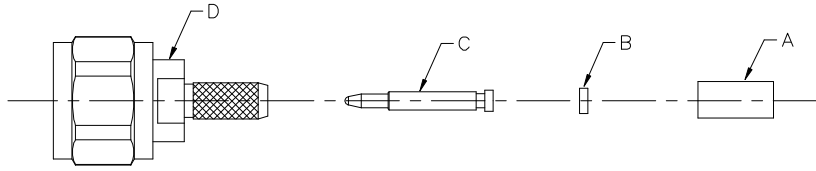


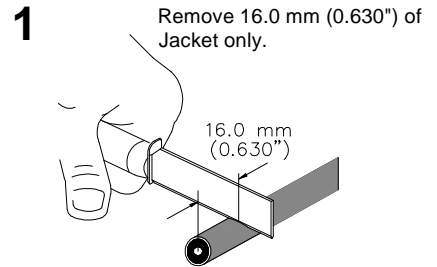
Installation Instructions

Connector Attachment

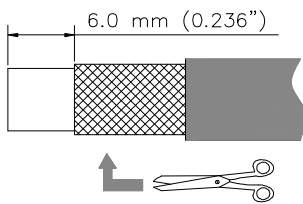
For Braided Cable RG142
N Male, Straight, Solder Pin,
Crimp-type Body: RG142TNM-CR



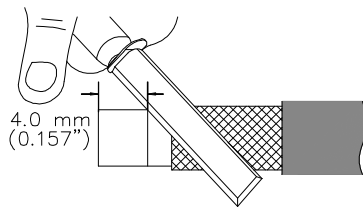
RG142TNM-CR



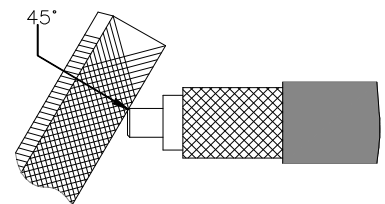
2 Trim 6.0 mm (0.236") of braid, exposing foil & foam.



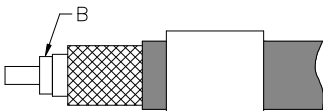
3 Remove 4.0 mm (0.157") of foil & foam, exposing center conductor.



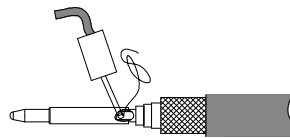
4 Chamfer the center conductor at a 45° angle.



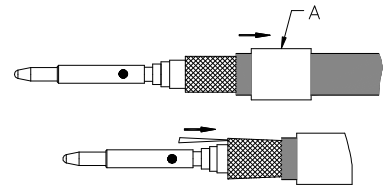
5 Slide disc B onto cable center conductor.



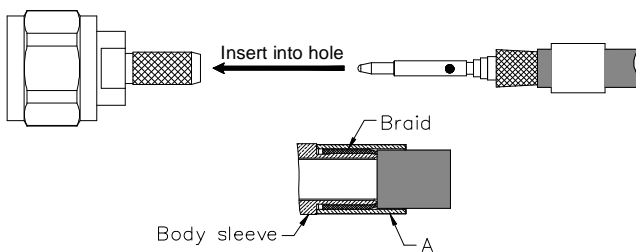
6 Solder Inner contact & cable center conductor together. Inspect soldering point, solder should fill cup but not spill over.



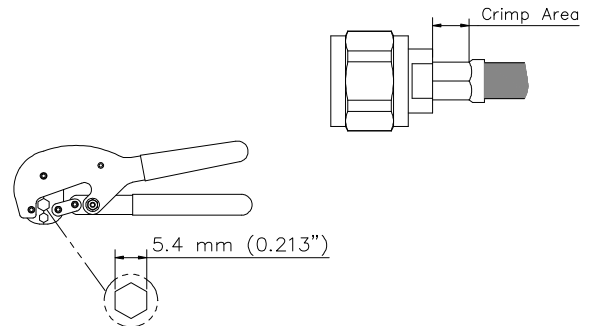
7 Slide part A onto cable, splay out braid as shown.



8 The cable attachment must be straight and aligned with the hole of connector inner contact. Insert cable attachment into connector body until stopped; the center conductor must be inserted into inner contact hole. Make sure the braid covers body sleeve and push part A onto braid.



9 Crimp the ferrule at the area as shown; Crimp tool part number is : CTBC-2.



	表一 有毒有害物质或元素名称及含量标识格式					
	有毒有害物质或元素					
部件名称 (Part Name)	铅 (Pb)	汞 (Hg)	镉 (Cd)	六价铬 (Cr6+)	多溴联苯 (PBB)	多溴二苯醚 (PBDE)
连接器 (Connector)	X	O	O	O	O	O

O: 表示有毒有害物质在该部件所有的均质材料中的含量均在 SJ/T 11363-2006规定的限量要求以下。
X: 表示该有毒有害物质至少在该部件的某一均质材料中的含量超出 SJ/T 11363-2006规定的限量要求。

Installation Training Available at Andrew Institute

Notice: Andrew disclaims any liability or responsibility for the results of improper or unsafe installation, inspection, maintenance, or removal practices



Andrew Wireless Solutions

3 Westbrook Corporate Center, Suite 900, Westchester, Illinois U.S.A. 60154
+1 (779) 435-8579 Fax (U.S.A.): 1-800-349-5444
www.andrew.com

Copyright © 2010 by Andrew Corporation

Customer Service, 24 hours

U.S.A., Canada, Mexico: 1-800-255-1479
U.K.: 0800 250055
Other Europe: +44 592 782 612
China: +86 512-6256-8805

