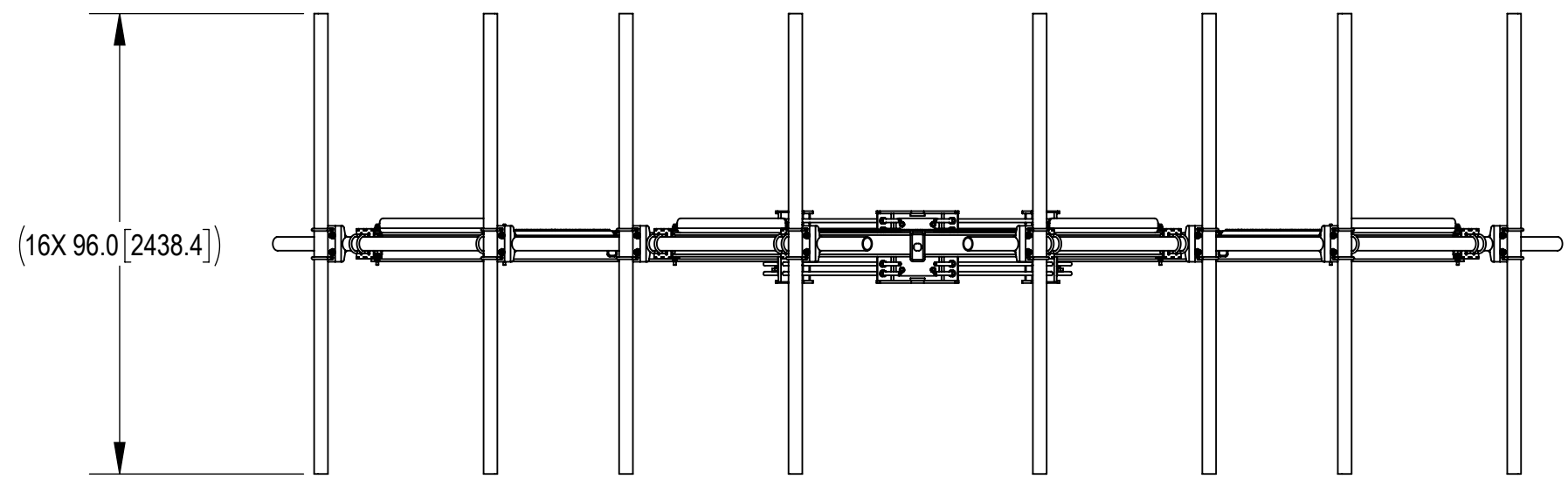
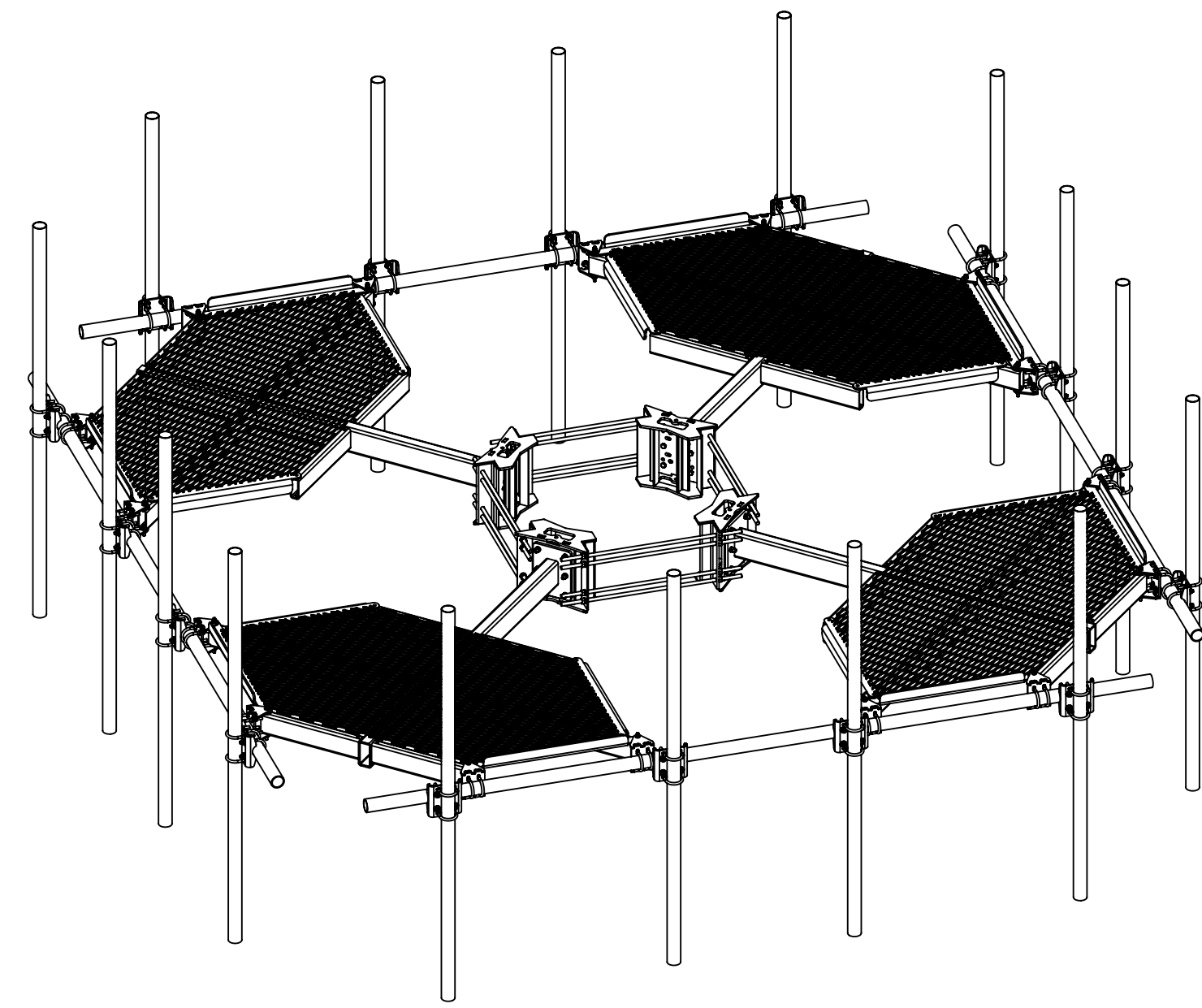
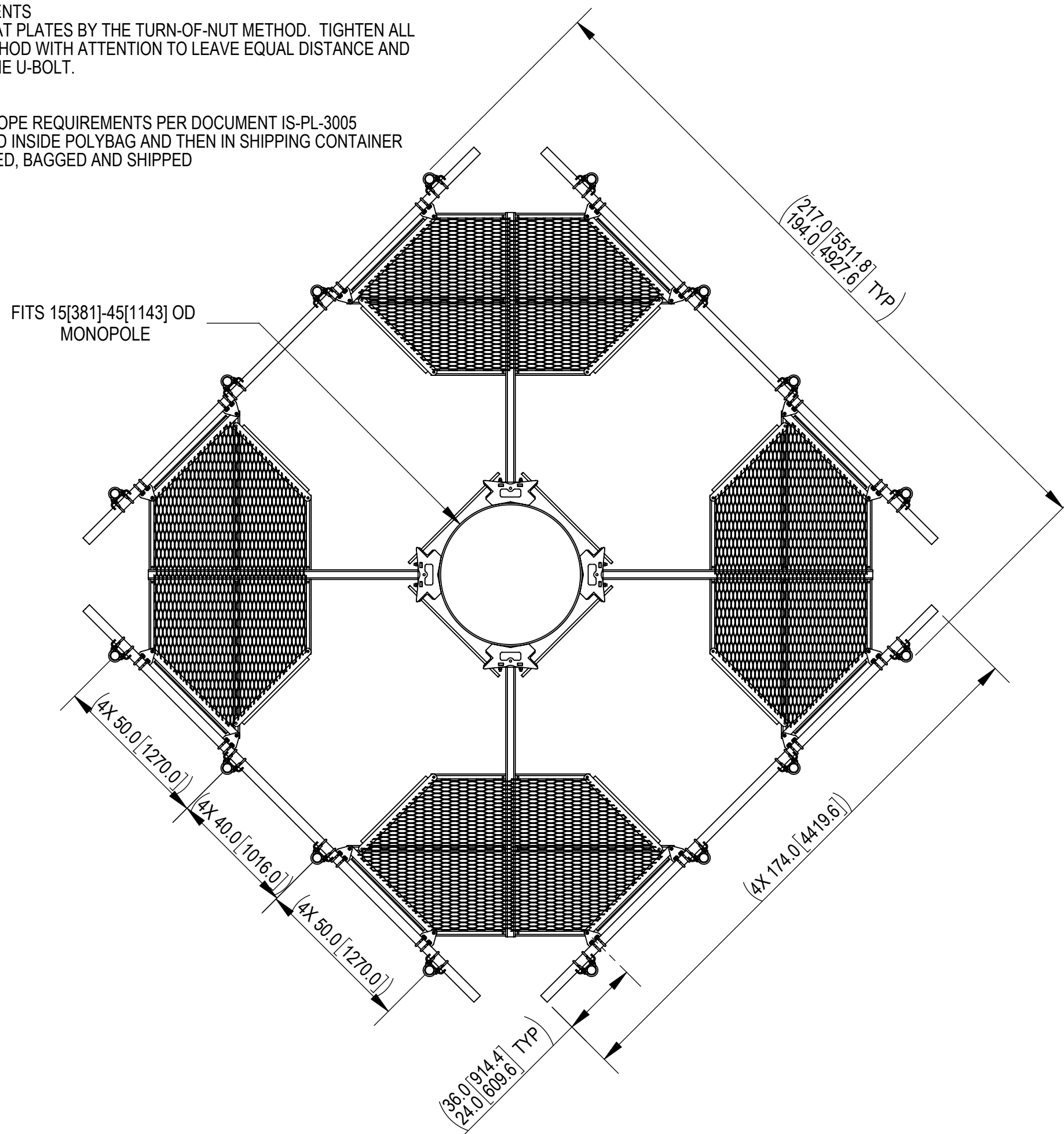


- 1.0 GENERAL NOTES
 1.1 ALL METRIC DIMENSIONS ARE IN BRACKETS [X.X]
 1.2 FOR PATENT INFO: <https://www.cs-pat.com>
 2.0 DESIGN NOTES
 2.1 USE DRAWING MC-RMHD-1545-4 TO ASSEMBLE RING MOUNT
 2.2 ANY HAZARDS OR OBSTRUCTIONS TO THE CLIMBING FACILITY AND SAFETY CLIMB MUST BE IDENTIFIED PRIOR TO INSTALLING THE APPURTENANCE. ADDITIONAL PRODUCTS MAY BE REQUIRED TO MAINTAIN THE INTEGRITY OF THE SAFETY CLIMB. DURING INSTALLATION, TEMPORARY AND/OR PERMANENT PRECAUTIONARY MEASURES SHOULD BE TAKEN TO PRESERVE THE CLIMBING FACILITY AND/OR SAFETY CLIMB.
 3.0 MANUFACTURING/SPECIAL REQUIREMENTS
 3.1 TIGHTEN ALL BOLTS SECURING FLAT PLATES BY THE TURN-OF-NUT METHOD. TIGHTEN ALL U-BOLTS USING TURN-OF-NUT METHOD WITH ATTENTION TO LEAVE EQUAL DISTANCE AND EQUAL FORCE ON EACH LEG OF THE U-BOLT.
 4.0 TEST
 5.0 PACKAGING
 5.1 PACKAGING SHALL MEET COMMSCOPE REQUIREMENTS PER DOCUMENT IS-PL-3005
 5.2 PRINTED DOCUMENT TO BE PLACED INSIDE POLYBAG AND THEN IN SHIPPING CONTAINER
 5.3 EXTRA HARDWARE MAYBE SUPPLIED, BAGGED AND SHIPPED

| REVISIONS | | | |
|-----------|--|----------------|--------------------|
| REV. | DESCRIPTION | DATE | APPROVED |
| A | INITIAL RELEASE | YMENG 19OCT21 | BCROSS 14658 |
| B | MCPM-2005-00 WAS MCPM-2000-00, MT-219N-H WAS MT21703 KIT, GB-0524A WAS GB-0522A, ALL U-BOLTS CHANGED TO GUB-4352 | JYANG4 23SEP22 | BA1025 40156827CMO |



| | | |
|--------------|-------------|---------------------|
| DENSITY | | lbs/in ³ |
| MASS | 3388.34 | lbs |
| VOLUME | 13037.73 | in ³ |
| SURFACE AREA | 111386.24 | in ² |
| HEIGHT | 96[2438] | |
| LENGTH | (217[5512]) | |
| WIDTH | (217[5512]) | |

COMMSCOPE, INC. OF NORTH CAROLINA

TOLERANCES: 1 PLACE .X[X] ± 0.25[6.3], 2 PLACE .XX[X] ± 0.12[3.0], 3 PLACE .XXX[X] ± 0.060[1.5], ANGLES ± 2°

SAP MATERIAL MASTER: MC-PM14M4-16-96

FINISH: MATERIAL

UNLESS OTHERWISE SPECIFIED DIMENSIONS ARE IN INCHES INTERPRET PER ANSI Y 14.5M-1994

| NAME | DATE | TITLE |
|-----------|------------|---------------------------------|
| CE YMENG | 08/31/2021 | ATLAS4, 14' FP,(16)2.88" X96"AP |
| RW YMENG | 10/10/2022 | |
| AD BA1025 | 10/13/2022 | |
| RE YMENG | 01/11/2023 | |

SCALE: 1:48 DOCUMENT NO. MC-PM14M4-16-96

| SIZE | Auth Group | INSL | MODEL | DRAWING | | | SHEET | | |
|------|------------|------|---------|---------|----------|---------|--------|----------|--------|
| C | | | VERSION | STATUS | REVISION | VERSION | STATUS | REVISION | 1 OF 7 |
| | | | 01 | RE | B | 01 | RE | B | |

4

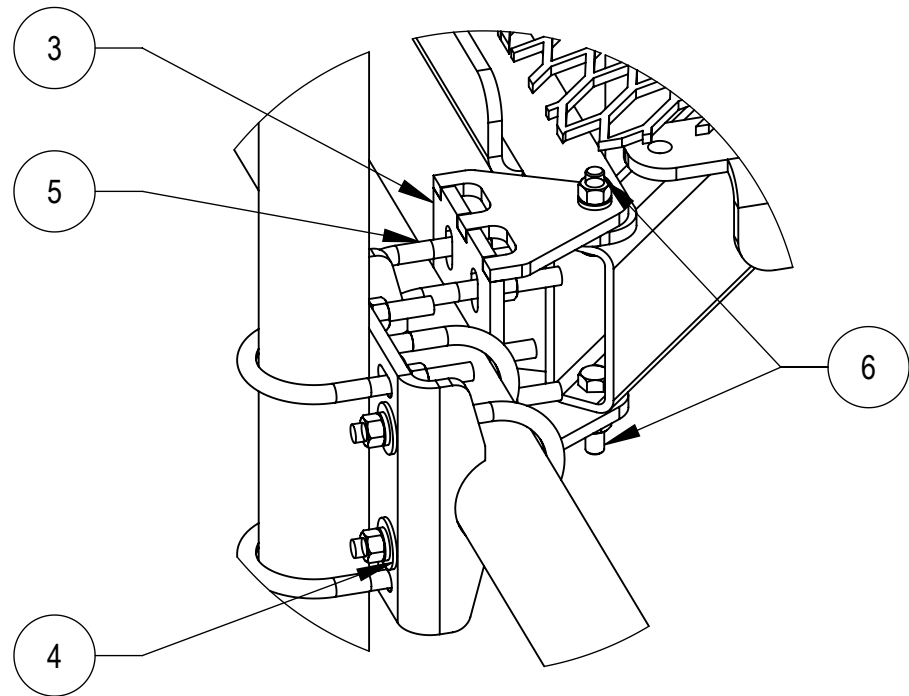
3

2

1

D

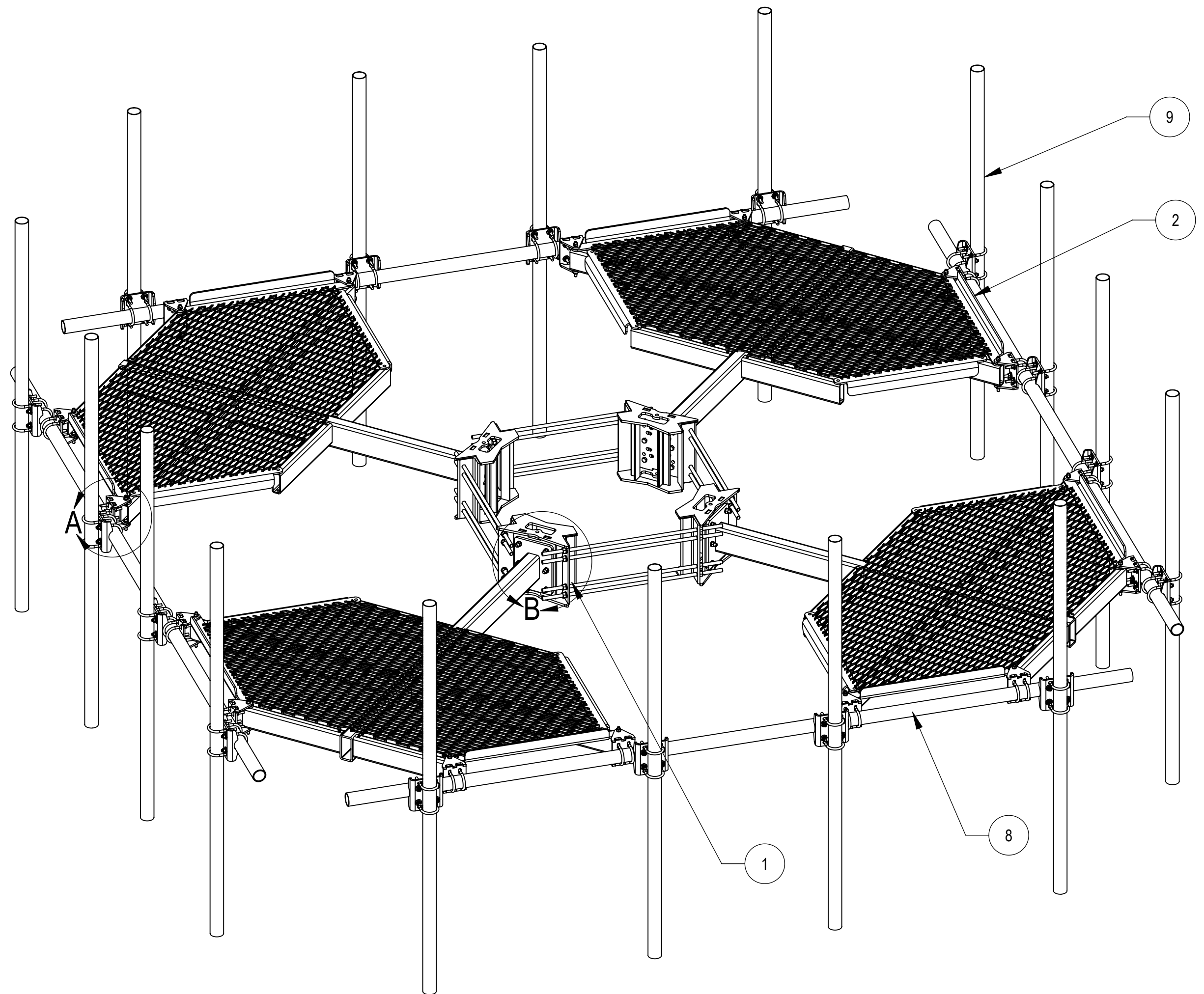
D



DETAIL A
SCALE 1 : 5

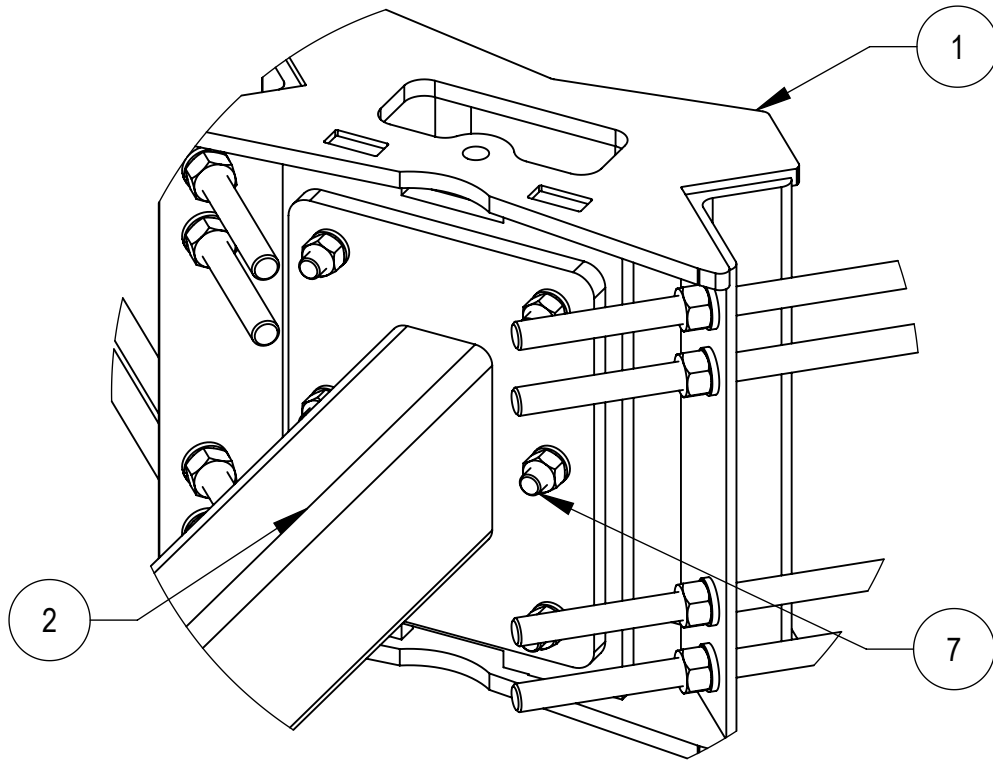
C

C



B

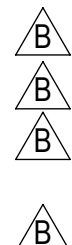
B



DETAIL B
SCALE 1 : 5

COMPONENT PART NUMBERS PROVIDED FOR ASSEMBLY PURPOSES;
INDIVIDUAL COMPONENTS MAY BE SHIPPED AS PARTS WITHIN AN INCLUDED KIT.

| ITEM | PART NO. | DESCRIPTION | QTY. | WEIGHT | NOTE NO. |
|------|----------------|-------------------------------------|------|------------|----------|
| 1 | MC-RMHD-1545-4 | 4 SECTOR RING MOUNT, 15"-45" POLE | 1 | 386.57LBS | |
| 2 | MC-PM4-2000 | WELDMENT, CO-LOCATION PLATFORM | 4 | 477.02 LBS | |
| 3 | MCPM-2005-00 | BRACKET, PIPE MOUNTING | 16 | 5.47 LBS | |
| 4 | MT-219N-H | SADDLE PIPE MOUNTING KIT, 2-7/8" OD | 16 | 10.61 LBS | |
| 5 | GUB-4352 | 1/2" X 3" X 5-1/4" GALV U-BOLT | 32 | 0.71 LBS | |
| 6 | GB-04205 | 1/2" X 2" GALV BOLT KIT | 32 | 0.16 LBS | |
| 7 | GB-0524A | 5/8" X 2-1/2" GALV BOLT KIT (A325) | 24 | 0.30 LBS | |
| 8 | MT-546-174 | PIPE, 2.875"OD X 174" | 4 | 84.30 LBS | |
| 9 | MT54696120 | PIPE, 2.875"OD X 96" | 16 | 28.35 LBS | |



A

A

| | | | | |
|--|----------------------|---------------------------------|--------|-----------------|
| COMMSCOPE, INC. OF NORTH CAROLINA | | | | |
| TITLE ATLAS4, 14' FP,(16)2.88" X96"AP | | | | |
| SIZE C | SCALE 1:48 | DOCUMENT NO. MC-PM14M4-16-96 | | |
| DRAWING | | VERSION | STATUS | REVISION |
| | | 01 | RE | B |
| | | | | SHEET 2 OF 7 |

© 2022 CommScope, Inc. Confidential

4

3

2

1



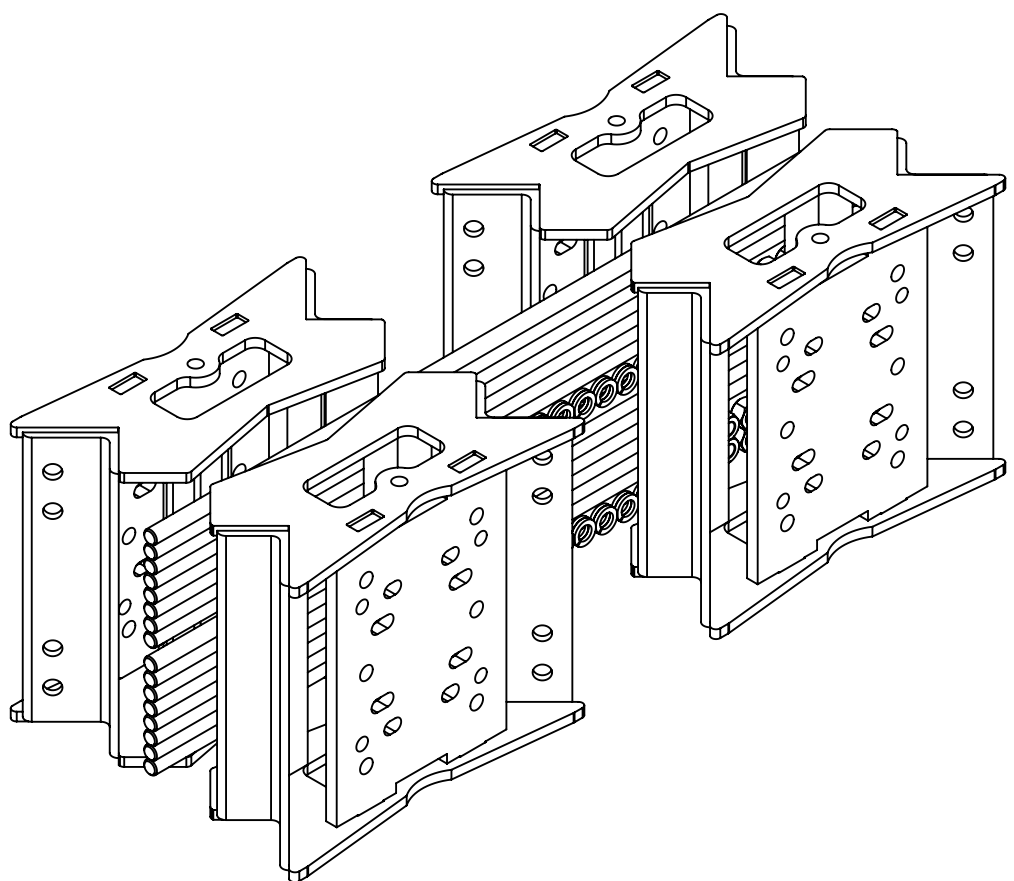
4

3

2

1

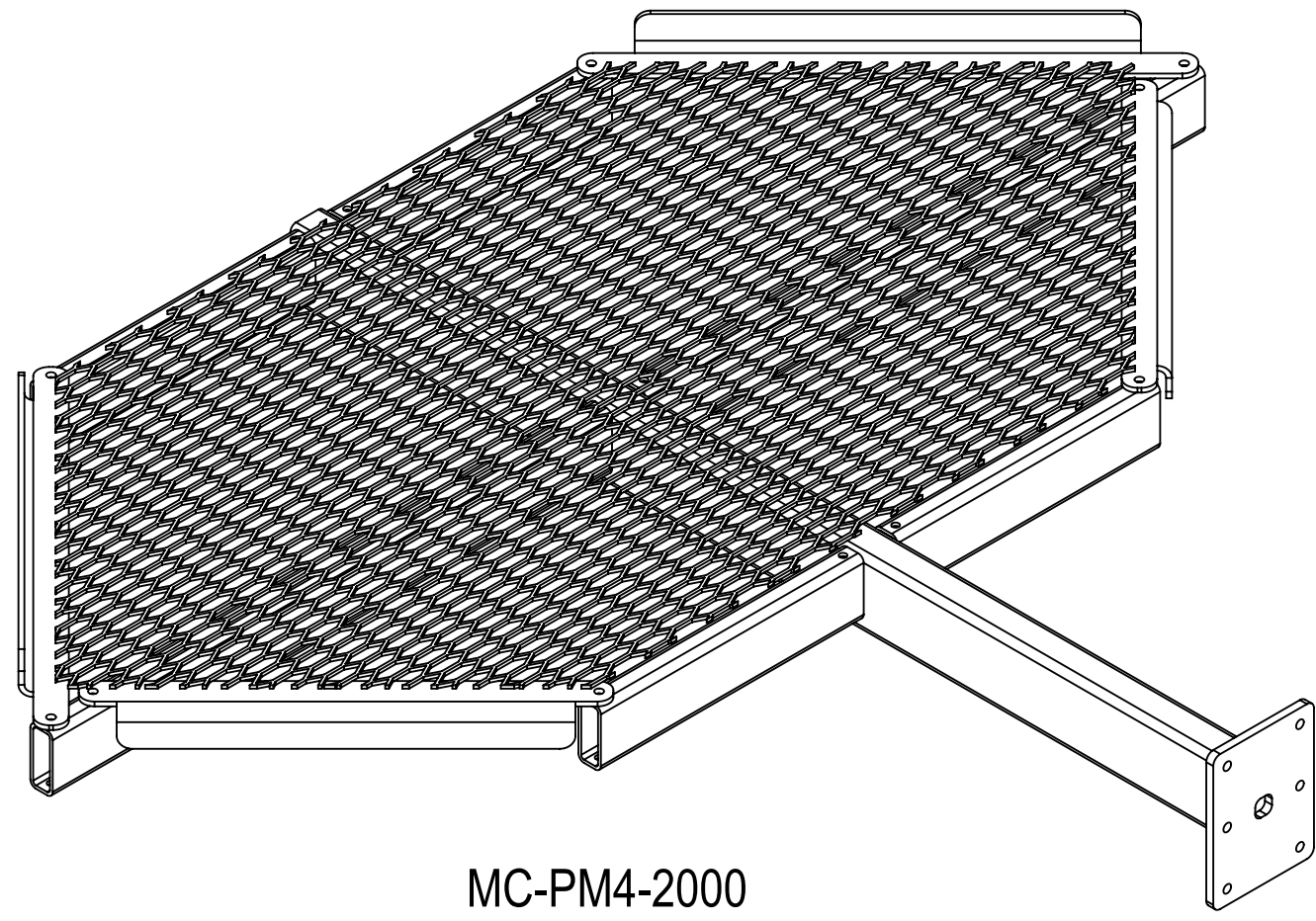
1X



MC-RMHD-1545-4

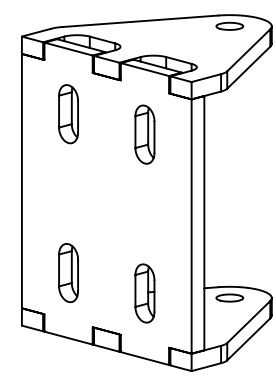
(INCLUDING 1X RMHD1545-4-1000, 16X MT38440, 32X GWL-06 AND 32X GN-06)

4X



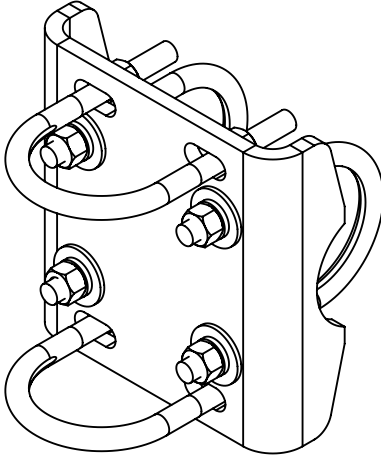
MC-PM4-2000

16X



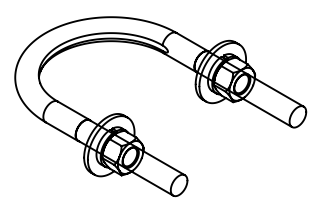
MCPM-2005-00

16X



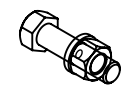
MT-219N-H

32X



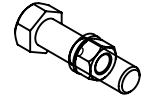
GUB-4352

32X



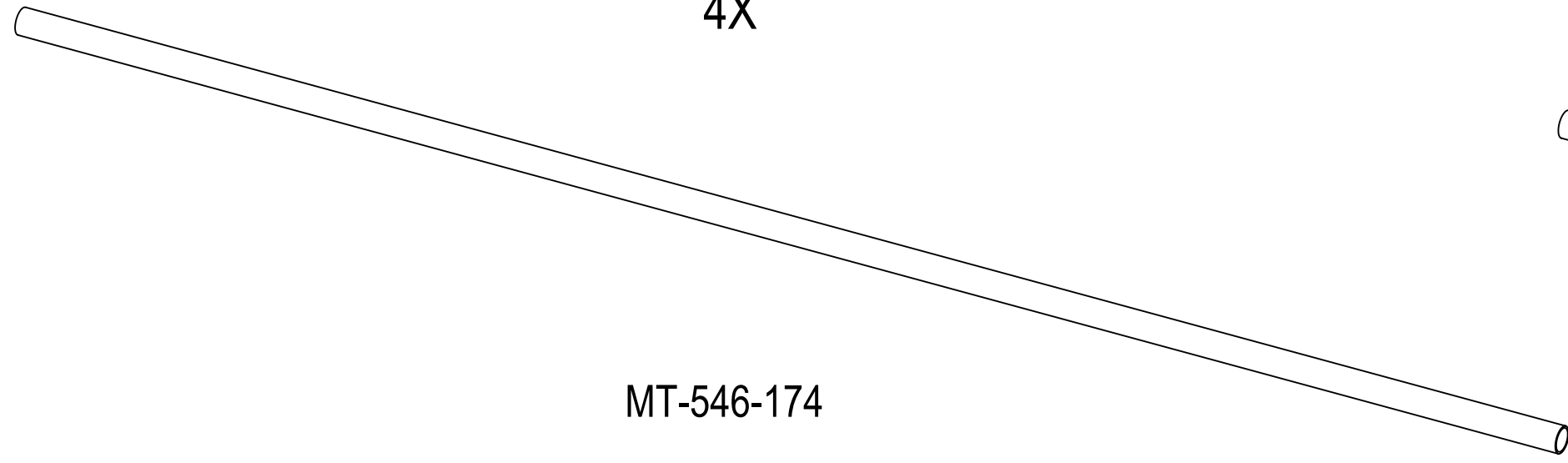
GB-04205

24X



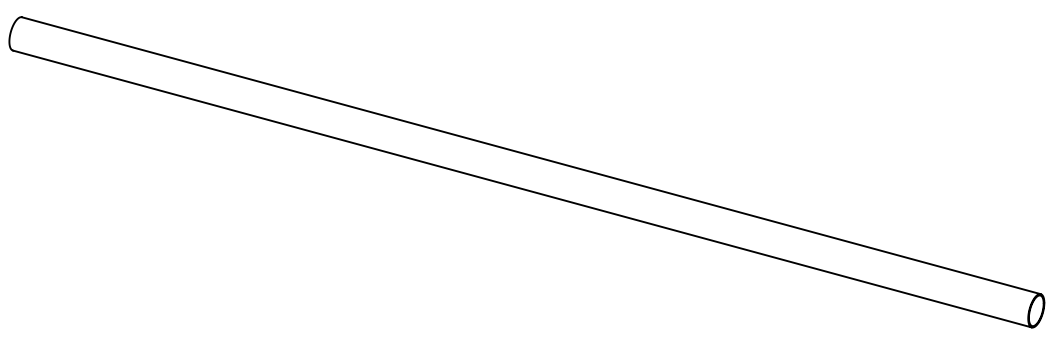
GB-0524A

4X



MT-546-174

16X



MT54696120

COMMSCOPE, INC. OF NORTH CAROLINA

TITLE
 ATLAS4, 14' FP,(16)2.88" X96"AP

| | | | | |
|------------------|---------------------|--|--|--|
| SIZE C | SCALE 1:8 | DOCUMENT NO. MC-PM14M4-16-96 | | |
|------------------|---------------------|--|--|--|

| | | | | |
|--|---------------|--------------|---------------|-----------------|
| | DRAWING | | | SHEET 3 OF 7 |
| | VERSION 01 | STATUS RE | REVISION B | |

© 2022 CommScope, Inc. Confidential

4

3

2

1

D

D

C

C

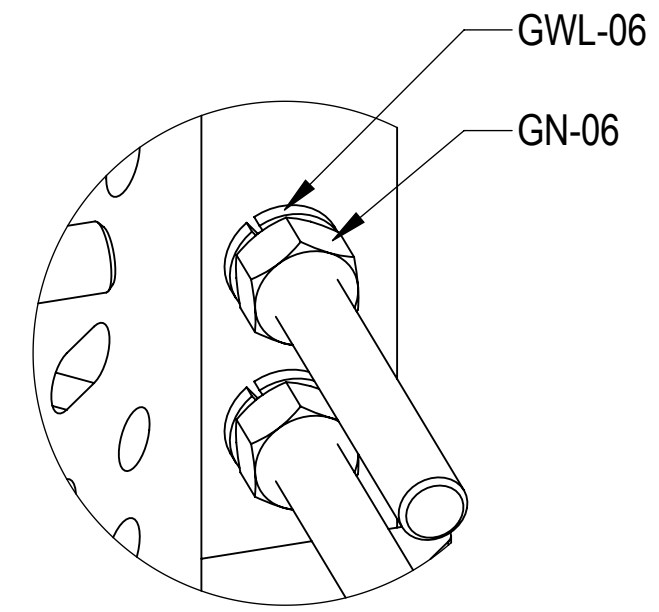
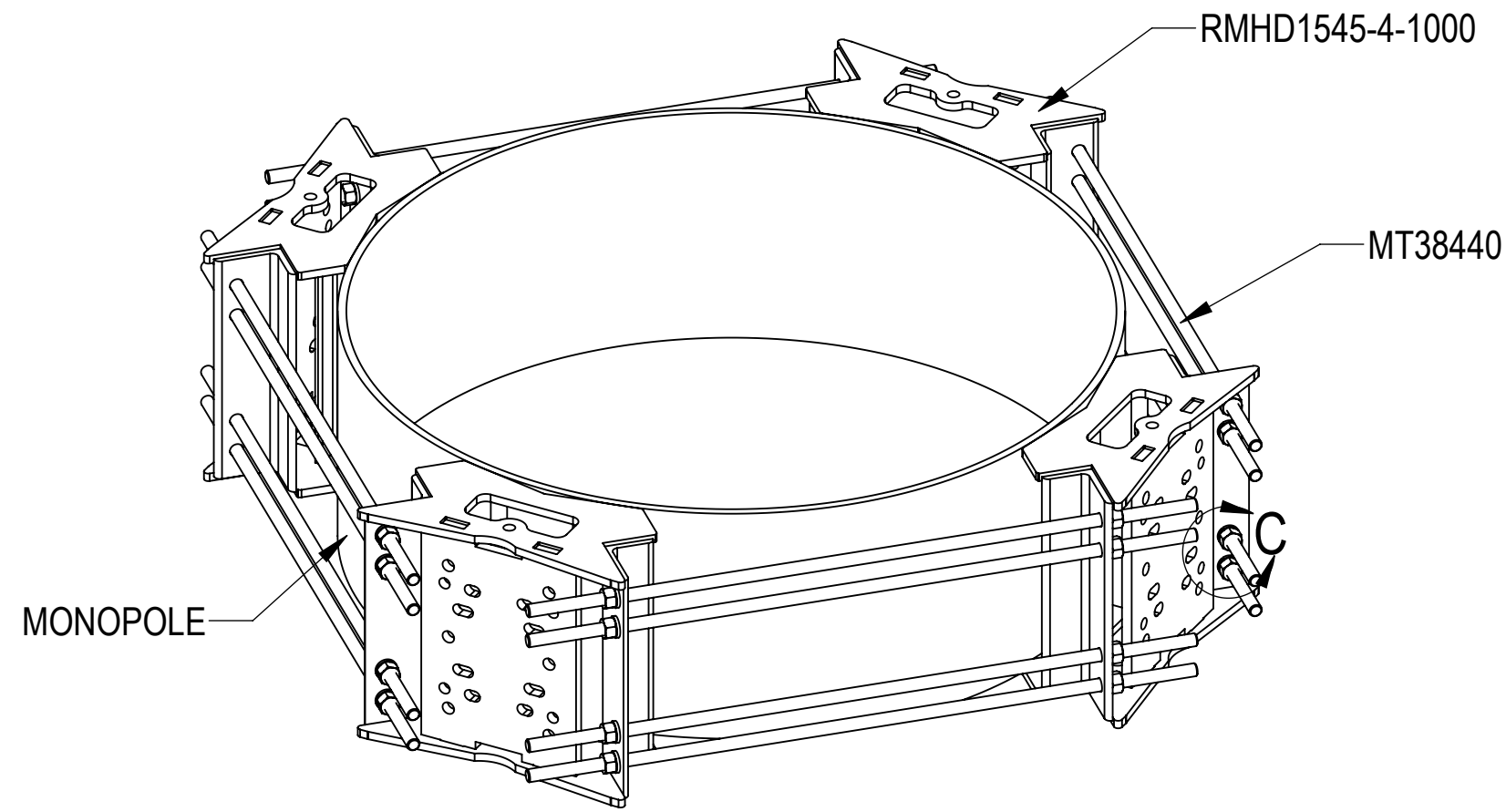
B

B

A

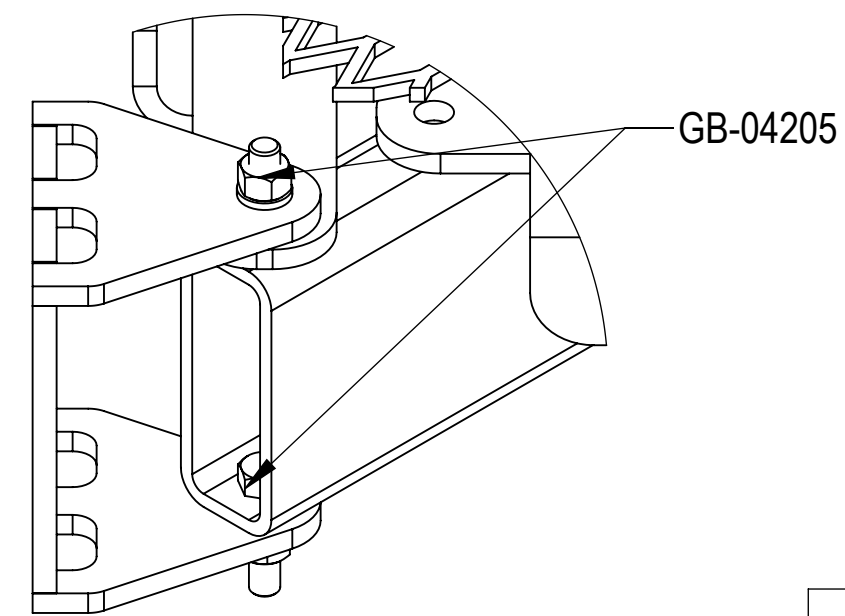
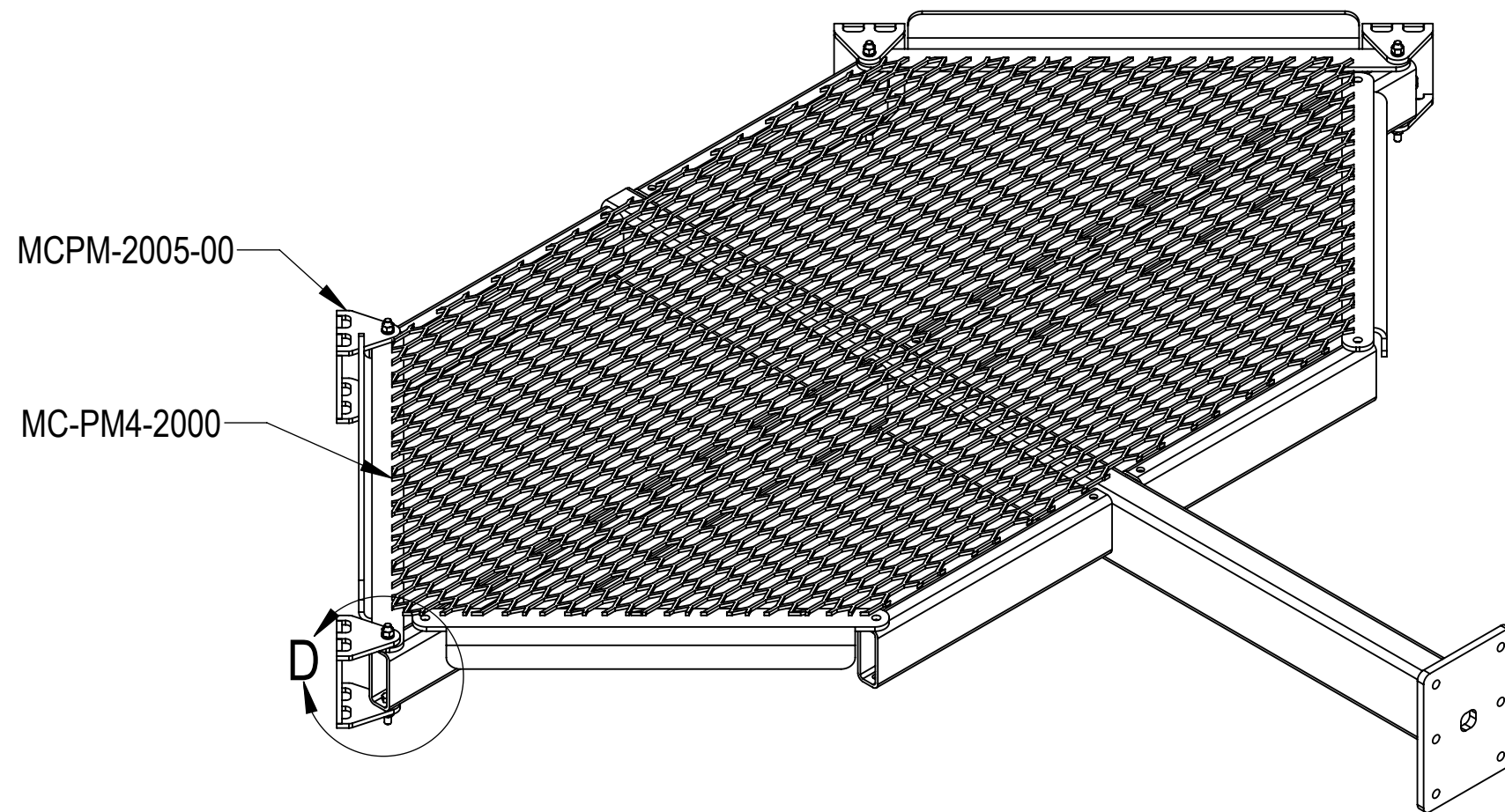
A

STEP 1: ATTACH RING MOUNT SECTORS(RMHD1545-4-1000) TO MONOPOLE USING THREAD RODS (MT38440) AND NUT KITS (GWL-06 & GN-06)



DETAIL C
SCALE 1 : 2

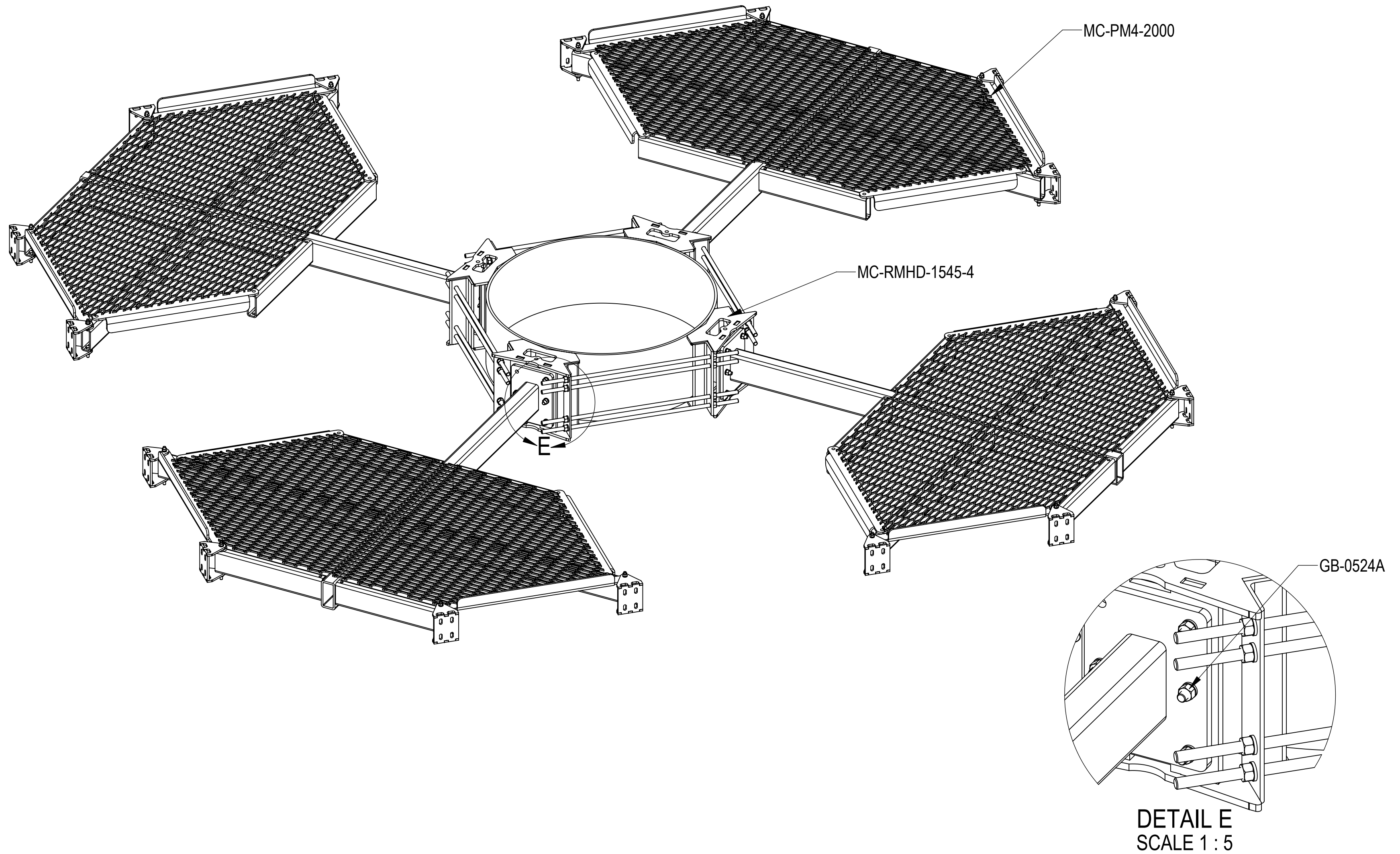
STEP 2: ATTACH PIPE MOUNTING BRACKETS (MCPM-2005-00) TO T-ARMS (MC-PM4-2000) USING BOLT KITS (GB-04205)



DETAIL D
SCALE 1 : 3

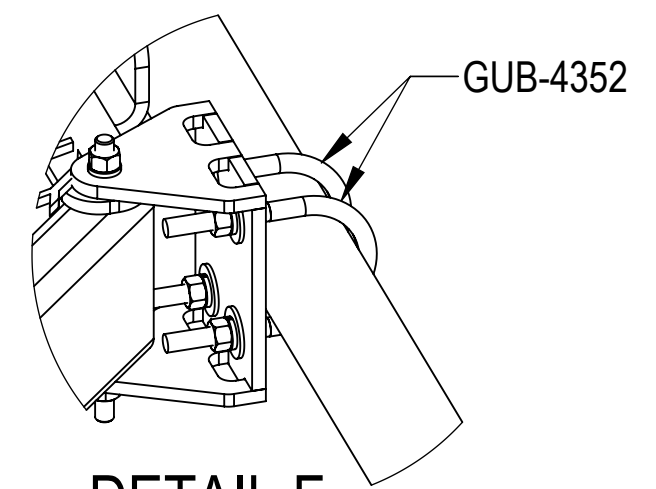
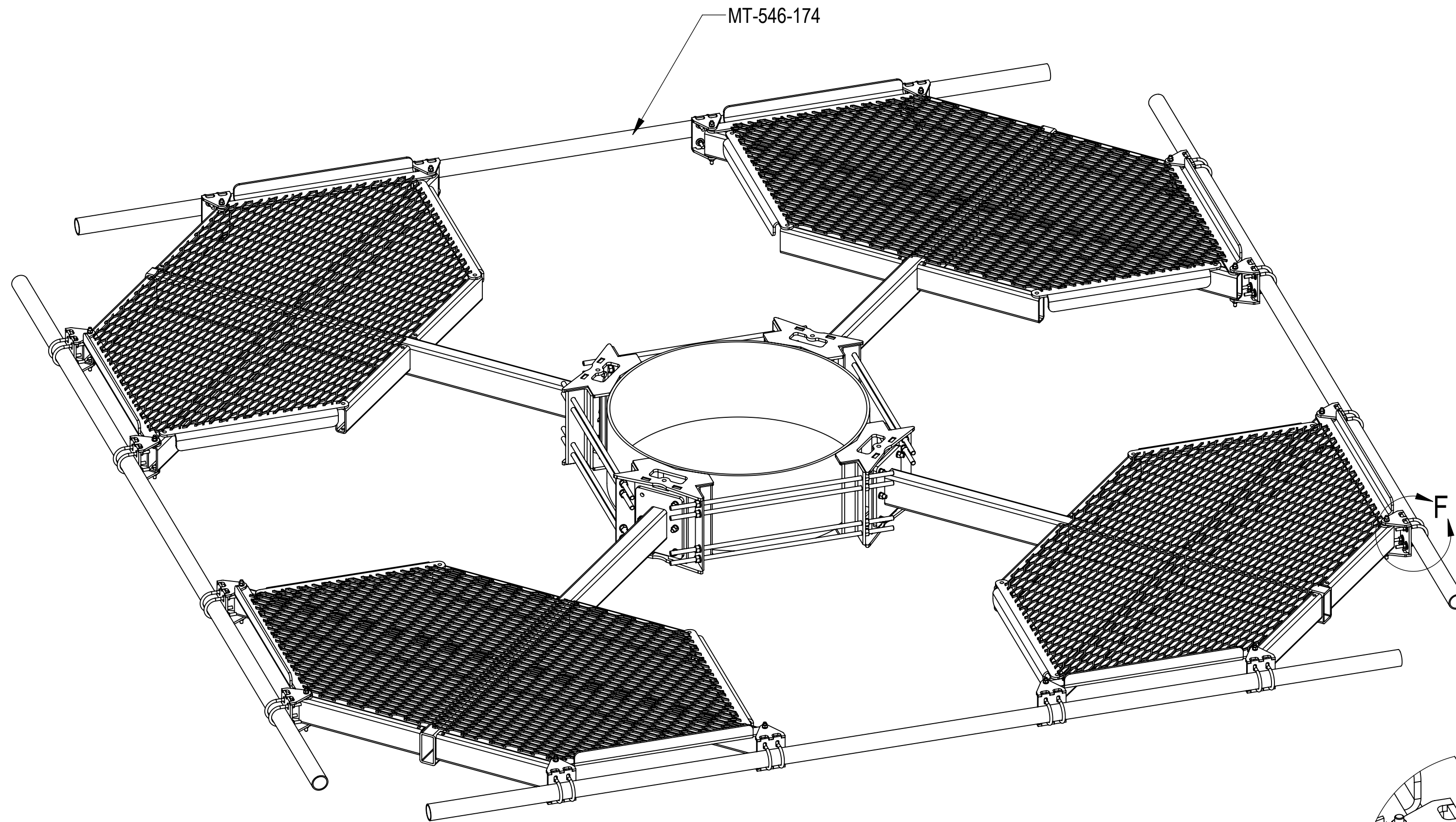
| | | | | |
|--|----------------------|---------------------------------|--------|----------|
| COMMSCOPE, INC. OF NORTH CAROLINA | | | | |
| TITLE ATLAS4, 14' FP,(16)2.88" X96"AP | | | | |
| SIZE C | SCALE 1:48 | DOCUMENT NO. MC-PM14M4-16-96 | | |
| | | DRAWING | | SHEET |
| | | VERSION | STATUS | REVISION |
| | | 01 | RE | B |
| | | | | 4 OF 7 |

STEP 3: ATTACH T-ARMS (MC-PM4-2000) TO RINGMOUNT (MC-RMHD-1545-4) USING BOLT KITS (GB-0524A)


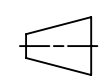


| | | | | |
|--|----------------------|---------------------------------|--------|-----------------|
| COMMSCOPE, INC. OF NORTH CAROLINA | | | | |
| TITLE ATLAS4, 14' FP,(16)2.88" X96"AP | | | | |
| SIZE C | SCALE 1:48 | DOCUMENT NO. MC-PM14M4-16-96 | | |
| | | DRAWING | | SHEET |
| | | VERSION | STATUS | REVISION |
| | | 01 | RE | B |
| | | | | SHEET 5 OF 7 |

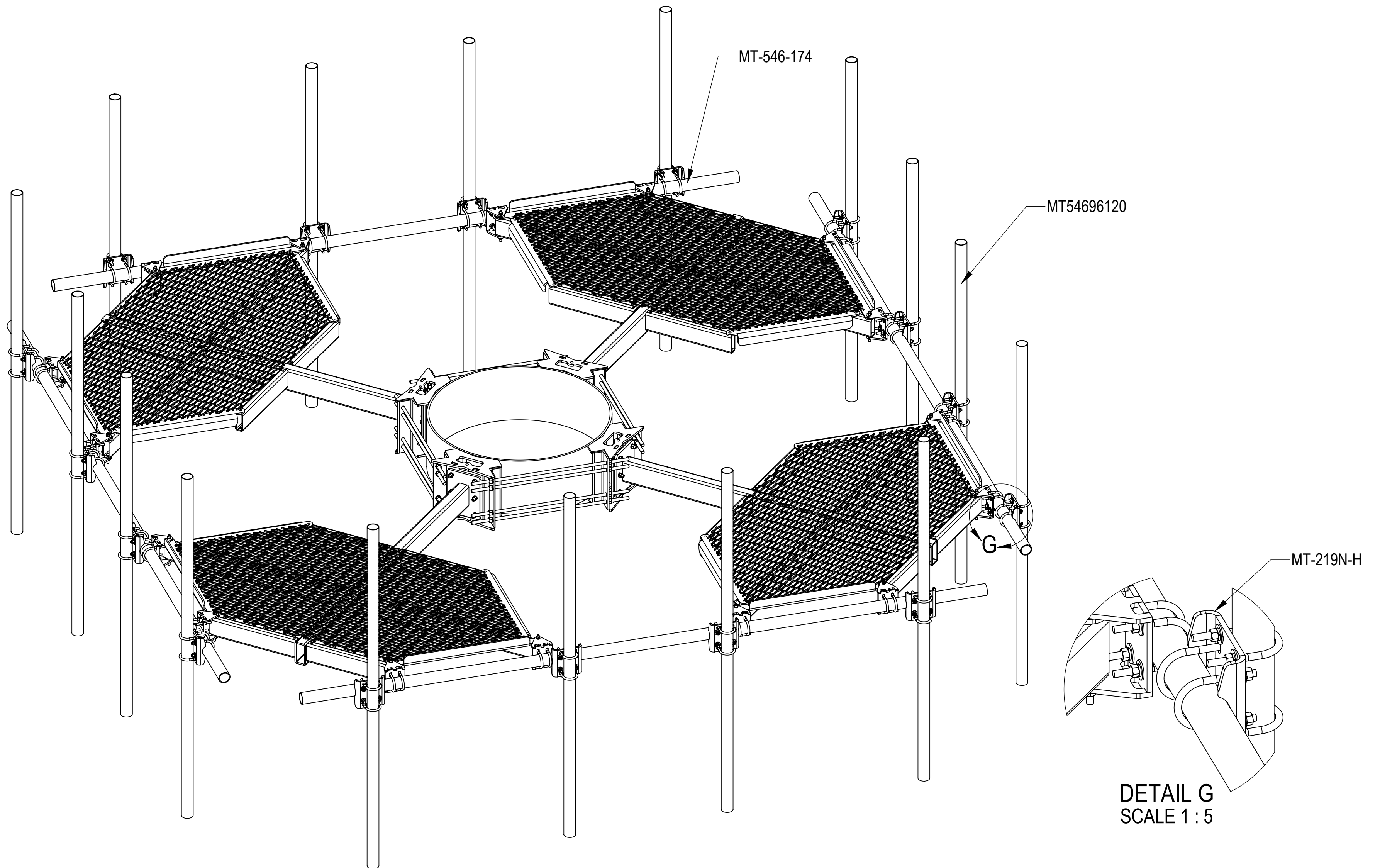
STEP 4: ATTACH FACE PIPES (MT-546-174) TO T-ARMS (MC-PM4-2000) USING U-BOLT KITS (GUB-4352)




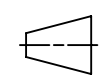
DETAIL F
SCALE 1 : 5

| | | | | | |
|---|----------------------|---------------------------------|--------------|---------------|-----------------|
| COMMSCOPE, INC. OF NORTH CAROLINA | | | | | |
| TITLE ATLAS4, 14' FP,(16)2.88" X96"AP | | | | | |
| SIZE C | SCALE 1:48 | DOCUMENT NO. MC-PM14M4-16-96 | | | |
|   | | DRAWING | | | SHEET 6 OF 7 |
| | | VERSION 01 | STATUS RE | REVISION B | |

STEP 5: ATTACH ANT PIPES (MT54696120) TO FACE PIPES (MT-546-174) USING SADDLE PIPE MOUNTING PLATES (MT-219N-H)



DETAIL G
SCALE 1 : 5

| | | | | |
|---|---------------|---------------------------------|--------------|---------------|
| COMMSCOPE, INC. OF NORTH CAROLINA | | | | |
| TITLE ATLAS4, 14' FP,(16)2.88" X96"AP | | | | |
| SIZE C | SCALE 1:48 | DOCUMENT NO. MC-PM14M4-16-96 | | |
|   | | DRAWING | | SHEET |
| | | VERSION 01 | STATUS RE | REVISION B |