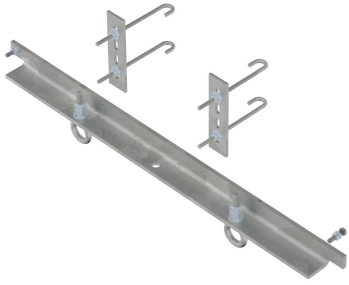


# 860674608-U | GRIP ANCHOR,CABLE LADDER,40", UNIVERSAL

---



Heavy Duty Cable Ladder Cross Member with Cable Attachment Points

-Product is designed to be field installed as needed on cable ladders to allow for the attachment of cables. Replaces a current rung on the cable ladder. Additional units can be installed along the cable ladder as needed to support additional cables.

-Purpose built cable ladder rung that is designed to support 1000 pounds of cable per eye or up to 1000 pounds in combination. Ideal for Hybrid cable. Includes mounting eye bolt for attachment.

Installs on the below cable ladders up to 40" wide

- Not to be used for hoisting.
- Competent person to make determination of usage on the structure.
- Competent person to field cut to length as needed. Apply cold galv to cut ends.

## Product Classification

<b>Portfolio</b>	CommScope®
<b>Product Type</b>	Ladder kit
<b>Ordering Note</b>	CommScope® standard product with terms
<b>Warranty</b>	One year

## General Specifications

**Cable Runs, quantity** 3

## Dimensions

**Width** 1,016 mm | 40 in

## Material Specifications

**Material Type** Hot dip galvanized steel

## Packaging and Weights

**Included** Attachment kits

**Packaging quantity** 1

## Regulatory Compliance/Certifications

# 860674608-U | GRIP ANCHOR,CABLE LADDER,40", UNIVERSAL

---

**Agency**

CHINA-ROHS  
ROHS  
UK-ROHS

**Classification**

Above maximum concentration value  
Compliant/Exempted  
Compliant/Exempted



**Included Products**

- HK-CL-U – Universal Cable Ladder Hardware Kit for 1 in to 4-1/2 in round or angle members

**\* Footnotes**

**Warranty** For more information, please consult our Product Warranty guidelines