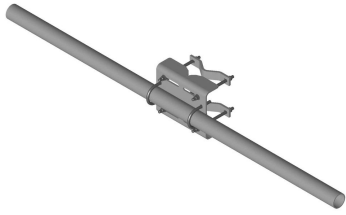


MD-SSHD-8R



Tower Leg Mounted Microwave Antenna Channel Support Kit, Heavy Duty 96 in, includes pipe

Product Classification

Product Type Microwave strut support

General Specifications

Mounting Straight or tapered legs up to 203.2 mm (8 in) OD

Pipe, quantity 1

Tower Taper Non-tapered | Tapered

Dimensions

Height 304.8 mm | 12 in

Width 2,438.4 mm | 96 in

Length 355.6 mm | 14 in

Pipe Length 2,438.4 mm | 96 in

Mounting Diameter, maximum 203.2 mm | 8 in

Pipe Outer Diameter 88.9 mm | 3.5 in

Material Specifications

Material Type Hot dip galvanized steel

Mechanical Specifications

Wind Rating For Specifications, please contact your local ANDREW representative

Packaging and Weights

Included Attachment hardware | Clamps | Pipes

Packaging quantity 1

MD-SSHHD-8R

Weight, net

63.5 kg | 139.993 lb

Regulatory Compliance/Certifications

Agency

Classification

CHINA-ROHS

Above maximum concentration value

ROHS

Compliant/Exempted

UK-ROHS

Compliant/Exempted



* Footnotes

Wind Rating

BWS—Base Wind Speed; FBC—Florida Building Code