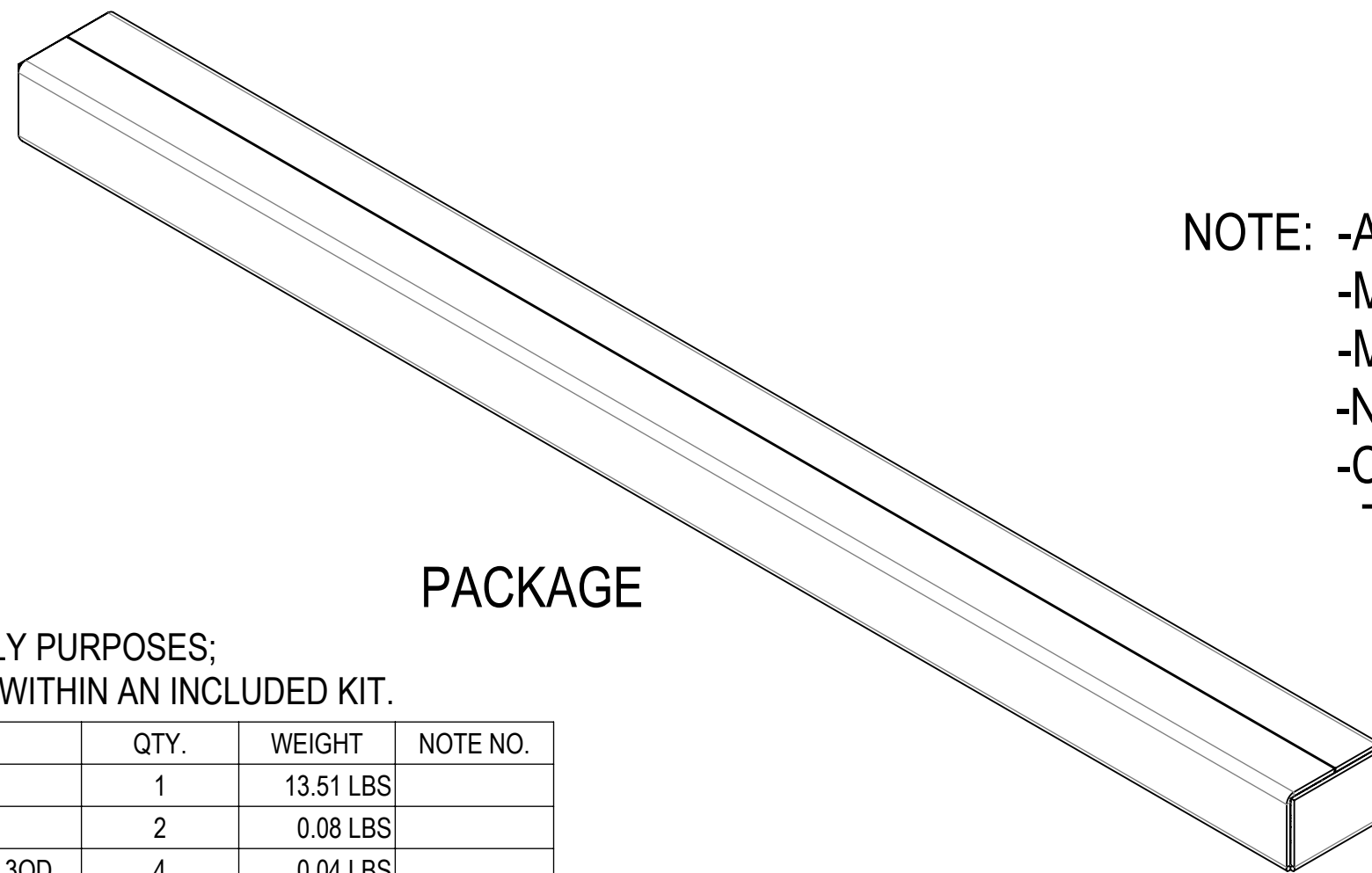
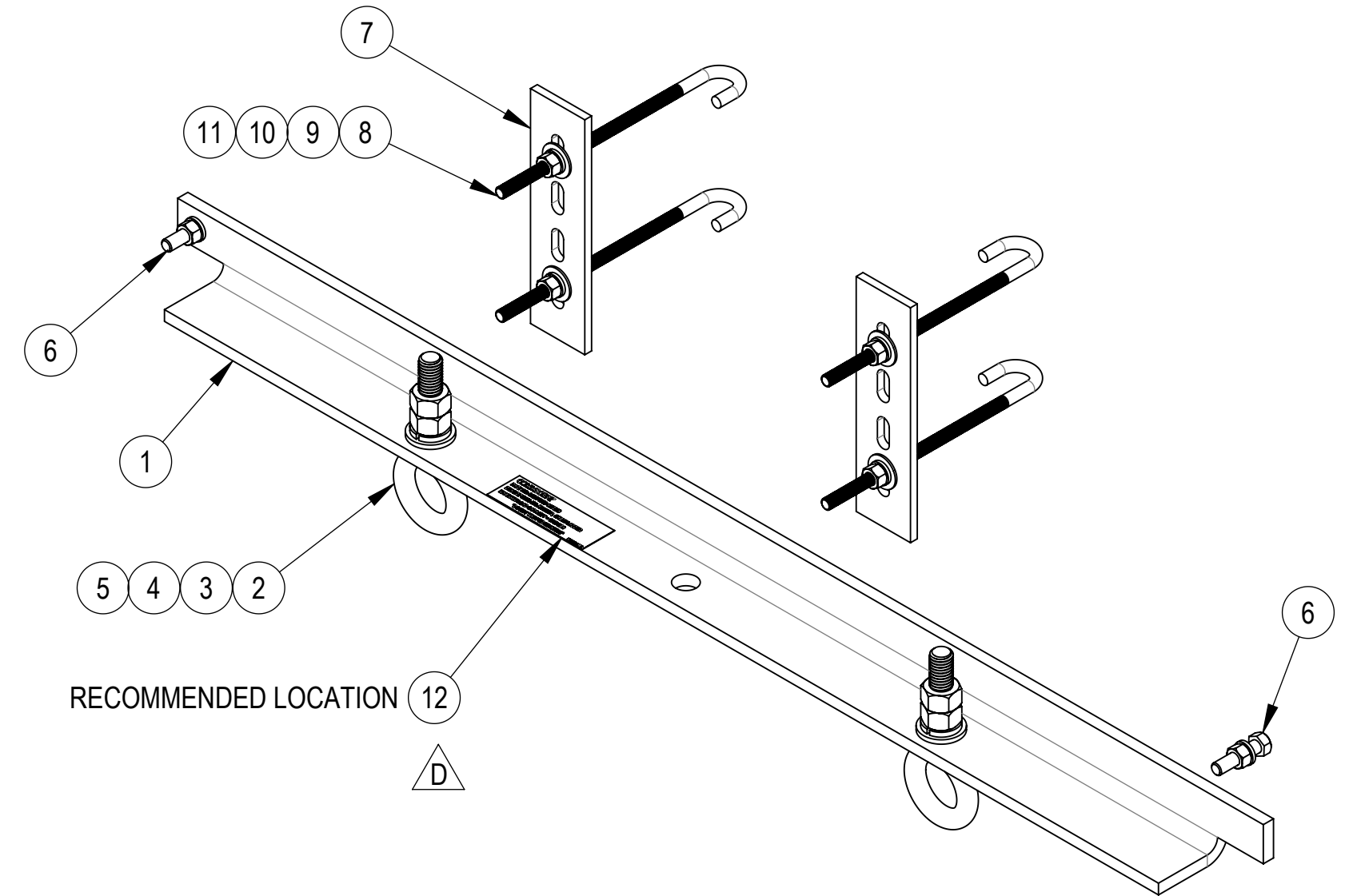
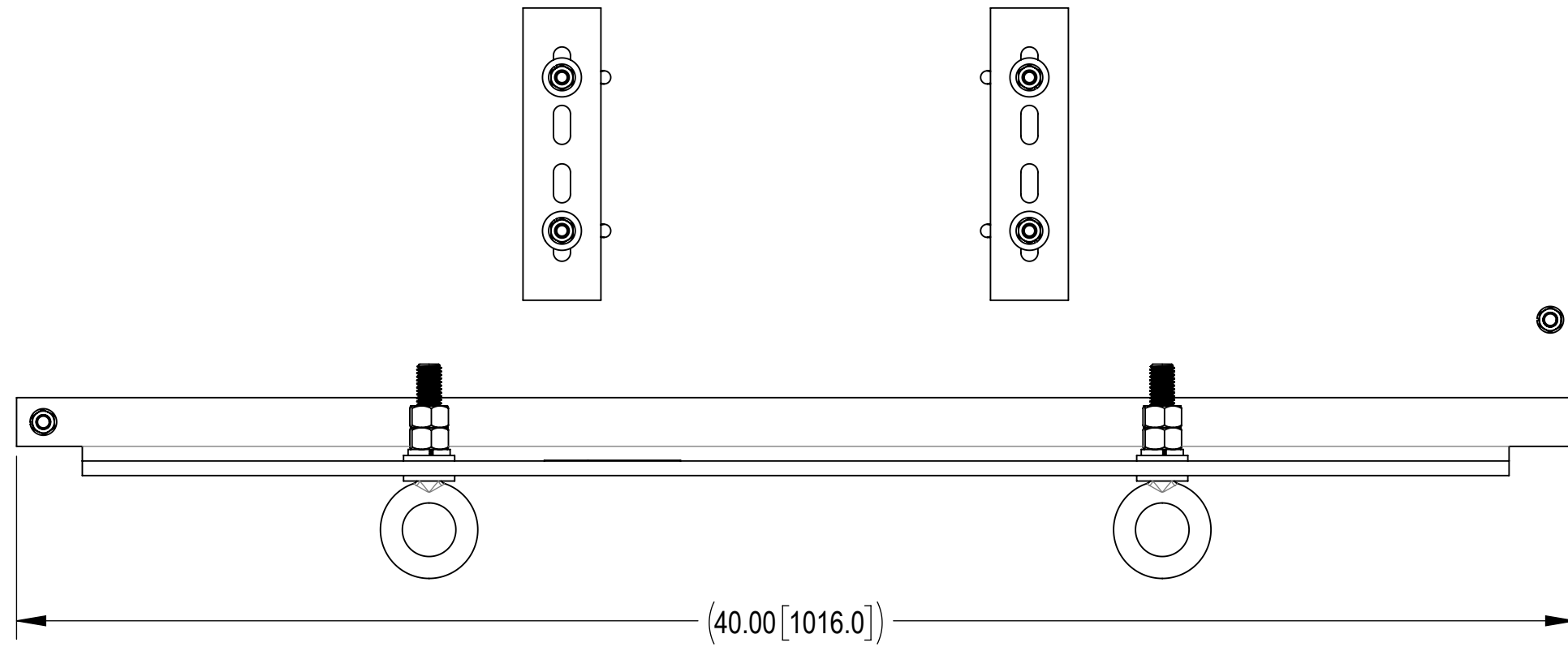


- 1.0 GENERAL NOTES  
 1.1 ALL METRIC DIMENSIONS ARE IN BRACKETS [X. X]  
 1.2 FOR PATENT INFO: <https://www.cs-pat.com>  
 2.0 DESIGN NOTES  
 2.1 ANY HAZARDS OR OBSTRUCTIONS TO THE CLIMBING FACILITY AND SAFETY CLIMB MUST BE IDENTIFIED PRIOR TO INSTALLING THE APPURTENANCE. ADDITIONAL PRODUCTS MAY BE REQUIRED TO MAINTAIN THE INTEGRITY OF THE SAFETY CLIMB. DURING INSTALLATION, TEMPORARY AND/OR PERMANENT PRECAUTIONARY MEASURES SHOULD BE TAKEN TO PRESERVE THE CLIMBING FACILITY AND/OR SAFETY CLIMB.  
 3.0 MANUFACTURING/SPECIAL REQUIREMENTS  
 3.1 TIGHTEN ALL BOLTS SECURING FLAT PLATES BY THE TURN-OF-NUT METHOD. TIGHTEN ALL U-BOLTS USING TURN-OF-NUT METHOD WITH ATTENTION TO LEAVE EQUAL DISTANCE AND EQUAL FORCE ON EACH LEG OF THE U-BOLT.  
 3.2 ALL FIELD CUT AND DRILLED SURFACES SHALL BE REPAIRED WITH A MINIMUM OF TWO COATS OF ZINGA OR ZINC COTE PER ASTM A780.  
 4.0 TEST  
 5.0 PACKAGING  
 5.1 PACKAGING SHALL MEET COMMSCOPE REQUIREMENTS PER DOCUMENT IS-PL-3005  
 5.2 PRINTED DOCUMENT TO BE PLACED INSIDE POLYBAG AND THEN IN SHIPPING CONTAINER  
 5.3 EXTRA HARDWARE MAY BE SUPPLIED, BAGGED AND SHIPPED

REVISIONS			
REV.	DESCRIPTION	DATE	APPROVED
A	INITIAL RELEASE	RY1002 03JAN24	YZ1080 40185964CMO
B	CHANGED BOX FROM BX92 TO BXEB	RY1002 16JAN24	YZ1080 40185964CMO
C	QTY FOR 9674-1(ITEM 2) & GWL-05(ITEM 4) WAS 1EA, GWF05A(ITEM 3) & GN-05(ITEM 5) WAS 2EA; ADDED NOTE FOR EYEBOLT	RY1002 20FEB24	EB1063 40188637CMO
D	MTC4164-LAB01 (ITEM 12) WAS MTC4164-LAB04	RY1002 12MAR24	EB1063 40190737CMO



PACKAGE

NOTE: -ANY ARRANGEMENTS OF THE EYEBOLTS IS ACCEPTABLE  
 -MAXIMUM LOADING CAPACITY PER EYEBOLT = 1000 LBS  
 -MAXIMUM LOADING CAPACITY IN ANY COMBINATION = 1000 LBS  
 -NOT TO BE USED FOR HOISTING  
 -CABLE LADDER TO BE INSPECTED BY COMPETENT PERSON TO ENSURE PROPER INSTALLATION PRIOR TO INSTALL

COMPONENT PART NUMBERS PROVIDED FOR ASSEMBLY PURPOSES; INDIVIDUAL COMPONENTS MAY BE SHIPPED AS PARTS WITHIN AN INCLUDED KIT.

ITEM	PART NO.	DESCRIPTION	QTY.	WEIGHT	NOTE NO.
1	MTC4164-040-00	40 INCH CROSSMEMBER GALV	1	13.51 LBS	
2	9674-1	BOLT,EYE,5/8X3,STL,ZN PLD	2	0.08 LBS	
3	GWFO5A	GALV FLAT WASHER HARDENED 5/8", 1.3OD	4	0.04 LBS	
4	GWL-05	5/8" GALV LOCK WASHER	2	0.03 LBS	
5	GN-05	5/8" GALV HEX NUT	4	0.08 LBS	
6	GB-03145	3/8" X 1-1/2" GALV BOLT KIT	2	0.07 LBS	
7	HKCLU.02	BACKING PLATE	2	0.95 LBS	
8	GJB0380	8" GALV J-BOLT KIT	4	0.23 LBS	
9	GN-03	3/8" GALV HEX NUT	4	0.02 LBS	
10	GWL-03	3/8" GALV LOCK WASHER	4	0.01 LBS	
11	GWFO3	3/8" GALV FLAT WASHER	4	0.01 LBS	
12	MTC4164-LAB01	LABEL, HG ANCHOR, CABLE LADDER	1	0.00 LBS	

DENSITY	19.49	lbs/in <sup>3</sup>
MASS	72.68	lbs
VOLUME	558.64	in <sup>3</sup>
SURFACE AREA	8.25"	in <sup>2</sup>
HEIGHT	40.00"	
LENGTH		
WIDTH		

**COMMSCOPE, INC. OF NORTH CAROLINA**

TOLERANCES: 1 PLACE .X[X] ± 0.2[6.3], 2 PLACE .XX[X] ± 0.12[3.0], 3 PLACE .XXX[X] ± 0.060[1.5], ANGLES ± 2°

SAP MATERIAL MASTER: 860674608-U

FINISH: MATERIAL

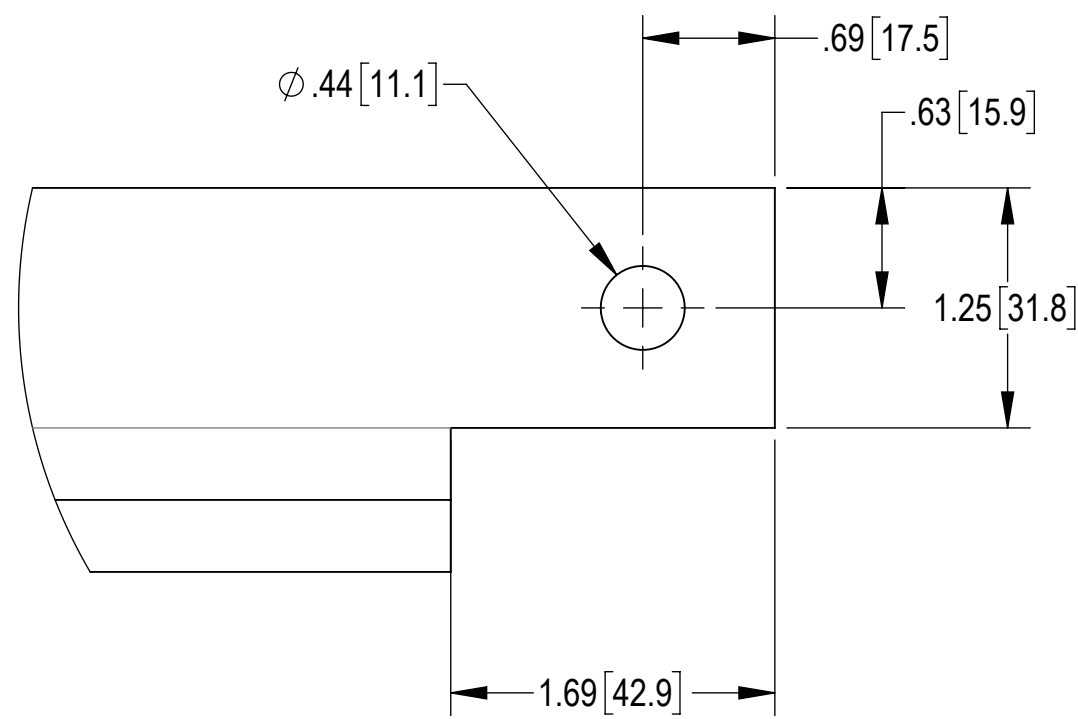
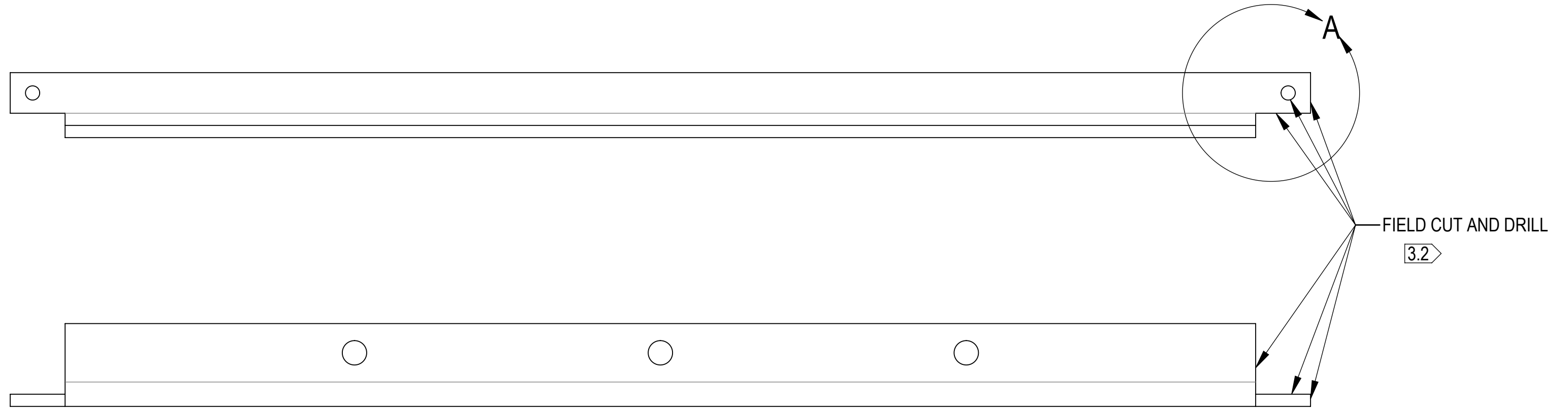
NAME	DATE	TITLE
CE RY1002	03JAN24	GRIP ANCHOR,CABLE LADDER,40", UNIVERSAL
RW RY1002	03/12/2024	
AD AG1119	03/12/2024	
RE RY1002	03/27/2024	

SCALE: 1:4 DOCUMENT NO.: 860674608-U

ECN 40190737CMO


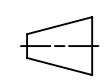
SIZE	Auth Group	INSL	MODEL	DRAWING			SHEET		
C			VERSION	STATUS	REVISION	VERSION	STATUS	REVISION	1 OF 3
			03	RE	D	03	RE	D	

THIS PAGE ONLY SHOW FIELD CUT AND DRILL HOLE LOCATION FOR CROSSMEMBER



DETAIL A  
SCALE 1 : 1

NOTE: -ANY ARRANGEMENTS OF THE EYEBOLTS IS ACCEPTABLE  
 -MAXIMUM LOADING CAPACITY PER EYEBOLT = 1000 LBS  
 -MAXIMUM LOADING CAPACITY IN ANY COMBINATION = 1000 LBS  
 -NOT TO BE USED FOR HOISTING  
 -CABLE LADDER TO BE INSPECTED BY COMPETENT PERSON  
 TO ENSURE PROPER INSTALLATION PRIOR TO INSTALL

COMMSCOPE, INC. OF NORTH CAROLINA				
TITLE GRIP ANCHOR,CABLE LADDER,40",UNIVERSAL				
SIZE <b>C</b>	SCALE <b>1:3</b>	DOCUMENT NO. 860674608-U		
 		DRAWING		SHEET
		VERSION 03	STATUS RE	REVISION D

4

3

2

1

D

D

C

C

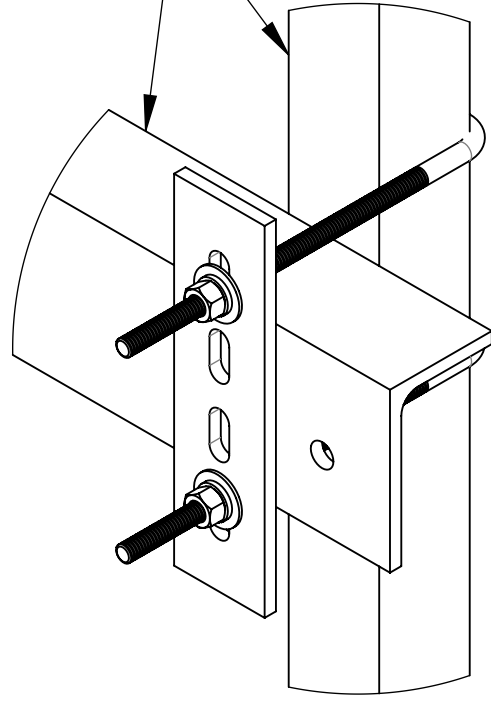
B

B

A

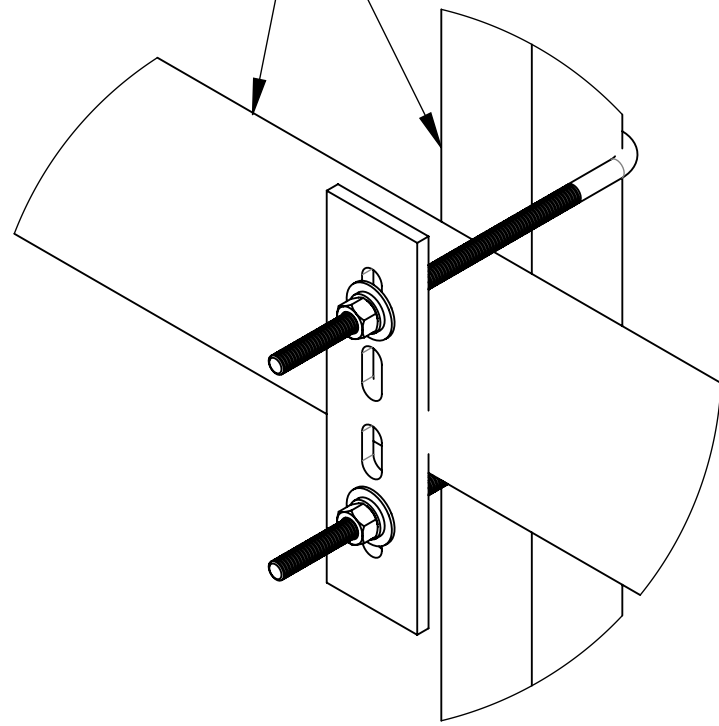
A

SIDE RAIL AND ANGLE MEMBER  
SOLD SEPARATELY



ANGLE MEMBER  
SET-UP

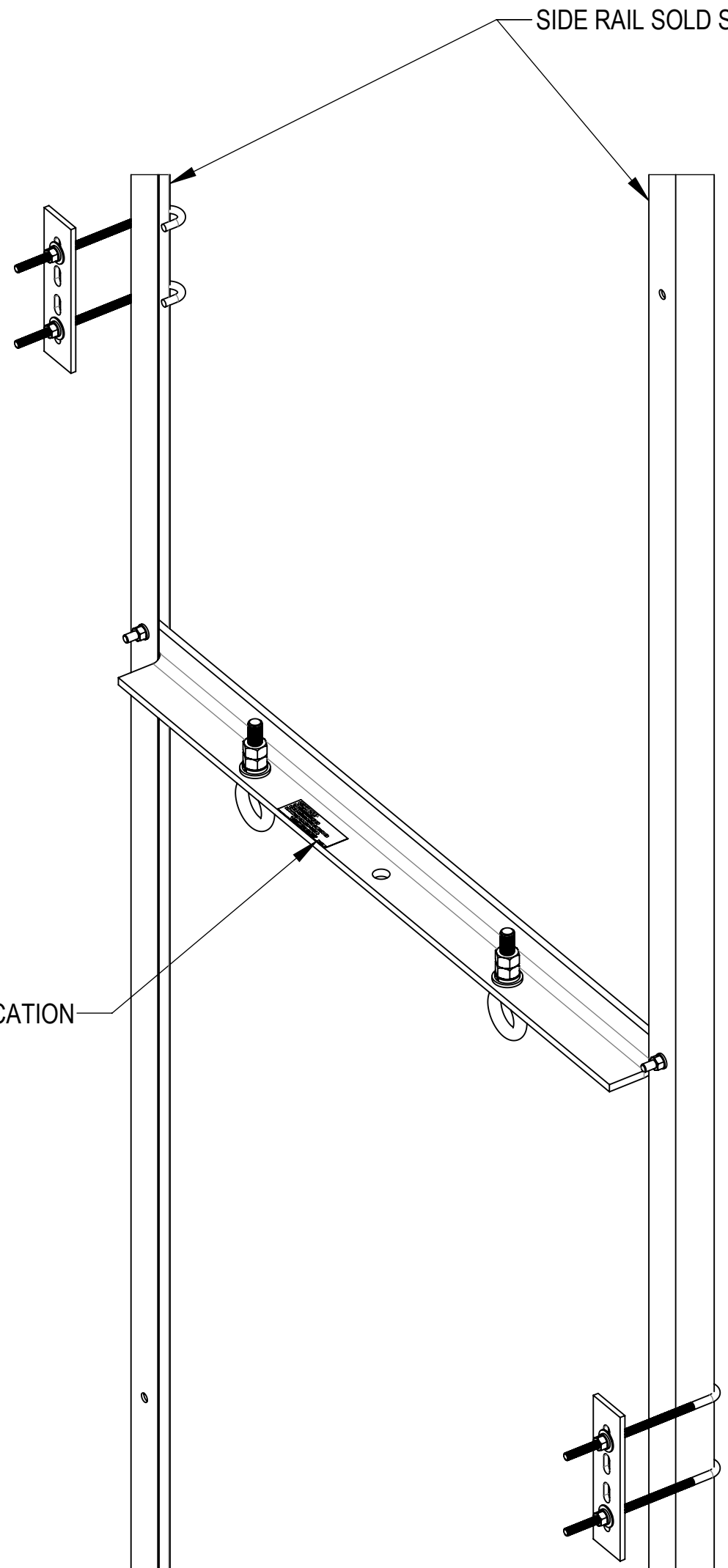
SIDE RAIL AND ROUND MEMBER  
SOLD SEPARATELY



ROUND MEMBER  
SET-UP

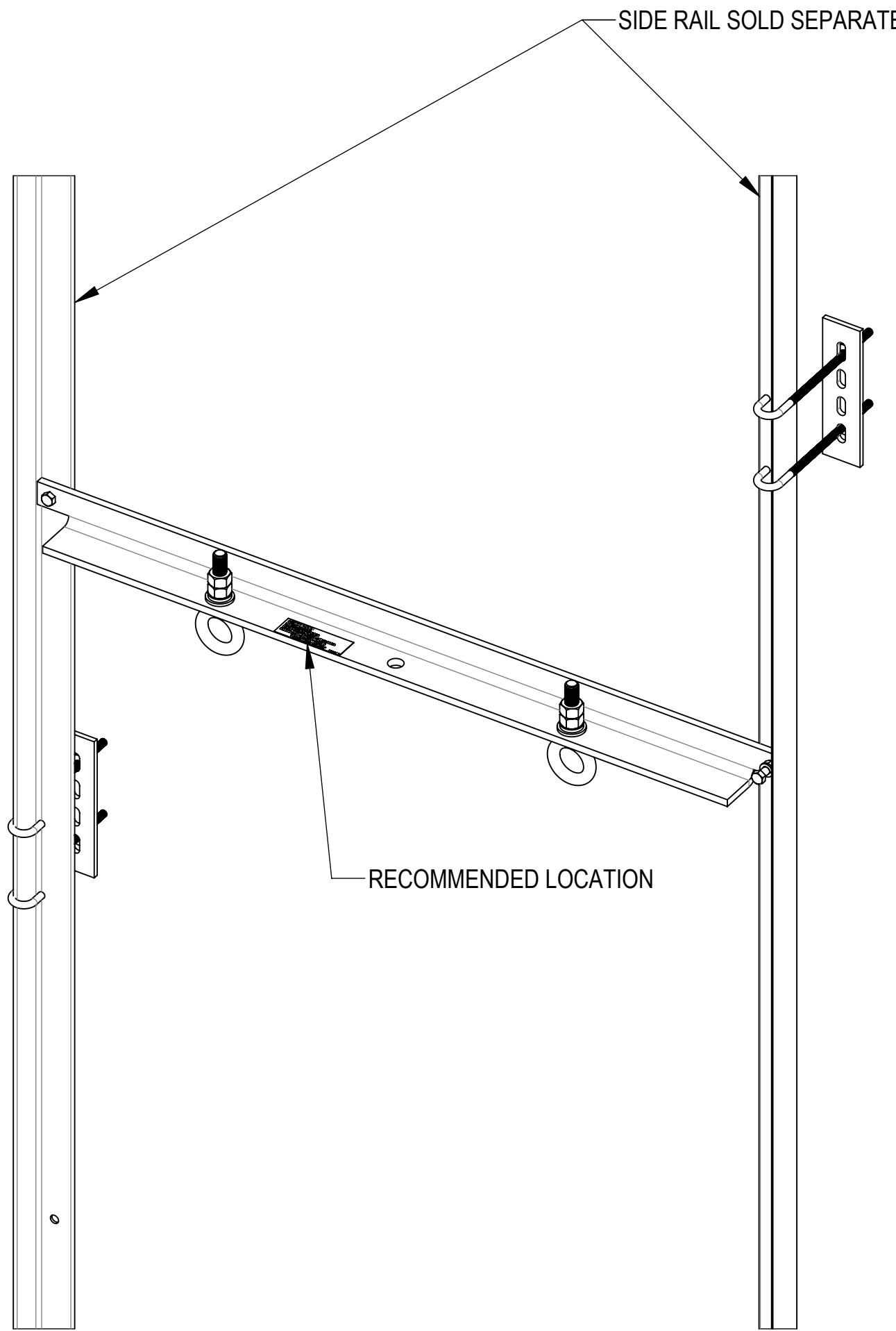
NOTE: -ANY ARRANGEMENTS OF THE EYEBOLTS IS ACCEPTABLE  
-MAXIMUM LOADING CAPACITY PER EYEBOLT = 1000 LBS  
-MAXIMUM LOADING CAPACITY IN ANY COMBINATION = 1000 LBS  
-NOT TO BE USED FOR HOISTING  
-CABLE LADDER TO BE INSPECTED BY COMPETENT PERSON  
TO ENSURE PROPER INSTALLATION PRIOR TO INSTALL

SIDE RAIL SOLD SEPARATELY



RECOMMENDED LOCATION

SIDE RAIL SOLD SEPARATELY



RECOMMENDED LOCATION

ANOTHER INSTALL METHOD  
DIFFERENT INSTALLATION METHODS CAN BE ADOPTED AS  
NEEDED COMMON TO DIFFERENT CABLE LADDERS OF THE SERIES

COMMSCOPE, INC. OF NORTH CAROLINA

TITLE  
GRIP ANCHOR,CABLE LADDER,40",UNIVERSAL

SIZE C SCALE 1:6 DOCUMENT NO. 860674608-U

DRAWING	VERSION	STATUS	REVISION	SHEET 3 OF 3
	03	RE	D	

© 2024 CommScope, Inc. Confidential

4

3

2

1