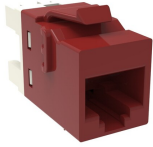


# 2291217-RD

---



## KJ-Series Modular Jack, RJ45, Cat5e Unshielded, Red

### Product Classification

**Regional Availability**

Asia | Australia/New Zealand | EMEA | Latin America | North America

**Portfolio**

CommScope®

**Product Type**

Modular jack

**Product Series**

KJ Series

### General Specifications

**ANSI/TIA Category**

5e

**Cable Type**

Unshielded

**Color**

Red

**Conductor Type**

Solid | Stranded

**Integrated Dust Cover Type**

None

**Mounting**

Hubbell® faceplates | Leviton® faceplates | Panduit® faceplates

**Mounting Note**

Color matches with KJ-style Red Faceplates

**Outlet Type**

Keystone

**Termination Tool**

110 Punchdown tool | SL Termination tool

**Termination Type**

IDC

**Transmission Standards**

ANSI/TIA-568-C.2 | ISO/IEC 11801 Class D

**Wiring**

T568A | T568B

### Dimensions

**Panel Cutout, recommended**

14.79 x 19.31 mm (0.58 x 0.76 in)

**Panel Thickness, recommended**

1.6 mm | 0.063 in

**Height**

16.13 mm | 0.635 in

**Width**

16.48 mm | 0.649 in

**Depth**

30.48 mm | 1.2 in

# 2291217-RD

---

<b>Compatible Insulated Conductor Diameter, maximum</b>	1.27 mm   0.05 in
<b>Contact Plating Thickness</b>	1.27 µm
<b>Compatible Conductor Gauge, solid</b>	24–22 AWG
<b>Compatible Conductor Gauge, stranded</b>	26–24 AWG

## Electrical Specifications

<b>Remote Powering</b>	Fully supports the safe delivery of power over LAN cabling described by IEEE 802.3bt (Type 4) and complies with the unmating under electrical load requirements prescribed by IEC 60512-99-002
<b>PoE Durability</b>	Supports IEEE 802.3bt Type 4 (90 W) applications after 3000 plug to jack mating cycles

## Material Specifications

<b>Contact Base Material</b>	Beryllium copper
<b>Contact Plating Material</b>	Gold
<b>Material Type</b>	PC+ABS

## Mechanical Specifications

<b>Plug to Jack Mating Cycles</b>	Complies to IEC 60603-7 series
-----------------------------------	--------------------------------

## Environmental Specifications

<b>Flammability Rating</b>	UL 94 V-0
----------------------------	-----------

## Packaging and Weights

<b>Packaging quantity</b>	1
<b>Packaging Type</b>	Bag

## Regulatory Compliance/Certifications

<b>Agency</b>	<b>Classification</b>
CHINA-ROHS	Below maximum concentration value
REACH-SVHC	Compliant as per SVHC revision on <a href="https://www.commscope.com/ProductCompliance">www.commscope.com/ProductCompliance</a>
ROHS	Compliant
UK-ROHS	Compliant

