

Bridging the multi-gig Ethernet gap

Demand for multi-gigabit connections

Fueled by the introduction of technologies like Wi-Fi 6E, the number of connected multi-gigabit devices is surging. Many center on 2.5 and 5 Gbps applications.

The multi-gig donut hole

The 2.5G/5G “donut hole” is a challenge for enterprise network managers.

Can't ensure standard-based support with conventional Cat 5e or Cat 6 cabling

BUT

Not enough bandwidth demand to justify a complete upgrade to 10G-capable Cat 6A

What are your options?

OPTION #1:

Use existing Cat 6 according to NBASE-T Guidelines

NBASE-T Guidelines (2016) enable twisted-pair copper cabling to operate at 2.5 Gbps and 5 Gbps for distances of up to 100 meters, assuming the mitigation of any performance risks. Therein lies the problem.

At 2.5 GbE, the Cat 6 risk is low, and at 5 GbE it's medium. The risks for Cat 5e are even more severe.

Mitigation involves one or more steps:

Separating equipment cords	Setting equipment ports to “auto-negotiation” mode	Unbundling horizontal cabling	Using non-adjacent ports for higher speed

If mitigation fails then...

OPTION #2:

Rip out the Cat 6 cabling and replace with Cat 6A

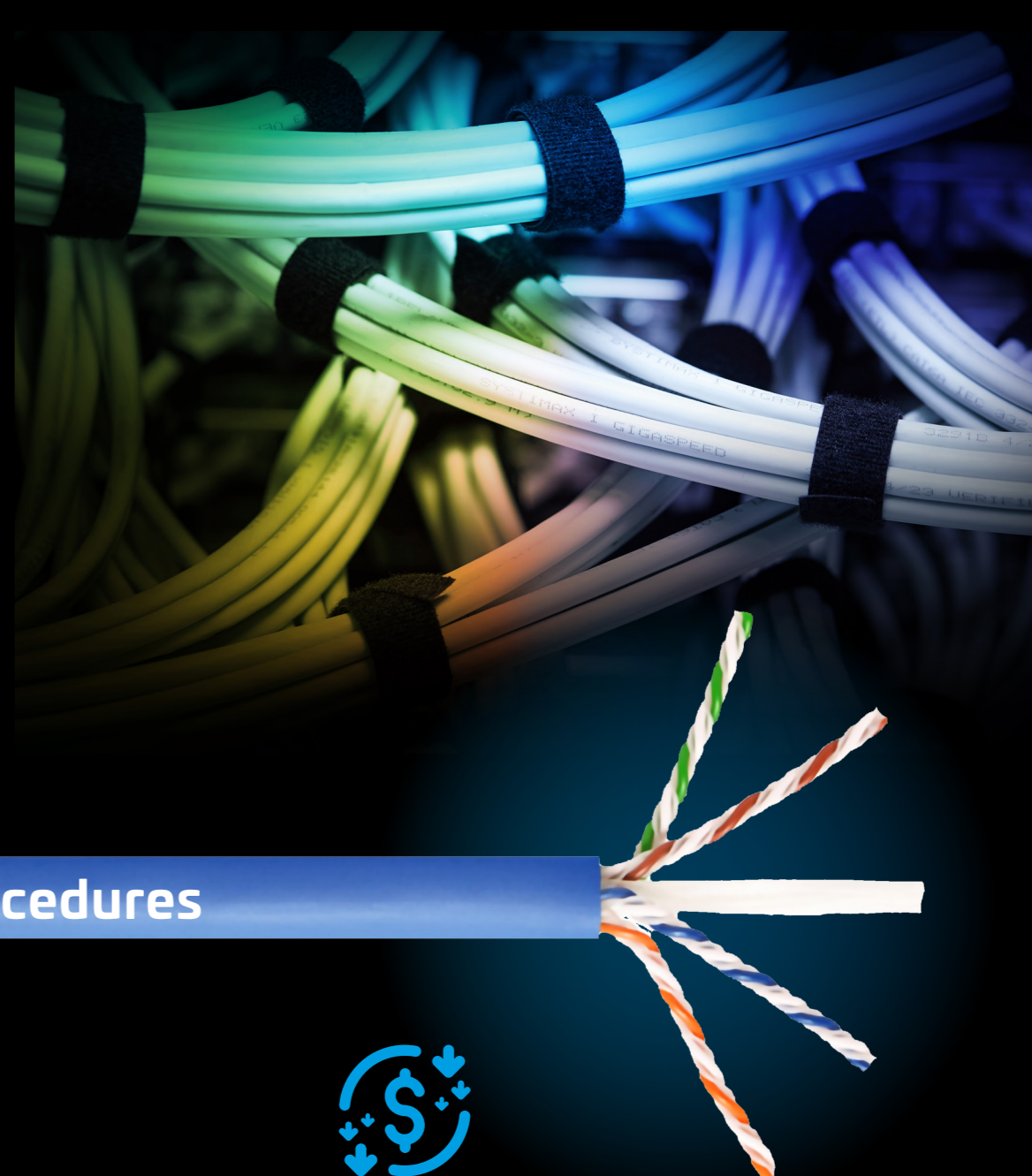
Significant network downtime	Highly disruptive to daily workflow	Costly and resource intensive	Difficult to justify if you're only using half the available bandwidth

...or think outside the category!

SYSTIMAX[®] GigaSPEED[®] XL5

A Cat 6 solution that supports 2.5 and 5 GbE up to 100 meters... no mitigation or upgrades required.

- Patented variable twist/strand technology greatly improves internal/alien crosstalk performance
- An end-to-end solution
- Supports up to 5 Gbps in a four-conductor 100 m channel with fully bundled horizontal cables
- Ideal for connecting devices like in-ceiling Wi-Fi 6E access points, IP security cameras and more



Use your existing XL installation tools and procedures

Cable diameter is nearly identical to GigaSPEED XL Cat 6 solution	Pack more bandwidth and performance in a compact footprint	Reduce your cost of installation, equipment and training

Perfect timing

The transition from Wi-Fi 6 to more bandwidth-heavy Wi-Fi 6E or Wi-Fi 7 has begun.

But applications requiring 2.5G and 5G support are growing.

	IP surveillance and security		Server-to-switch connectivity
	Video conferencing /collaboration		High-performance workstations
	Support Power over Ethernet (PoE)		Campus WLANs

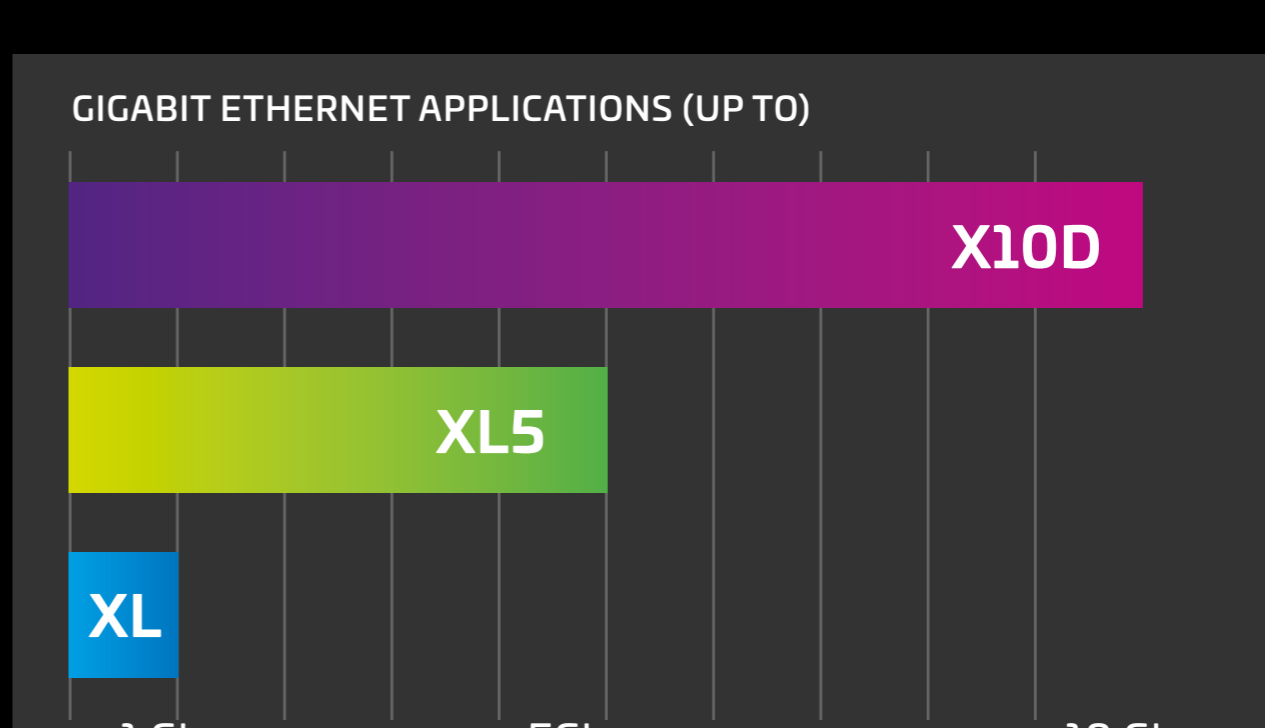
Bridge the gap

A solution that supports 2.5 and 5.0 GbE bandwidth demands without mitigation or upgrades.

The latest addition to the SYSTIMAX GigaSPEED family of copper solutions.

Seamlessly evolve as your bandwidth demands increase.

Available now as part of the new SYSTIMAX 2.0 portfolio.



GigaSPEED XL5: in a category all its own

Cat 5e	Cat 6	XL5	Cat 6A
Not dead yet... Don't even think about pushing it to high speed	Keeps running Expect at least “moderate” maintenance if/when pushed to higher speed	Brand new Built to work at higher speed. Comes with bumper-to-bumper dealer warranty	Assured to work at highest speeds Most future ready
HIGH RISK	MEDIUM RISK	ZERO RISK UP TO 5G	FUTURE READY

Contact your SYSTIMAX representative to find out more