

Pressure Window for WR90, 8.2–12.4 GHz, mates to PDR100

## Product Classification

**Product Type** Rectangular waveguide, pressure window

## Electrical Specifications

**Operating Frequency Band** 8.2 – 12.4 GHz

**VSWR** 1.04

## General Specifications

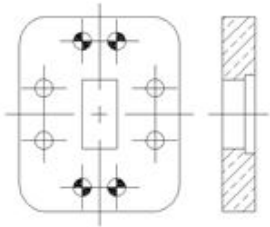
**Component** Pressure Window

**Waveguide Size** WR90 | WG16 | R100

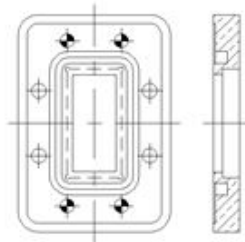
**Interface** UDR100

**Mates to Interface** PDR100

### Interface



### Mates to Interface



## Regulatory Compliance/Certifications

**Agency**  
ISO 9001:2015

**Classification**  
Designed, manufactured and/or distributed under this quality management system

